

Roosevelt Habitat Conservation Plan



Delivering more than power.™





Endangered Species Act

Flycatcher listed
as endangered

March 29, 1995

900–1100 pairs
known to exist

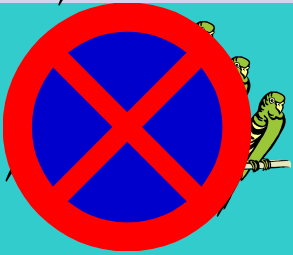


Theodore Roosevelt Dam

Safety of Dams
1,245,300 AF

Flood Control
557,000 AF

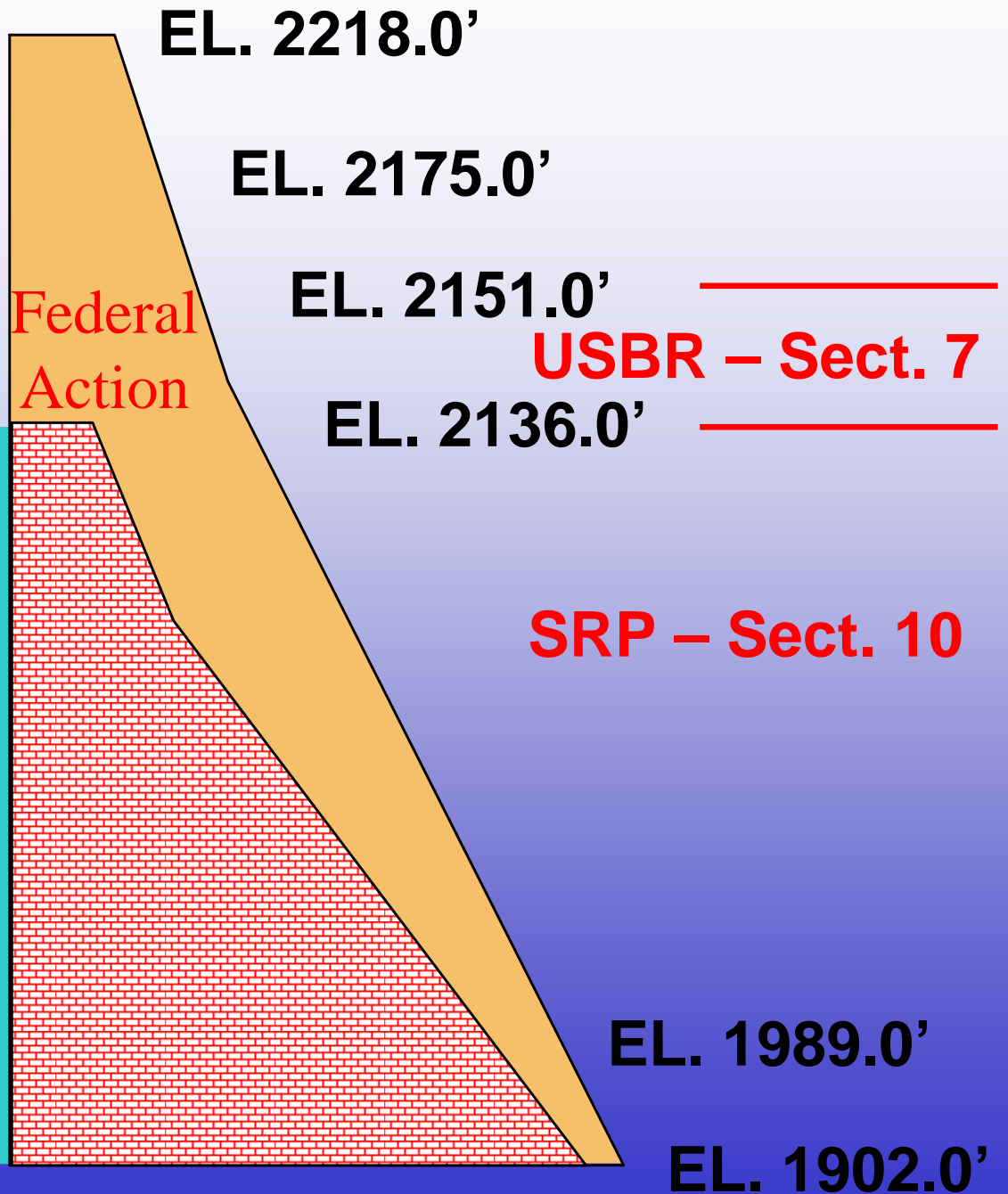
New Conservation Space
255,034 AF



Non-Federal
Action

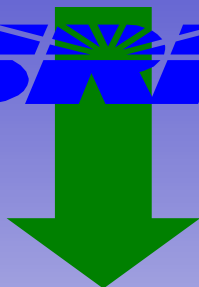
Salt River Project
Conservation Storage
1,336,700 AF

Dead Storage Capacity
17,400 AF



ESA

SECTION 10

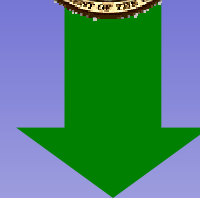


HCP

(Habitat Conservation Plan)



Demonstrate
Minimization &
Mitigation of Take



EIS

(Environmental Impact Statement)



Biological Opinion

An aerial photograph showing a winding river through a landscape. The river is surrounded by dense green vegetation, likely willows, and areas of brownish, possibly eroded soil. The background shows a flat, open landscape with sparse vegetation.

1994 – 55 birds

2001 – 263 birds

2004 – 375 birds

Threatened
Bald Eagle



Candidate
Yellow-billed
Cuckoo



Endangered

Yuma
Clapper Rail



Endangered

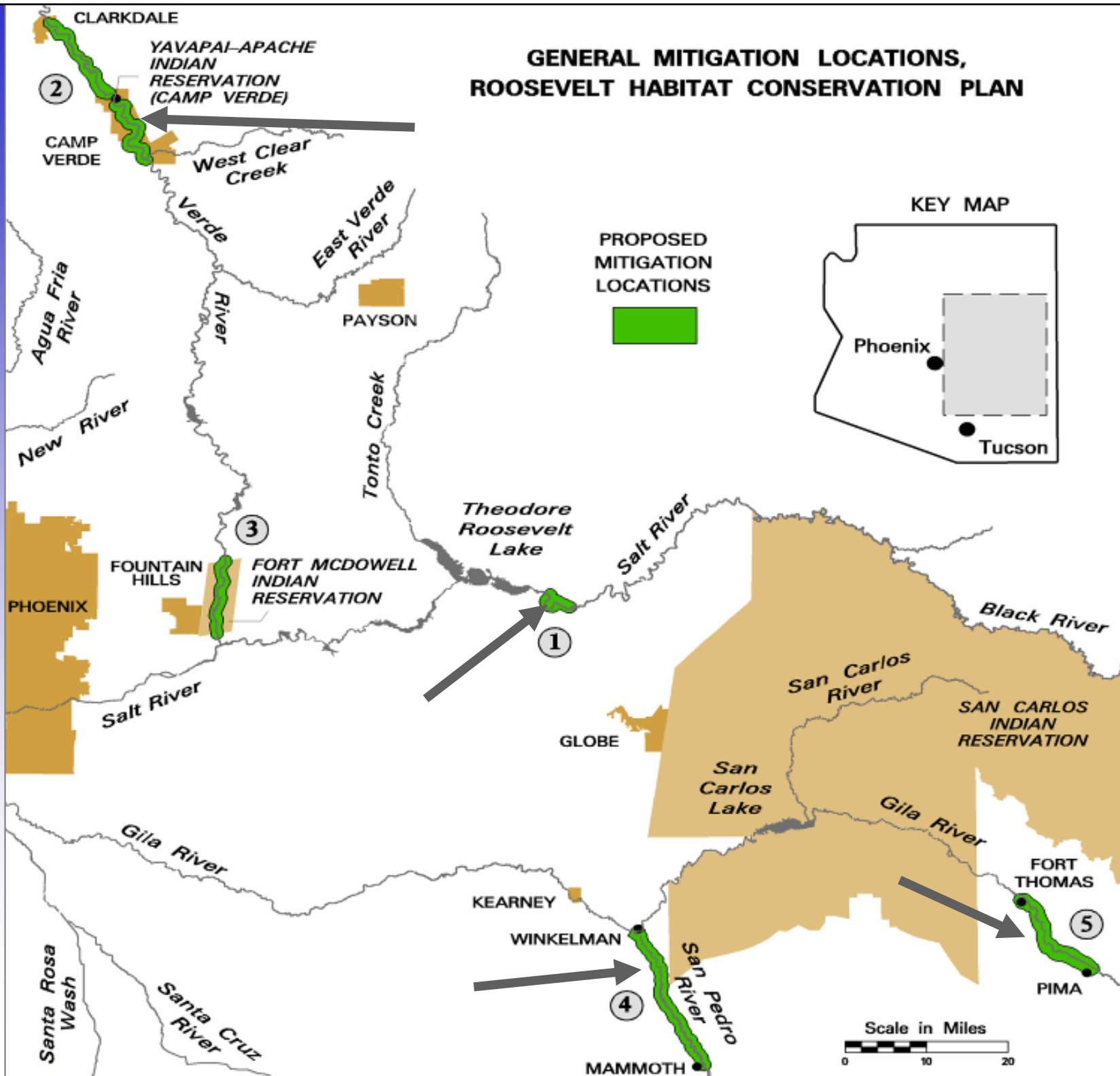
Willow Flycatcher



Major RHCP Commitments

- Acquire 2,250 acres
 - riparian habitat; buffer area
 - water rights (equivalency)
- Habitat management
 - Baseline Inventory
 - Management plan
 - Conservation easement
- Monitor bird populations and habitat
- Annual report to FWS & cooperators

GENERAL MITIGATION LOCATIONS, ROOSEVELT HABITAT CONSERVATION PLAN



Habitat Acquisition Status

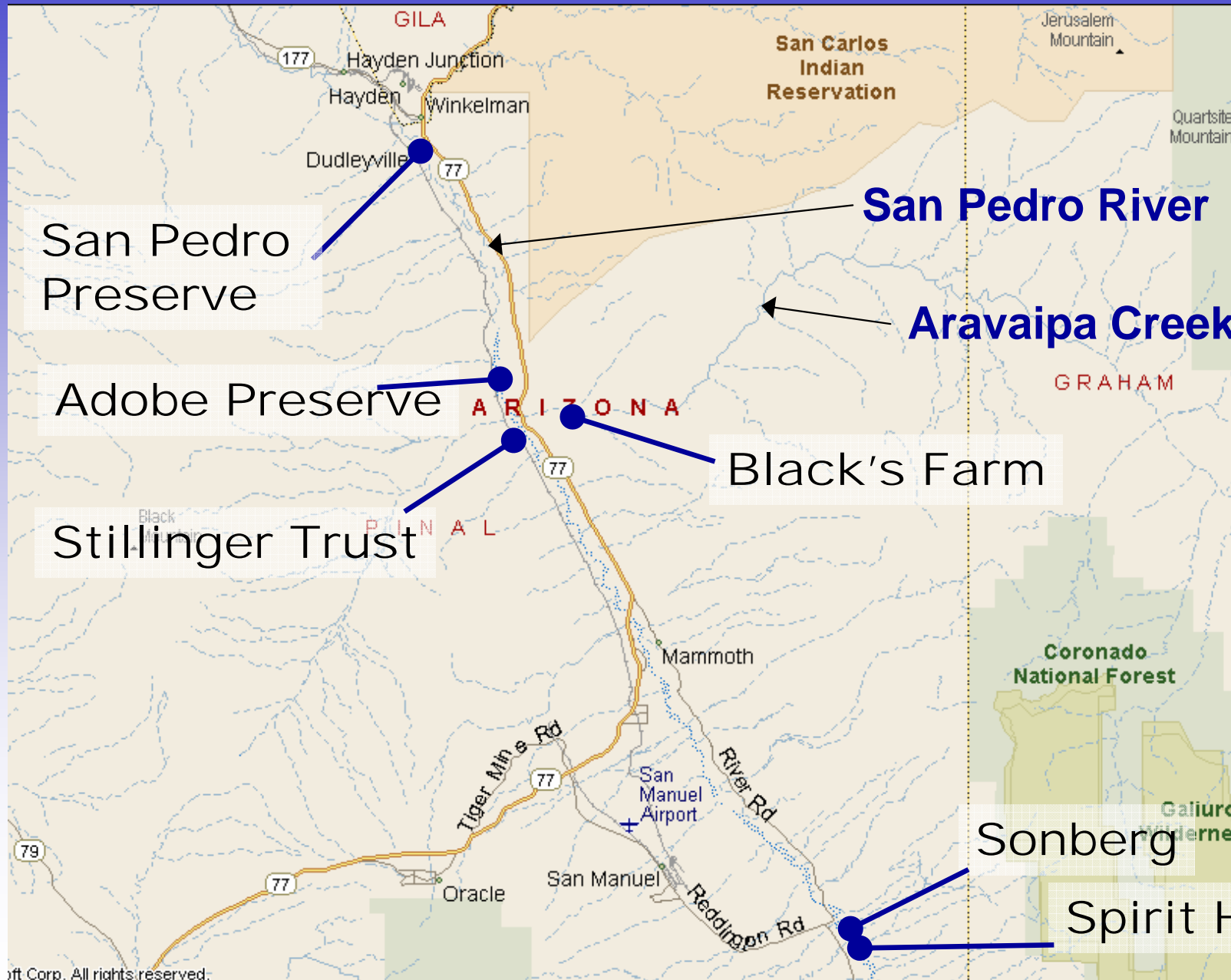
Habitat Requirement – 2250 Acres

		Mitigation	Other
<i>Phase 1</i>	<i>February 26, 2003</i>	500	250
<i>Phase 2</i>	<i>August 26, 2004</i>	500	250
<i>Phase 3</i>	<i>February 26, 2006</i>	500	250

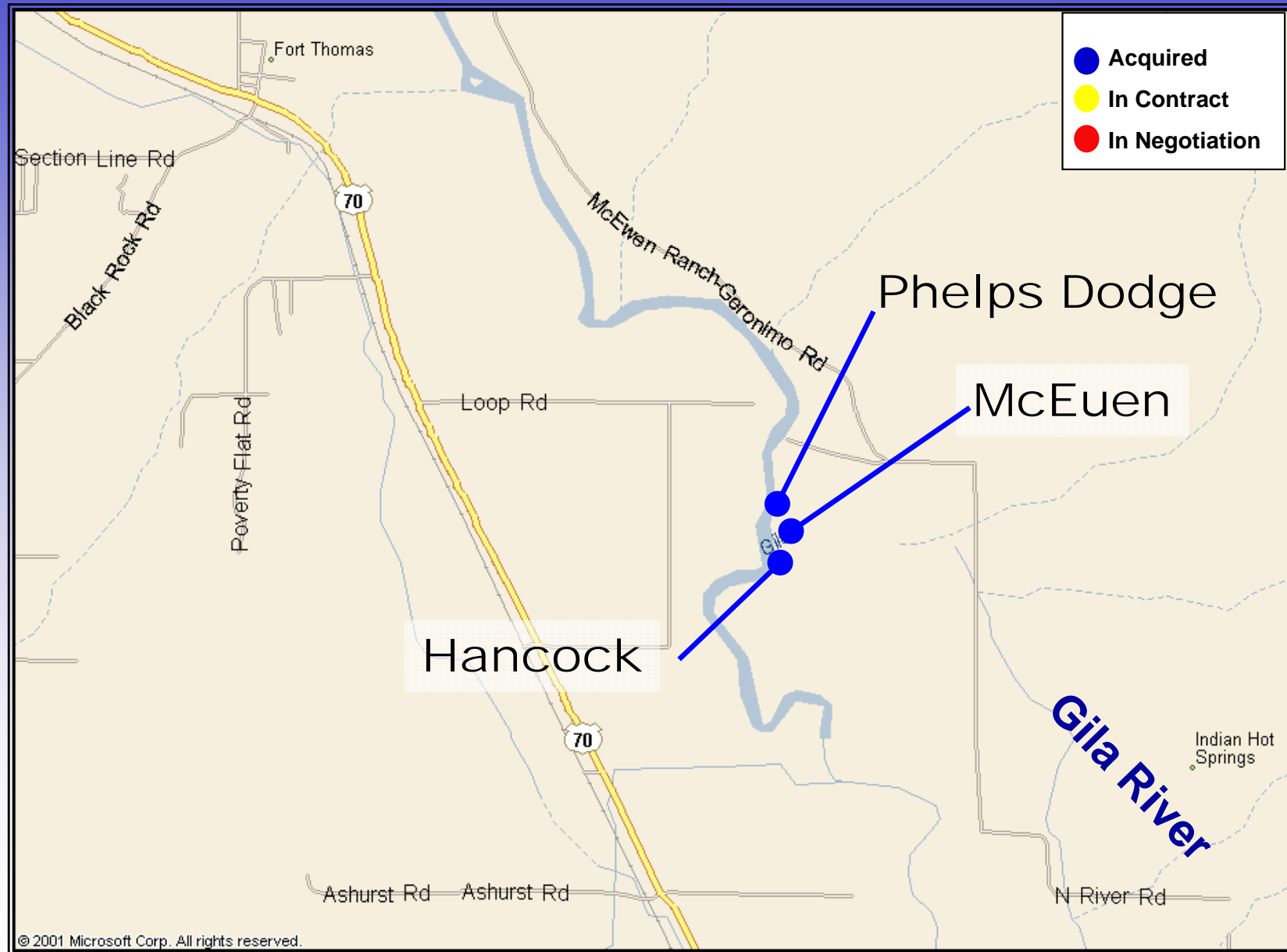
Phase 1 Requirement (complete)	500	250
Acquired Phase 1	487	362
Excess carryover to Phase 2	-13	+112
Phase 2 Requirement	500	250
Less carryover	+13	-112
Phase 2 Acquired	816	357
Estimated carryover to Phase 3	+51	+219
Phase 3 Requirement	500	250
Minus carryover	51	219
Total Acres Needed for Completion	197	31



Lower San Pedro



Gila River – Ft Thomas Area

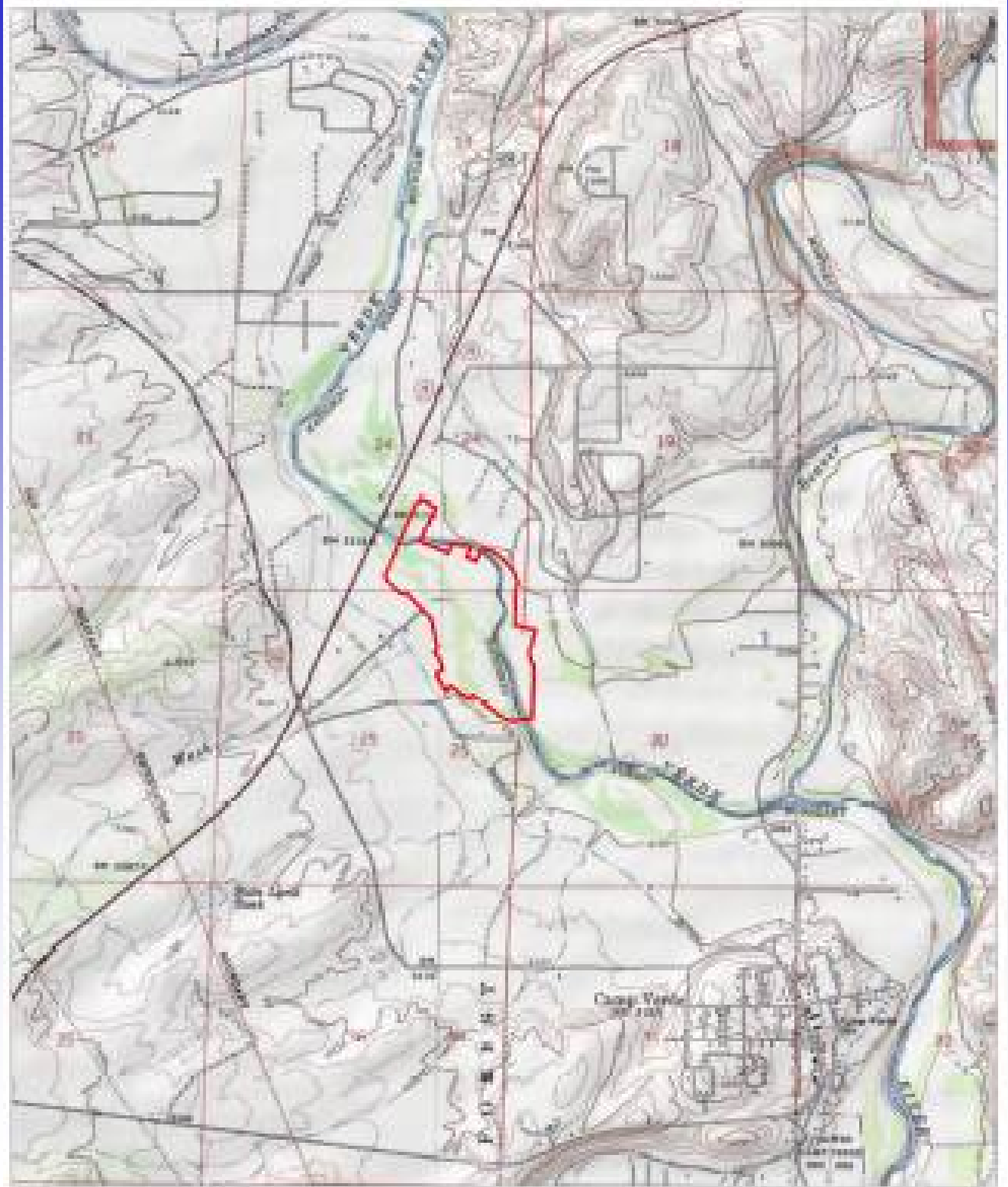


Camp Verde Riparian Preserve

Yavapai County
Township of Camp
Verde

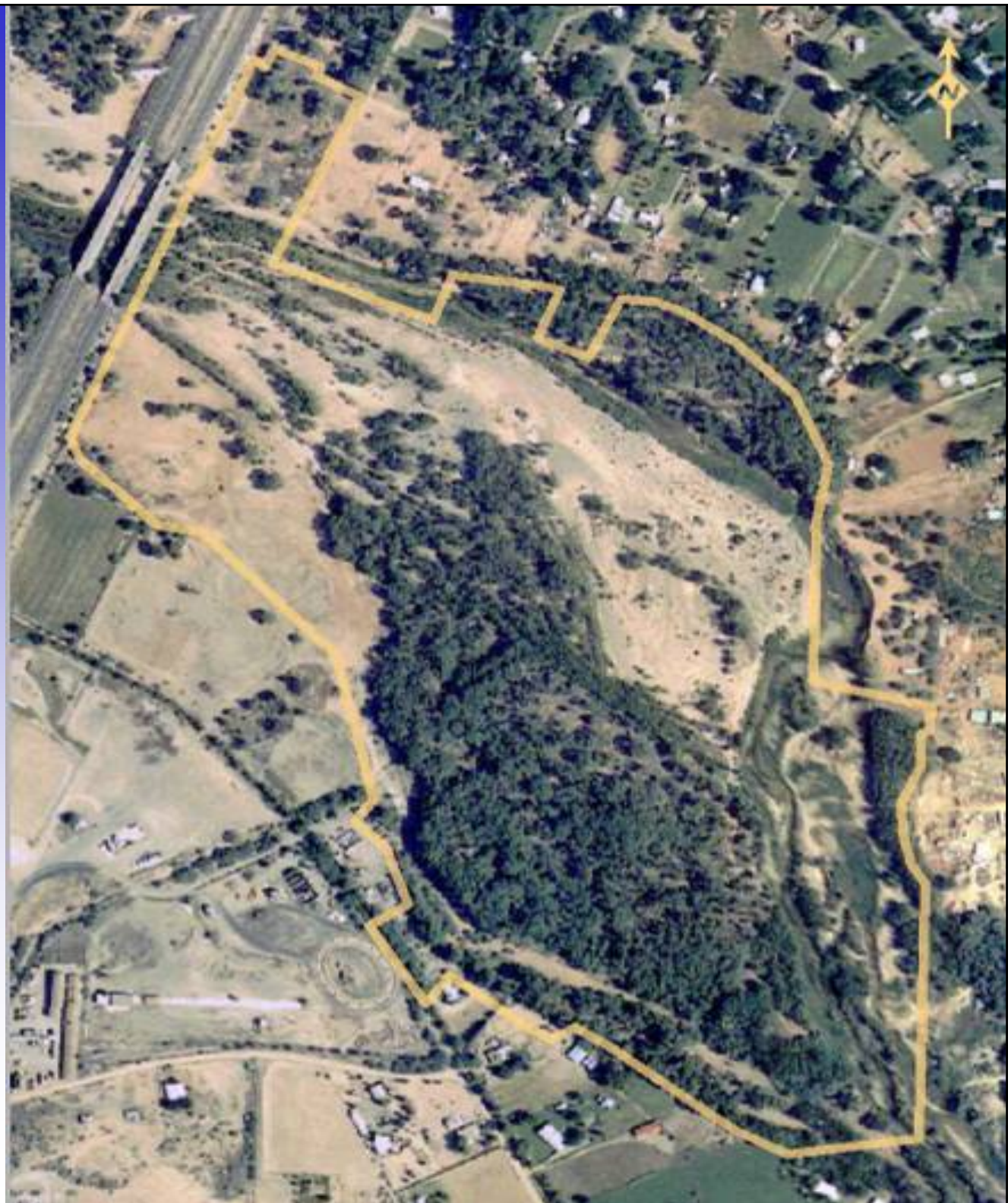
T14N, R4E

Sections 24 & 25



Camp Verde Riparian Preserve

COE	1/19/04
Total acreage	124 acres
Riparian	124 acres
Baseline Inv.	Drafted
Mgmt Plan	Drafted
Fire Plan	Not Started



Baseline Inventory

- Conservation Values (WIFL, YBC, Riparian)
- Geology/hydrology/geomorphology
- Soils
- Vegetation
- Wildlife
- Special Status Species/Invasive Species
- Cultural Resources
- Land Uses
- Property Infrastructure, Improvements
- Baseline Photo Documentation

Hydrology

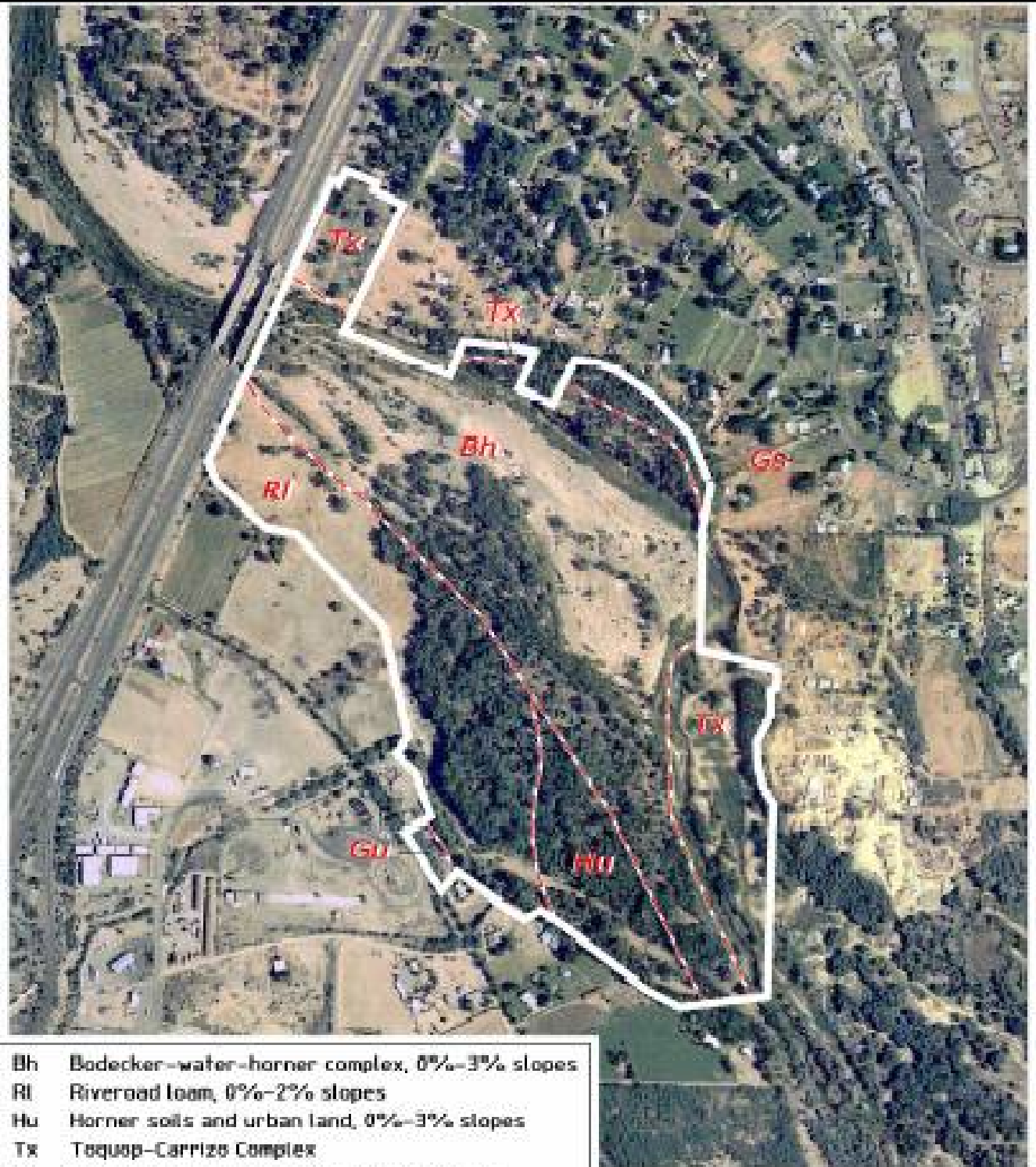
- stream gages
- water table

Geomorphology

- terraces

Soils

- erosivity
- revegetation



Bh	Bodecker-water-horner complex, 0%-3% slopes
Ri	Riverroad loam, 0%-2% slopes
Hu	Horner soils and urban land, 0%-3% slopes
Tx	Tequop-Carrizo Complex
Gc	Gila very fine sandy loam, reddish variant
Gu	Guest soils and urban land, 1%-5%

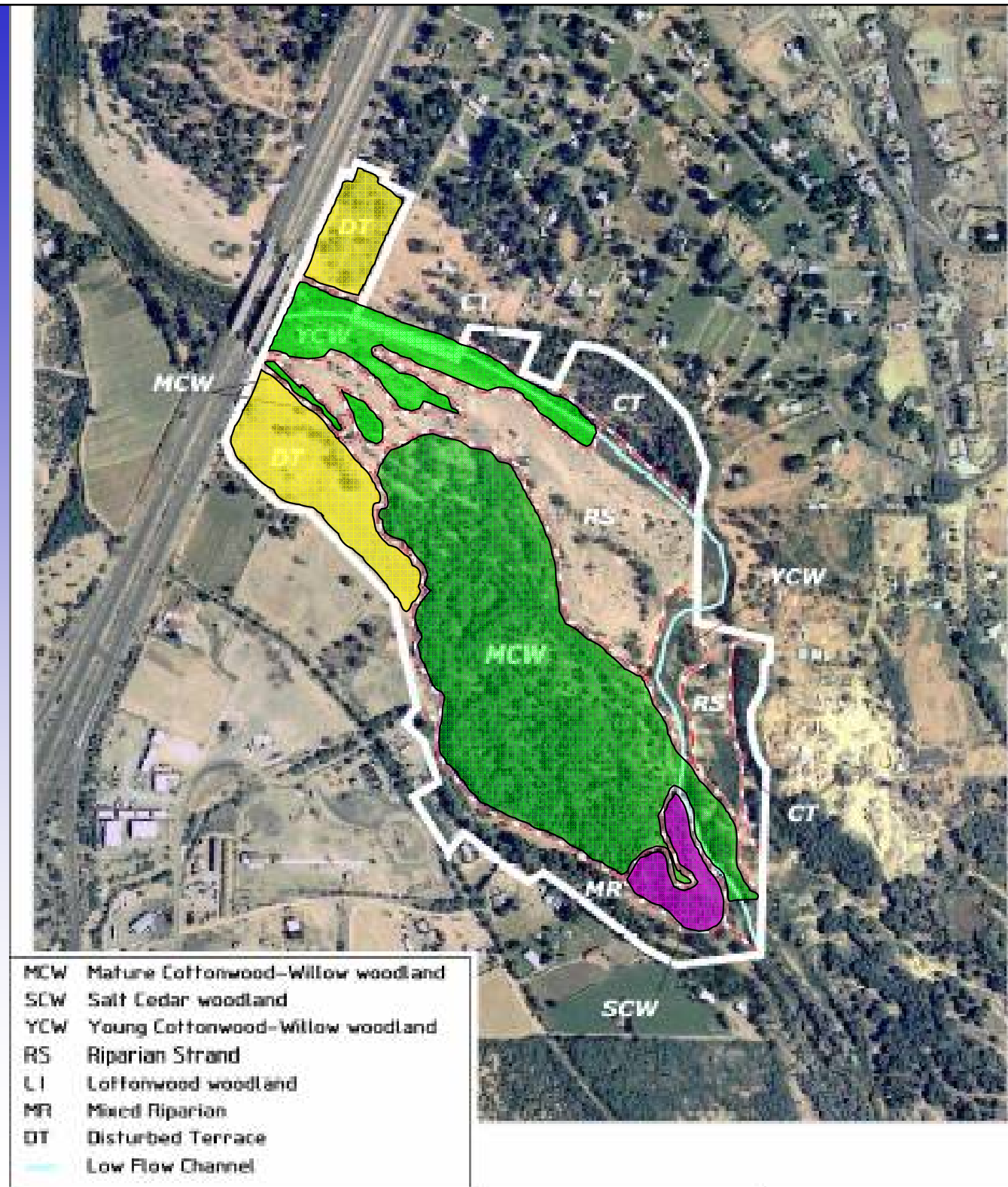


Vegetation

- descriptions
- invasives
- enhancement

Wildlife

- WIFL habitat





Mature Cottonwood Willow Gallery

Interior of Mature Cottonwood-Willow at Gaddis Wash





Young Cottonwood Willow



Salt cedar Thicket



Disturbed Terraces



High potential for introduction of
invasive or noxious plants

Previous WIFL Surveys: Phelps Dodge/SWCA (Verde Valley Ranch)

	1996	1997	1998
Adults	12	20	13
Territories	5	10	8
Nests	13	19	16
Nest Success	4 (33%)	10(52%)	4(25%)
Fledglings	9	21	4
Banded adults	7	12	2
Returned from '96		5(2F)	1
Returned from '97			7 (4F)
Cowbird Parasitism	6	3	2
% Parasitism	15	25	38

CV Female 1997; Kearney 1998; Roosevelt Lake 1999



Current Status - 2004 Monitoring Activities

Flycatchers: 1 territory, 1 pair, 3 adults (?)

Cuckoos: 5 detections during 3 visits (EEC)

Vegetation: Secured 2002 aerial photography

**Permanent photo points: To be established
after spring run-off**

Historic Impacts on Habitat

- Sand and gravel mining operations
- Residential development
- Stream diversions
- Road construction
- Recreation/off-road vehicles
- Drought
- Livestock grazing
- Other commercial and industrial activities
- Agricultural activity/irrigation
- Proliferation of noxious & invasive weeds

Future Threats

- Fire, catastrophic habitat loss
- Incompatible adjacent development
- Expansion of GW pumping/diversions
- Incompatible recreation
- Invasion of noxious/invasive species
- Vandalism/ human trespass



Off-road vehicle trails



Area excavated for sand and gravel



Remnants from sand and gravel operation – off property



Remnants from sand and gravel – on property



Incompatible recreation



Past livestock use on terrace lands



Adjacent Commercial/Industrial Activities

Management Objectives

- Minimize trespass, vandalism
- Reduce potential for wildfires
- Reduce cowbird parasitism
- Evaluate need for habitat enhancement
- Eliminate livestock grazing
- Reduce/prevent noxious, invasive weeds
- Construct/maintain fences, access roads
- Hire on-site manager
- Coordinate w/ community, neighbors
- Establish a conservation easement on property



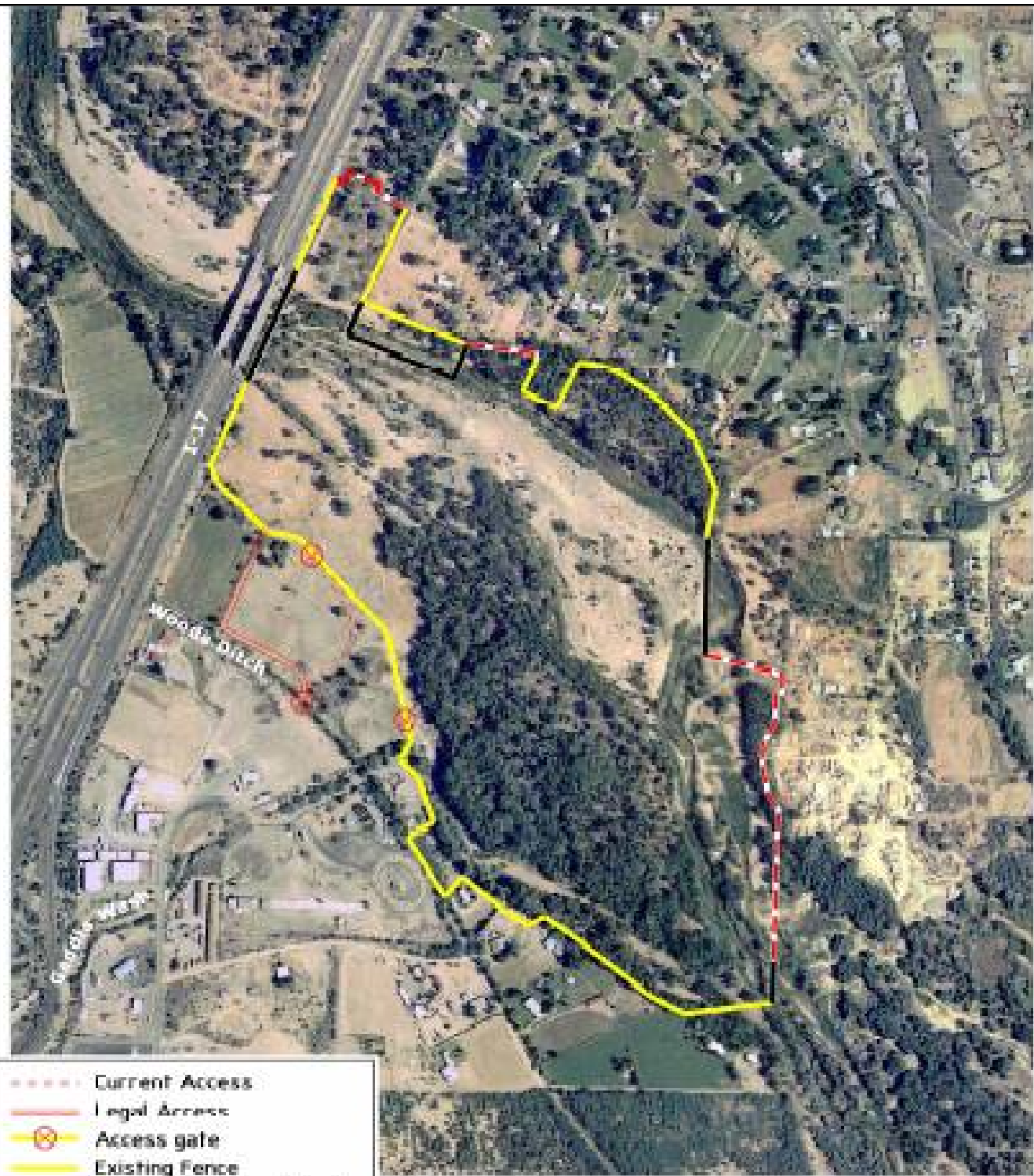
Access Issues – require
coordination with community





First Management Actions

- Fencing
- Boundary Issues
- Neighbor Coordination***
- On-Site Management



Annual Monitoring

- Flycatcher surveys
- Yellow-billed cuckoo surveys
- Permanent photo points
- Cowbird trapping

