



PHX
WATER
SMART

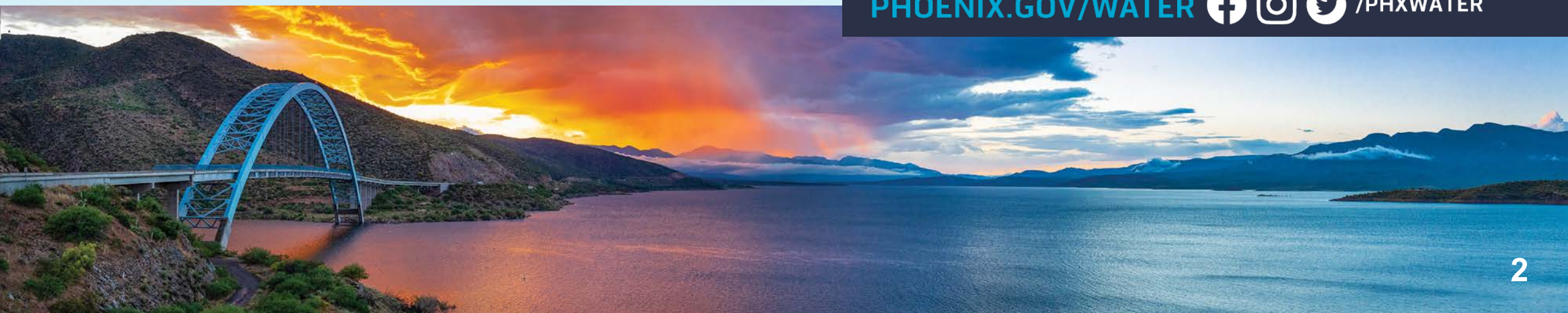
CITY OF PHOENIX ADVANCED PURIFIED WATER PLAN

July 12, 2023

WATER SYSTEM OVERVIEW

- Largest potable water provider in Arizona
- 5 water treatment plants
- 3 wastewater treatment plants
- Produce over 110 billion gallons/YR clean water
- 60 billion gallons/YR effluent put to beneficial use
- 7,000 miles of water mains (*540 sq mi*) – *Similar size of LA*
- 5,000 miles of sewer mains
- 1.7 million water customers
- 2.8 million wastewater customers (*Regional Facility*)

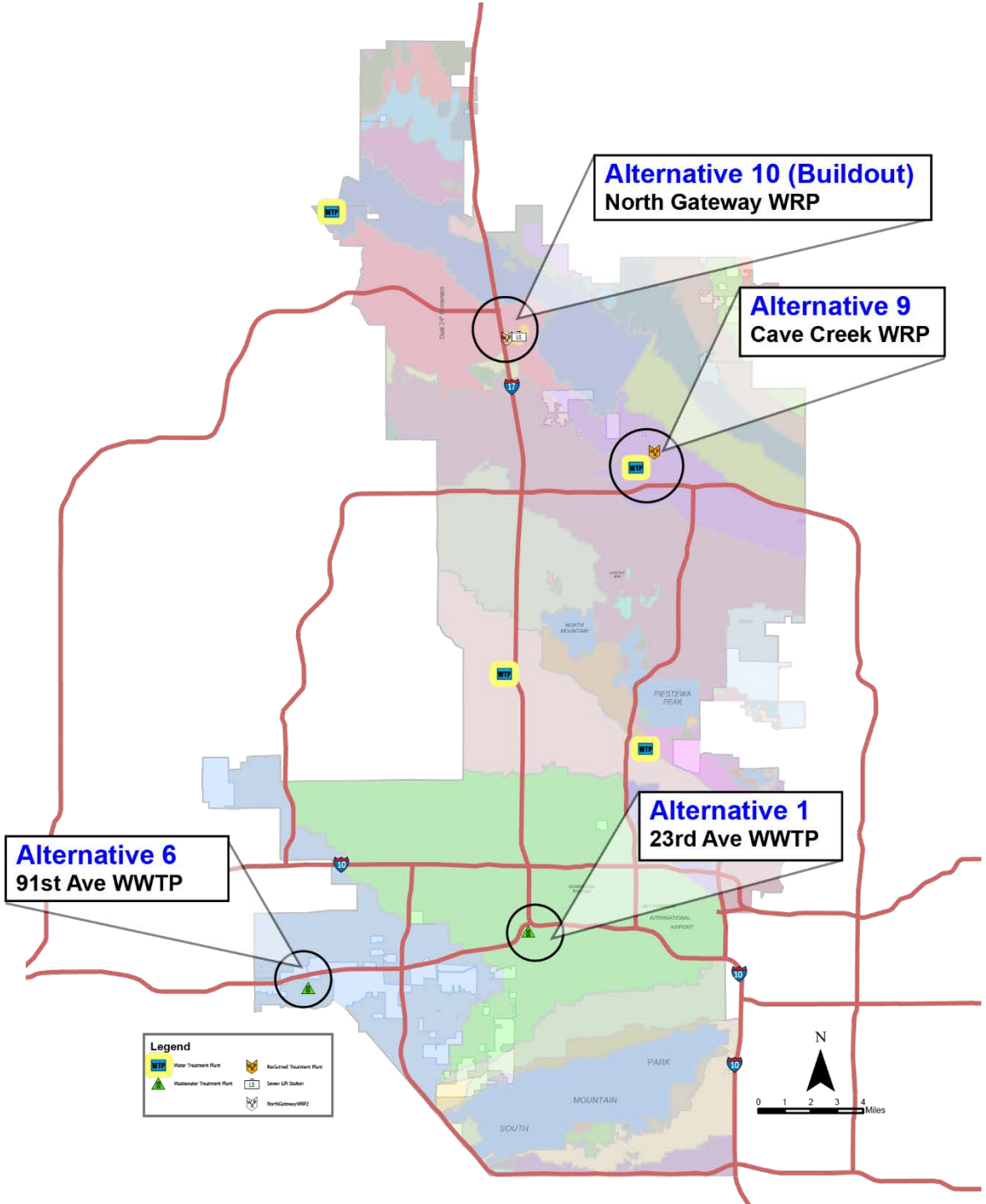
PHOENIX.GOV/WATER    /PHXWATER



02 Alternatives & Advanced Treatment Approaches for Potable Reuse

PREFERRED ALTERNATIVES

- *23rd Ave Wastewater Treatment Plant (WWTP)*
- *91st Ave WWTP*
- *Cave Creek Water Reclamation Plant (WRP)*
- *North Gateway WRP*



03

Cave Creek Alternative for Potable Reuse

CAVE CREEK WRP ALTERNATIVE

- Advanced Purified Water Facility to be located on the southeast side of the CCWRP site
- Purified water conveyed to the Union Hills WTP Raw or Finished Water
- Production Capacity
 - *Initial – 8 MGD*
 - *Build-out – 16 MGD*

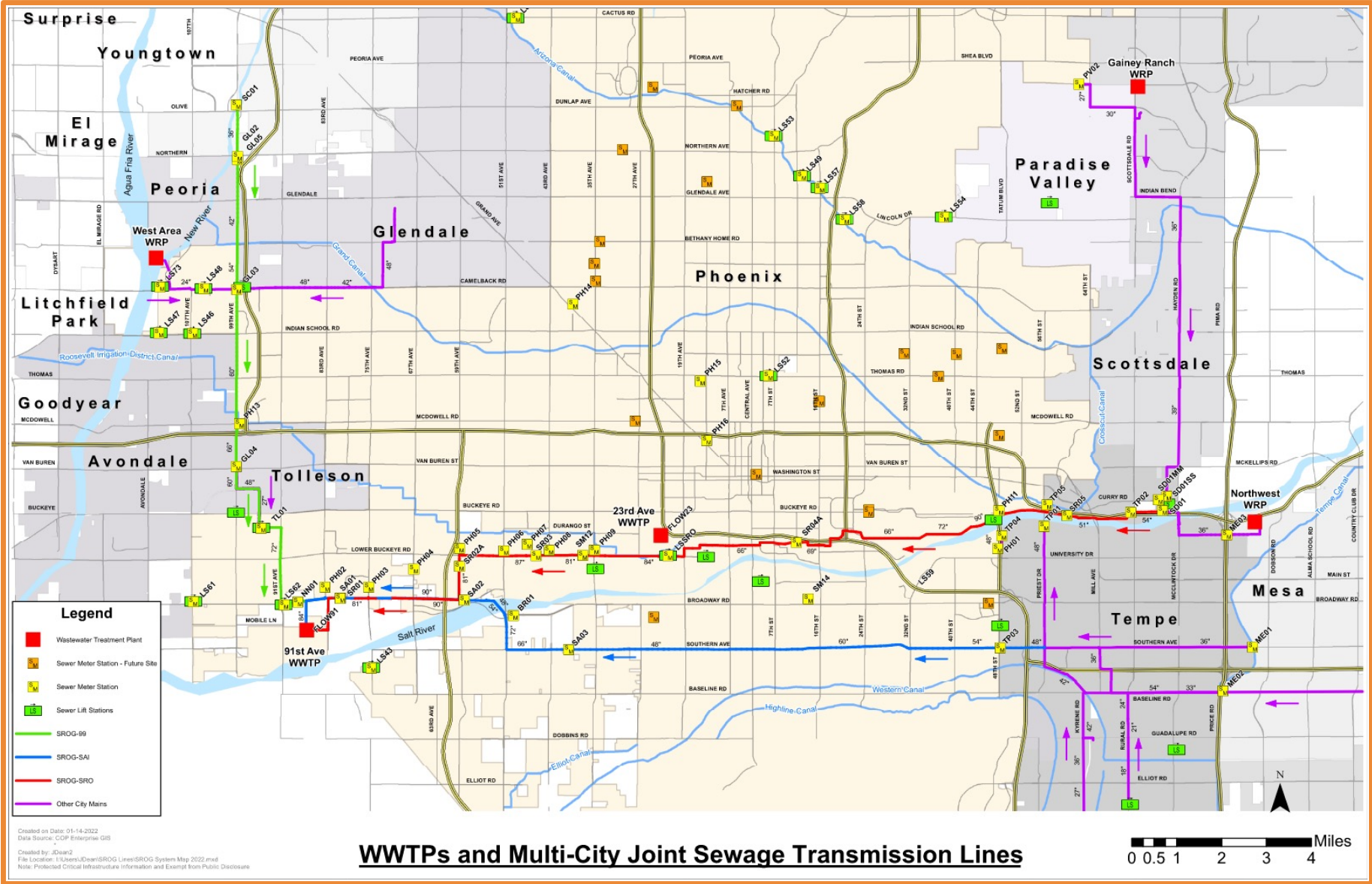


04

**91st Ave WWTP Alternative
for Potable Reuse**



SROG SYSTEM MAP



91ST AVE WWTP WATER AVAILABILITY MINUS BUCKEYE IRRIGATION COMPANY (BIC)

FLOW (mgd)	ACTUAL
------------	--------

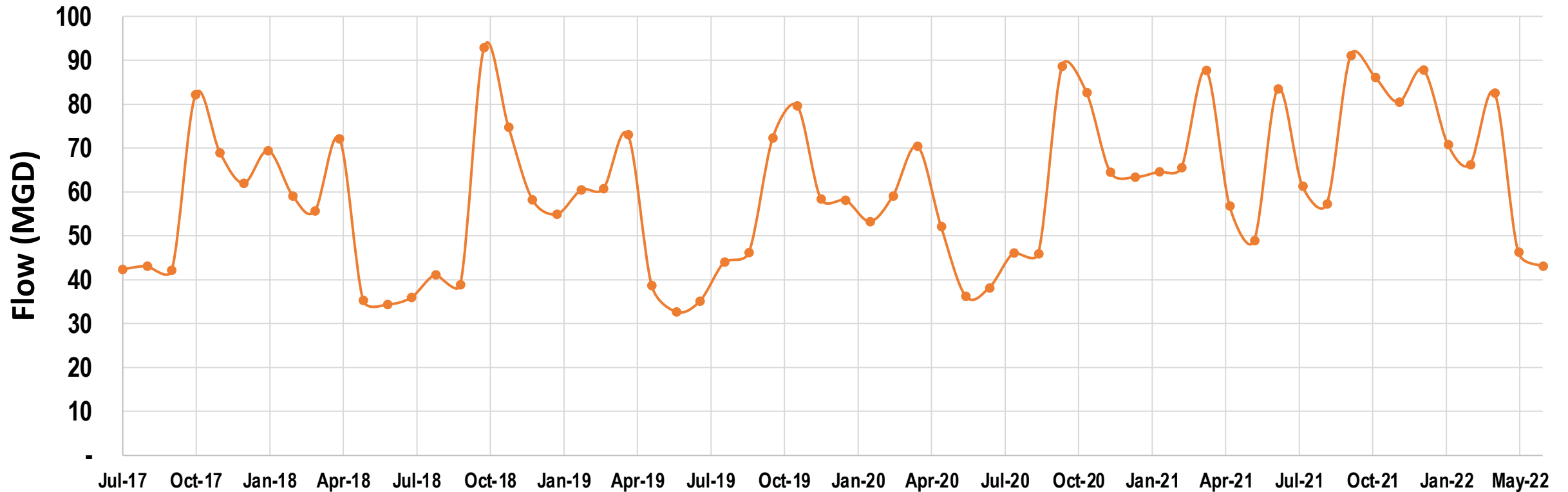
Min.	32.67
------	-------

Max.	92.90
------	-------

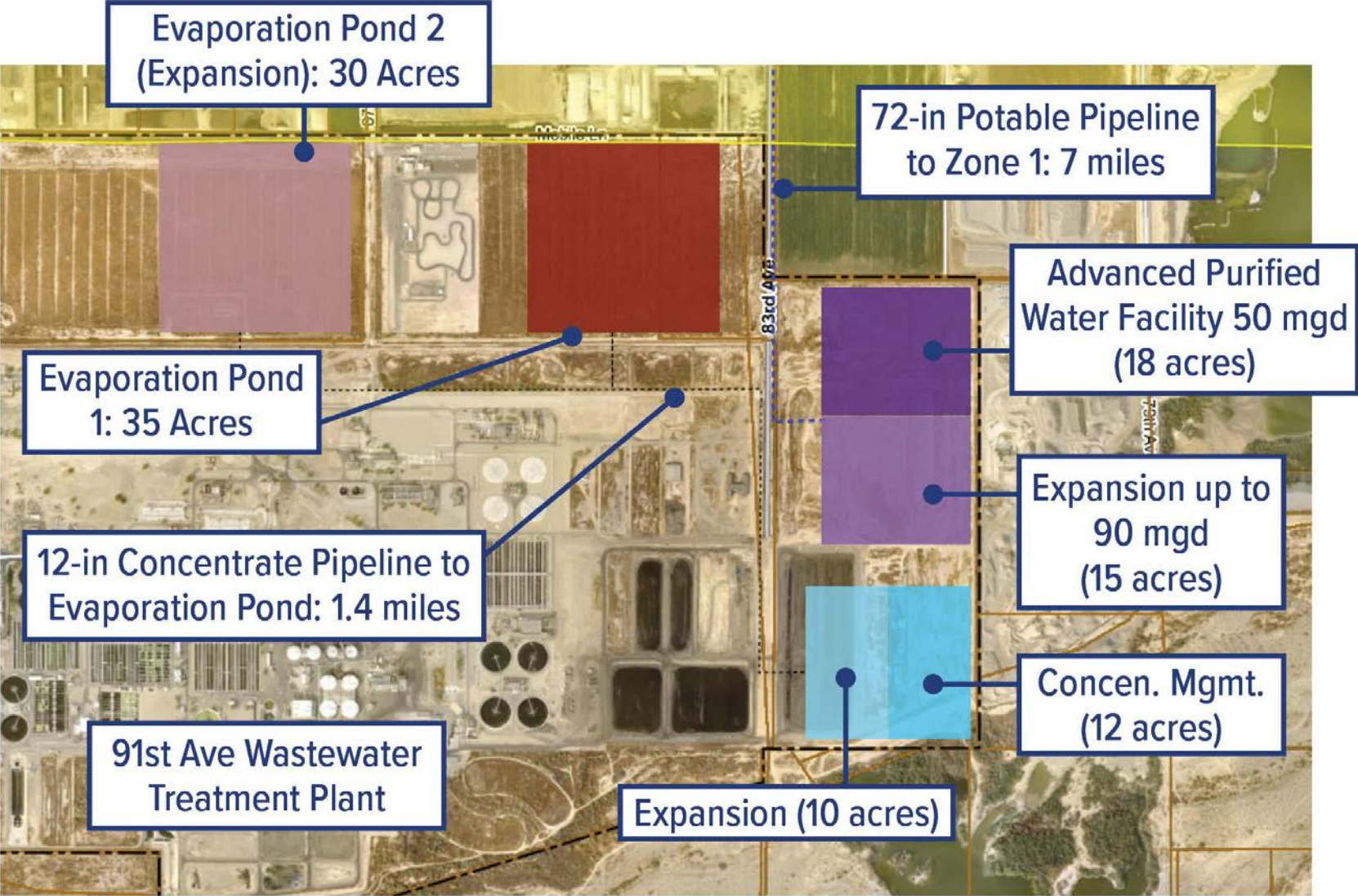
Avg.	60.15
------	-------

91st Ave WWTP Water Availability Minus BIC

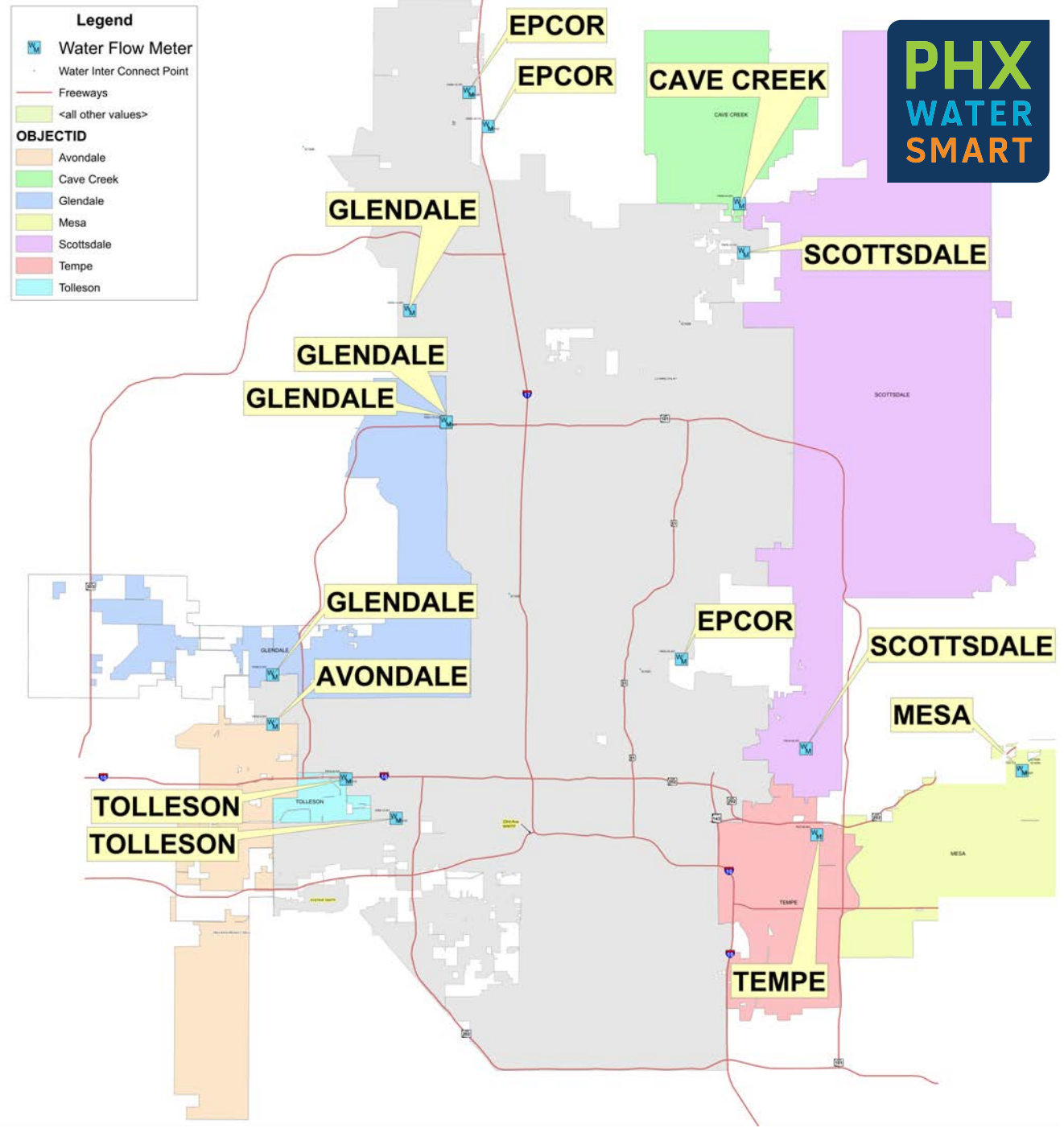
—●— 91st Ave WWTP Actual Minus BIC



Conceptual Site Layout



CITY OF PHOENIX INTERCONNECTS



05 Next Steps



PHX
WATER
SMART

Questions / Comments?