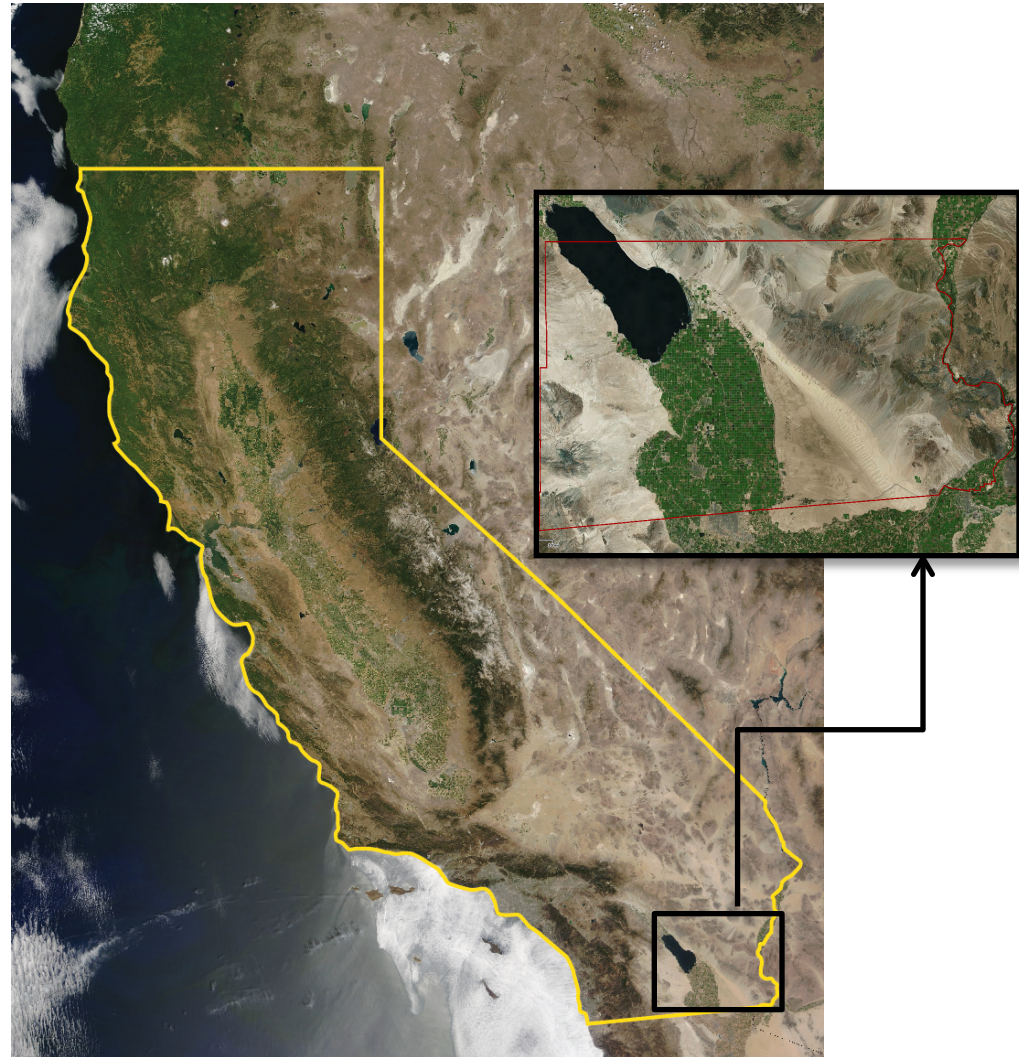


# WRRC -is following the answer to water sustainability?

*David Bradshaw,  
Asst. Water Manager  
Imperial Irrigation District*



# IID Following Program Purpose

- Fulfill the annual water transfer delivery schedule to the San Diego County Water Authority (SDCWA) and the Salton Sea mitigation delivery schedule associated with this transfer
- Manage IID's annual 3.1 million acre-foot Colorado River consumptive use cap
- Payback pervious years' overuse or inadvertent overruns of Colorado River water



---

# IID Farm Unit Fallowing Program

- Approved by Board of Directions March 25, 2014
- Farm Units are given a fallowing target based on its potentially eligible acreage
- Farm Unit Manager can voluntarily request more or less than target
  - *Guaranteed IID will accept at least the target volume, pending field verification*
- Payment rate: (\$175/AF as of March 2016)
  - *20% Farm Unit Manager/Tenant*
  - *80% Balance prorated to participating landowner (regardless of whether field is actually fallowed)*
  - *Owner/operator can receive 100% of payment rate*



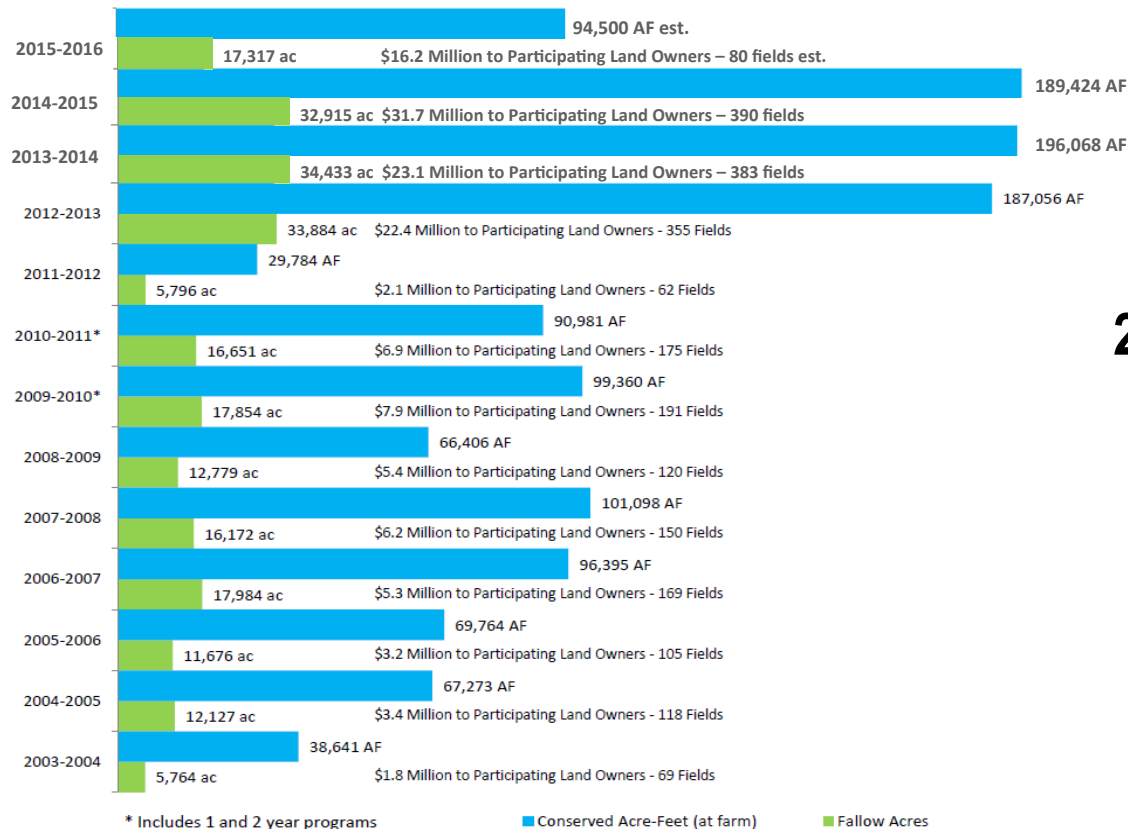
# IID Following Program Compliance & Verification

- TruePoint crop code revised to reflect FP participation, effectively eliminates ability to order water on FP fields
- Delivery gates locked (where possible) or physical block installed/verified for all FP fields
- Quarterly field inspections/photo verifications by IID staff
- Semi-annual field and date validation (5% of FP acreage) by USBR



# IID Fallowing Program Summary

*(provisional data, subject to change and true-up)*



**22 Fallowing Programs  
(12/1/03 – 6/30/16)**

*> \$140 million paid*

*> 265,000 fallowed acres*

*> 1.6 million acre-feet water conservation yield*



# IID

*A century of service.*

<http://www.iid.com/index.aspx?page=190>

www.iid.com

# IID Following Programs, Local Entity

| 2012                              |    |    |    | 2013                              |    |    |    | 2014                              |    |    |    | 2015                              |    |    |    | 2016                              |    |    |    | 2017                              |    |    |    |
|-----------------------------------|----|----|----|-----------------------------------|----|----|----|-----------------------------------|----|----|----|-----------------------------------|----|----|----|-----------------------------------|----|----|----|-----------------------------------|----|----|----|
| Q1                                | Q2 | Q3 | Q4 | Q1                                | Q2 | Q3 | Q4 | Q1                                | Q2 | Q3 | Q4 | Q1                                | Q2 | Q3 | Q4 | Q1                                | Q2 | Q3 | Q4 | Q1                                | Q2 | Q3 | Q4 |
| 2011-2012 FP                      |    |    |    | 2012-2013 FP                      |    |    |    | 2013-2014 FP                      |    |    |    | 2014-2015 FP                      |    |    |    | 2015-2016 FP                      |    |    |    | 2016-2017 FP                      |    |    |    |
| 2012-2013 WFL FP                  |    |    |    | 2013-2014 WFL FP                  |    |    |    |                                   |    |    |    |                                   |    |    |    |                                   |    |    |    |                                   |    |    |    |
| 2012 Temporary Land Conversion FP |    |    |    | 2013 Temporary Land Conversion FP |    |    |    | 2014 Temporary Land Conversion FP |    |    |    | 2015 Temporary Land conversion FP |    |    |    | 2016 Temporary Land Conversion FP |    |    |    | 2017 Temporary Land Conversion FP |    |    |    |
|                                   |    |    |    | 2013 CY WFL FP                    |    |    |    | 2014 CY WFL FP                    |    |    |    |                                   |    |    |    |                                   |    |    |    |                                   |    |    |    |
|                                   |    |    |    | 2013 CY FP                        |    |    |    | 2014 CY FP                        |    |    |    |                                   |    |    |    |                                   |    |    |    |                                   |    |    |    |
|                                   |    |    |    | 2012-2013 (9 Month) FP            |    |    |    |                                   |    |    |    |                                   |    |    |    |                                   |    |    |    |                                   |    |    |    |

- \$50 million was made available to mitigate the direct and indirect impacts of following, with \$30 million provided by SDCWA and \$20 million by IID.
- disbursed over \$19 million in mitigation funding to farm service providers whose businesses were affected by fields contracted for following by
- final round of \$12.3 million of mitigation funding for the 2014-2017 following period.
- IID has also funded nearly \$11 million to community business endeavors to support the creation and retention of local jobs.



# IID Fallowing Programs Combined Summary

Dec 1, 2003 – Dec 31, 2016 (provisional)

- \$161 million (paid to participants)
- 296,140 total fallowed acres
- 1,612,442 acre-feet water yield (in-valley)
- 1,737,252 acre-feet water yield (at-river)

More Fallowing Program Details

<http://www.iid.com/water/water-conservation/fallowing>

