

Cochise County: Agriculture and Water Resource Implications

Rod Keeling

Past President, Arizona Wine Growers Association; Owner, Keeling Schaefer Vineyards



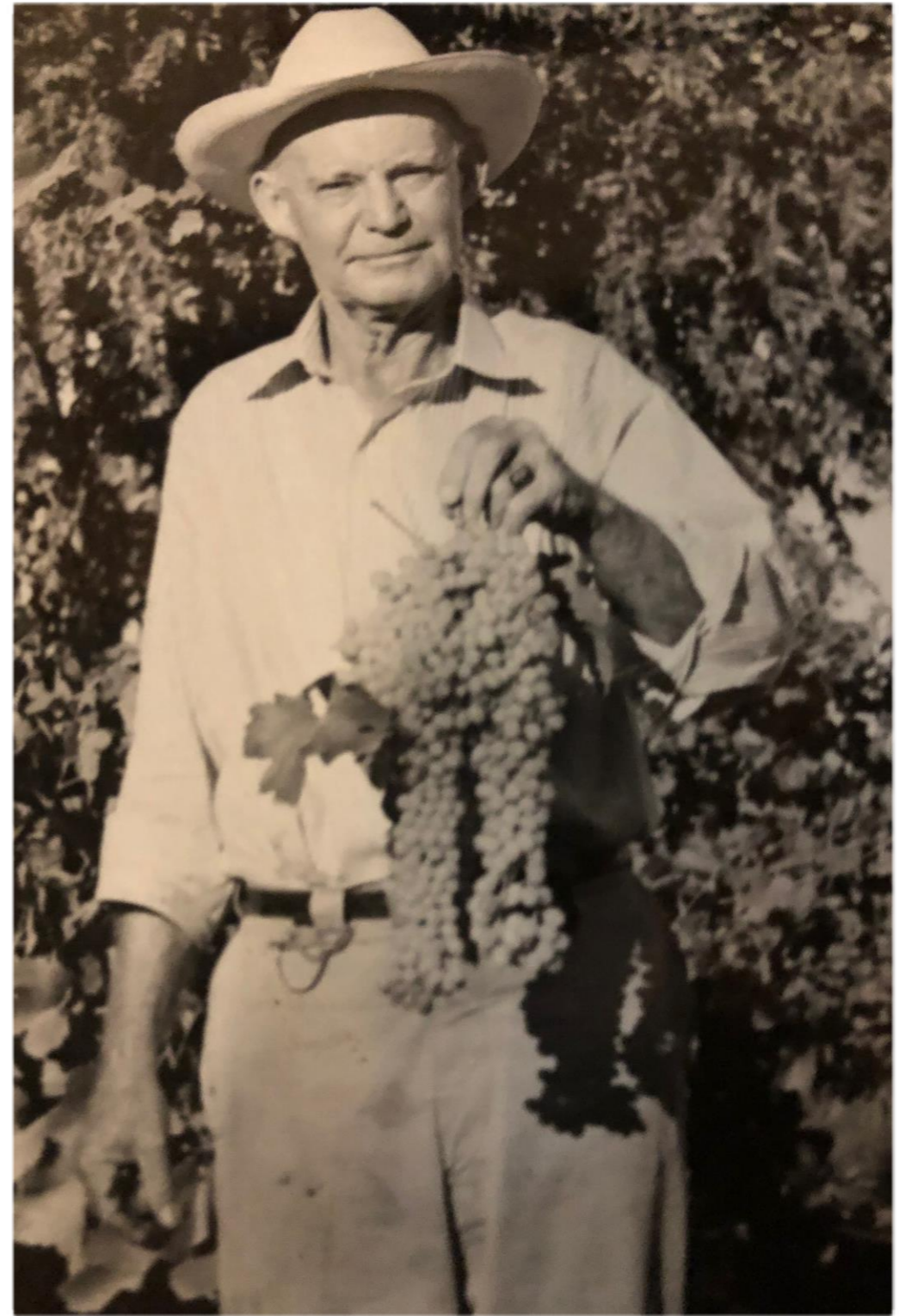
Agriculture Uses 72%

Willcox Basin 2019

- 60,000 Irrigated Acres
- Forage, Grains, Nut and Fruit Trees, Cotton, Wine Grapes
- Ground Water Only
- Closed Basin In NE Cochise and SE Graham Counties
- 200,000 A/F Water Pumped
- 40,000 A/F Natural Recharge
- 5/1 Overdraft of the Aquifer



Low Value/High Water Use VS High Value/Low Water Use



Arizona Cotton

- State Industry
- 200,000 acres
- 150,000 Tons
- \$362 million
- 700,000 A/F
Water

- Montgomery
Farms, Casa
Grande
- 20 Acres
- 15 tons
- \$25,500
- 70 A/F Water

Arizona Wine Grapes

- State Industry
 - 1650 Acres, 74%
in Willcox Basin
 - 3800 Tons
 - \$33,250,000
 - 1500 A/F Water
- Keeling Schaefer
Vineyards
 - 20 Acres
 - 85 Tons
 - \$337,500
 - 11.6 A/F Water

Cotton VS Wine Grapes

- Montgomery Farms, Casa Grande
- 20 Acres
- 15 tons
- \$25,500
- 70 A/F Water

- Keeling Schaefer Vineyards
- 20 Acres
- 85 Tons
- \$337,500
- 11.6 A/F Water

How can the Wine Industry Grow?

- Arizonans Purchase and Consume Over \$1.5 Billion in Wine
- Arizona is One of the Highest Per-Capita Wine States
- Arizona Wine Has Been Recognized for its High Quality
- Arizona Wine is a Significant Driver of Rural Economic Development
- Arizona Wine is 1/2% of the State Wine Market
- Most Arizonans are unfamiliar with Arizona Wine

- Change Current AZ Liquor Laws that Limit the Scale of Farm Wineries
- Create an Effective Industry Promotional Council
- Improve In-State Viticultural and Enology Knowledge
- Develop Industry Supply and Service Infrastructure
- Better Partnerships

**2019 Arizona
Wine Commission
Reinstatement Bill
HB 2010**

**Save Water,
Drink Arizona
Wine!**

