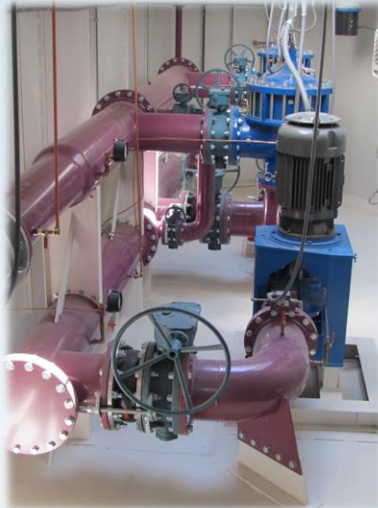


The logo for the Water Infrastructure Finance Authority of Arizona (WIFA) features the acronym "WIFA" in a bold, black, sans-serif font. The text is centered within a white rectangular box that is partially obscured by a blue, irregular, splash-like shape.

## Tools/Funding Opportunities



## Topics to Cover

### Tools and Funding Opportunities:

- ◆ Water Infrastructure Finance Authority of Arizona (WIFA)
- ◆ Rural Water Infrastructure Committee (RWIC)
- ◆ Greater Arizona Development Authority (GADA)



## Water Infrastructure Finance Authority

- ◆ Independent state agency
- ◆ Manages Arizona's water and wastewater State Revolving Funds



*Maintain and improve water quality in Arizona by providing financial and technical assistance for basic water infrastructure.*

WIFA

## Water Infrastructure Finance Authority

- ◆ Provide **loans and grants** for drinking water and wastewater infrastructure throughout Arizona
  - ◆ Loans: planning, design, improvement, construction, acquisition
  - ◆ Grants: planning and design phases
- ◆ **\$2 billion** of investment in AZ's communities since 1992
  - ◆ 400 projects
  - ◆ Steer resources to communities with the greatest needs



Wastewater



Drinking Water

WIFA

## What WIFA Can Fund



## What WIFA Cannot Fund

- ◆ Projects primarily intended to serve **future growth** (DW)
- ◆ Projects needed mainly for **fire protection**
- ◆ **Operation and maintenance** costs
- ◆ **Refinancing** debt obligations of **privately-owned** systems
- ◆ **Water rights, except** if the water rights are owned by a system that is being **purchased through consolidation** (DW)
- ◆ Projects for systems in **significant non compliance** unless funding will ensure compliance

# Who Can Apply

## Wastewater/Stormwater

- ◆ Cities, towns, tribal entities and special districts that own a wastewater facility
- ◆ Cities, towns, tribal entities and special districts that manage stormwater (permitted MS4s and unpermitted) *Municipal Separate Storm Sewer Systems (MS4s)*

## Drinking Water

- ◆ Cities, towns, tribal entities and special districts that own a community water system
- ◆ ACC-regulated private entities that own a community water system

**County, state and federal entities are NOT eligible for WIFA funding.**

*Pima County Exception*



# Quick and Easy Application Process

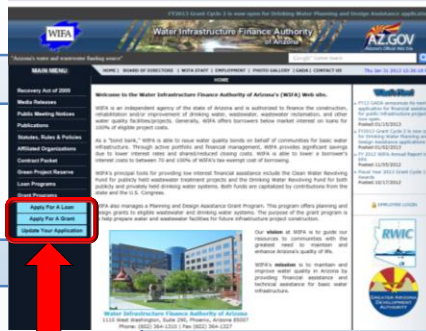
1. Brief e-application – Project Priority List

2. Debt authorization

**Public entities** require approval of governing body or bond election

**Private water companies** require ACC financing approval

3. Project Finance Application



www.azwifa.gov



## What Makes WIFA a Good Financing Option

- ◆ Low-interest financial assistance
  - ◆ Average for most recent years under 3% for 20-year term (for public entities)
- ◆ No application fees or closing costs



Water Reclamation Facility  
City of Casa Grande

WIFA

## What Makes WIFA a Good Financing Option

- ◆ Financing available year-round
  - ◆ No application deadlines
  - ◆ Loans approved at bimonthly board meetings

Go from completing an online application to closing on your loan in just a few months!



WIFA

## What Makes WIFA a Good Financing Option

- ◆ No minimum or maximum loan amount

- ◆ Smallest loan amount: \$2,968
- ◆ Largest loan amount: \$87.7 M
- ◆ Largest multi-loan project: \$346 M

WIFA is an excellent source of funding for Arizona's larger cities and towns as well as small rural areas.



Converting city from septic to sewer  
Lake Havasu City



## Special WIFA Incentives

- ◆ 1% interest rate 3-year design-only loans
- ◆ Discounts for disadvantaged communities
  - ◆ Longer loan term
  - ◆ Reduced interest and fee rate
  - ◆ Forgivable principal
- ◆ Incentives for green projects
  - ◆ Lower rate for loans
  - ◆ Match waived for grants



Solar at Drinking Water Facility  
City of Somerton



## Green Project Examples

### Water Efficiency

- ◆ Leak detection
- ◆ Effluent reuse
- ◆ Automatic meters



### Green Stormwater Infrastructure

- ◆ **Low Impact Development**
  - Porous pavement, bioretention, curb cuts
- ◆ **Riparian Improvements**
  - Riparian buffers, wetlands, bioengineered stream banks



### Energy Efficiency

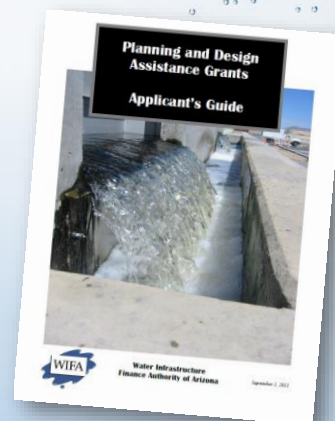
- ◆ Alternative energy
- ◆ Solar power for drinking water and wastewater facilities



WIFA

## WIFA Planning and Design Grants

- ◆ Grants are for **planning and design** only
- ◆ Funds help get an infrastructure project started
- ◆ Feasibility studies, capital improvement plans, preliminary engineering reports, final design
- ◆ Funds used to contract with engineer or other consultant
- ◆ Awards capped at \$35,000
  - ◆ 40% local match



WIFA

## WIFA Planning and Design Grants

### Next Grant Cycle (Grant Cycle 1, FY15)

- ◆ Applications available July 1, 2014
- ◆ Drinking water, wastewater and stormwater projects
- ◆ \$300K available
- ◆ Applications due August 29, 2014 at 3 p.m.
- ◆ Awards in October



### Grant Cycle 2 (FY15)

- ◆ Applications available January 2, 2015
- ◆ Drinking water only
- ◆ \$150K available
- ◆ Applications due February 27, 2015 at 3 p.m.
- ◆ Awards in April



Arizona  
Rural  
Water  
Infrastructure  
Committee





## Rural Water Infrastructure Committee (RWIC)

*Committee of federal and state agencies who provide loans, grants and technical assistance to Arizona's rural communities*

### ◆ "One Stop Shop"

- ◆ Coordination of federal, state, local and private sector resources
- ◆ Co-fund ("Bridge loans")

### ◆ Focus on rural communities

- ◆ Population less than 10,000
- ◆ Many partners can assist populations more than 10,000



## Rural Water Infrastructure Committee (RWIC)

- Water Infrastructure Finance Authority of Arizona (WIFA)
- USDA Rural Development (USDA RD)
- North American Development Bank (NADBank)
- Border Environment Cooperation Commission (BECC)
- Rural Community Assistance Corporation (RCAC)
- Bureau of Reclamation (BOR)
- U.S. Department of Housing & Urban Development (HUD)
- Governor's Office of Energy Policy
- Rural Water Association of Arizona (RWAA)
- Arizona Department of Environmental Quality (ADEQ)



## USDA Rural Development (USDA RD)

### Eligibility

- ◆ Rural areas and cities and towns with a population of 10,000 or less
- ◆ Municipalities, Counties, Special Districts, Native American Tribes and Non-Profit Corporations

### Financial Assistance

- ◆ Water and wastewater loan and grant program
- ◆ Interest Rates
  - ◆ Set quarterly
  - ◆ 3 rates available: Poverty, Intermediate, and Market
  - ◆ Eligibility for each rate determined by the median household income of the area and the type of project
- ◆ Term
  - ◆ Not to exceed the useful life of the facility or improvement to be financed
  - ◆ Maximum term on all loans is 40 years



## North American Development Bank (NADBank) & Border Environment Cooperation Commission (BECC)

### Eligibility

- ◆ Finance projects located within 100 km north & 300 km south of the border
- ◆ Water, wastewater and storm drainage
- ◆ Also waste, air, renewable energy sectors

### Two steps/two agencies:

1. BECC certifies projects
  - ◆ environmental, engineering, sustainability
2. NADBank provides financing



### NADBank Loans (EPA-funded Border Environment Infrastructure Fund (BEIF))

- ◆ Market rate, 25 year term
- ◆ Up to 85% of project cost

### Community Assistance Program (CAP) Grants

- ◆ Funding priority for projects in economically-distressed communities
- ◆ \$500,000 maximum grant



## Rural Community Assistance Corporation (RCAC)

### Eligibility

- ◆ Nonprofit organizations, public agencies and tribal governments
- ◆ Rural areas with populations of 50,000 or less

### Technical Assistance

- ◆ Board training
- ◆ Income survey

### Financial Assistance

#### Short term loans (1-3 years)

- ◆ PERs, environmental reports, predevelopment, legal, construction
- ◆ 5.5% - 5.75% interest rate (subject to change)

#### Intermediate term loans (up to 20 years)

- ◆ 5% fixed interest rate

#### Long term loans (up to 30 years)



## Rural Water Association of Arizona (RWAA)

### Technical Assistance

- ◆ Circuit riders provide on-site assistance in management, finance, operations compliance and security
- ◆ On-site/group training. Topics include:

Disinfection	Water Audits
Treatment Processes	Leak Detection
Security Vulnerability Assessment	Operations and Maintenance
Capacity Development	Smoke Testing
Emergency Response Planning	Groundwater Wellhead Protection
Funding Assistance	Safe Drinking Water Act Compliance
Certified Backflow Assistance	Cross Connection Control
Certification Training	Line Location

- ◆ Bi-annual conference



## Arizona Department of Environmental Quality

### Technical Assistance

- ◆ Monitoring Assistance Program
  - ◆ All public water systems serving less than 10,000 people
  - ◆ Contractor collects and analyzes samples to simplify water quality monitoring
  - ◆ On-line access to PWS database: [www.azdeq.gov/environ/water/dw/sdwis.html](http://www.azdeq.gov/environ/water/dw/sdwis.html)
- ◆ System Evaluation
  - ◆ ADEQ provides private consultant to prepare standardized system evaluation
- ◆ Operations & Maintenance Package
  - ◆ Operating and Recordkeeping Procedures
  - ◆ Emergency Operations/Emergency Response Plan
  - ◆ Backflow Prevention and Cross Connection Control Plan
- ◆ Operator Certification Training
  - ◆ No-cost workshops around the state
  - ◆ Subscribe to Operator Certification Listserv [www.azdeq.gov/subscribe.html](http://www.azdeq.gov/subscribe.html)



## Getting Started with RWIC

### Quarterly Meetings

- ◆ 1<sup>st</sup> Tuesday of every quarter at 1 p.m.
- ◆ Various locations around the state
- ◆ Connect with a funding agency
- ◆ Determine next steps
- ◆ Fill out a Project Information Form
  - ◆ General Information
  - ◆ Demographic & Service Area
  - ◆ Project Description
  - ◆ Estimated Project Costs
  - ◆ Type of Assistance Needed

### Annual Funding Forum

- ◆ Usually in November in Phoenix
- ◆ Presentations by each funding agency
- ◆ Funding Expo





## Greater Arizona Development Authority (GADA)

- ◆ To assist Arizona communities and tribal governments with the development of public infrastructure projects that enhance community and economic development
  - ◆ Financial assistance loans
  - ◆ Technical assistance loans for infrastructure projects up to \$250K
  - ◆ Past Examples Include:
    - ◆ Facilities (Public Safety, Library, Administrative, Fire, etc.)
    - ◆ Transportation Improvements
    - ◆ Debt Refinancing/Consolidation
    - ◆ Parks/Open Space
    - ◆ Water/Sewer
    - ◆ Flood Control
- ◆ Transferred to WIFA from Department of Commerce on July 1, 2012
- ◆ Approaching Legislature to re-fund the program





**Sara Konrad**  
**Project Manager**

skonrad@azwifa.gov  
Phone: (602) 364-1319  
Toll-Free: (877) 298-0425

[www.azwifa.gov](http://www.azwifa.gov)



**Arizona  
Rural  
Water  
Infrastructure  
Committee**

**Susan Craig**  
**RWIC Coordinator**

scraig@azwifa.gov  
Phone: (602) 364-1236  
Toll-Free: (877) 298-0425

[www.rwic.net](http://www.rwic.net)



**Julia Richard**  
**Senior Development  
Manager**

jrichard@azgada.gov  
Phone: (602) 364-1381  
Toll-Free: (877) 298-0425

[www.azwifa.gov/gada](http://www.azwifa.gov/gada)