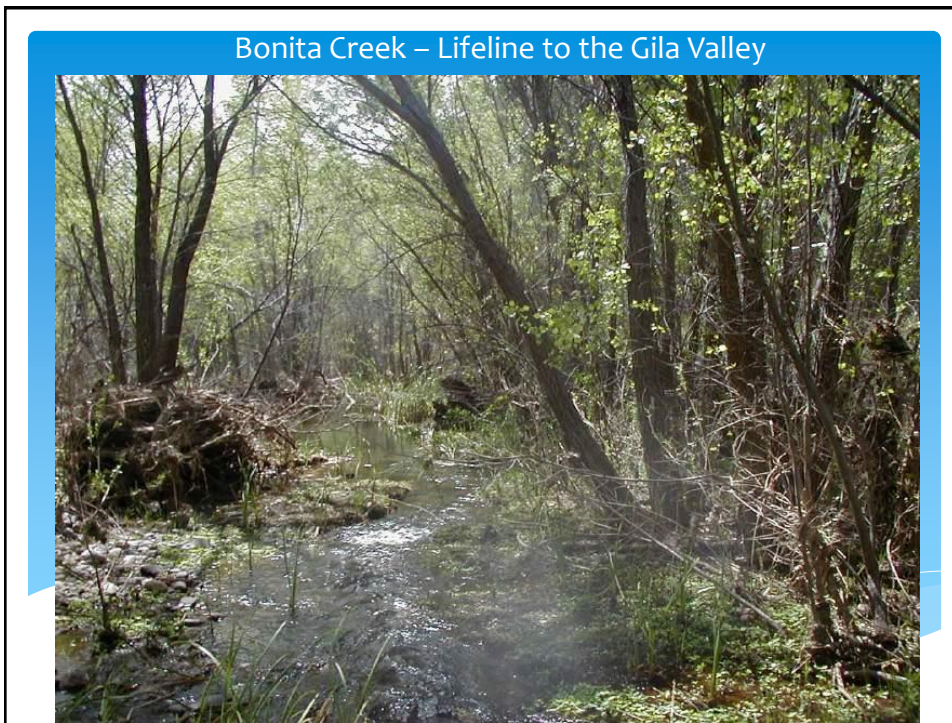
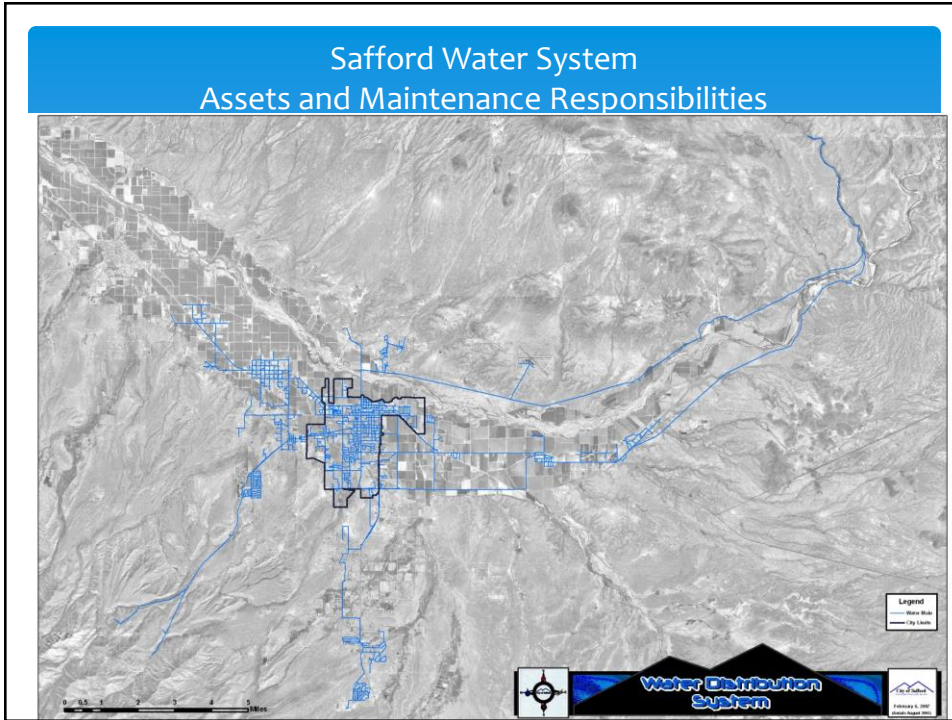


CITY OF SAFFORD WATER DIVISION



The City of Safford
Utilities Serves Our
Customers With:

- Water
- Sewer
- Gas
- Electricity
- Regional Landfill
- WRP



City of Safford's water supply and growth potential is dependent upon continued unfettered access to our water allocation from Bonita Creek.



Bonita Water System Renovation

1994



24" steel welded aerial line.

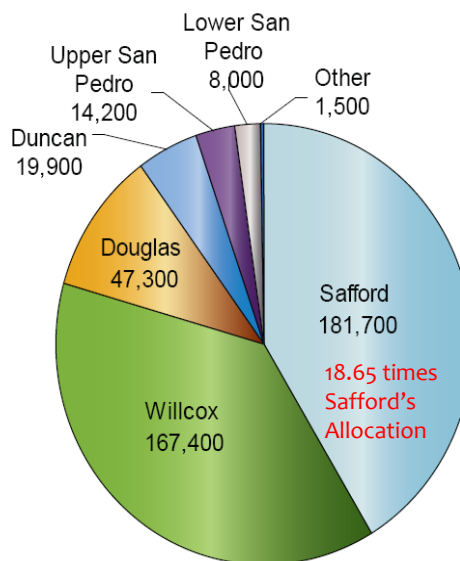


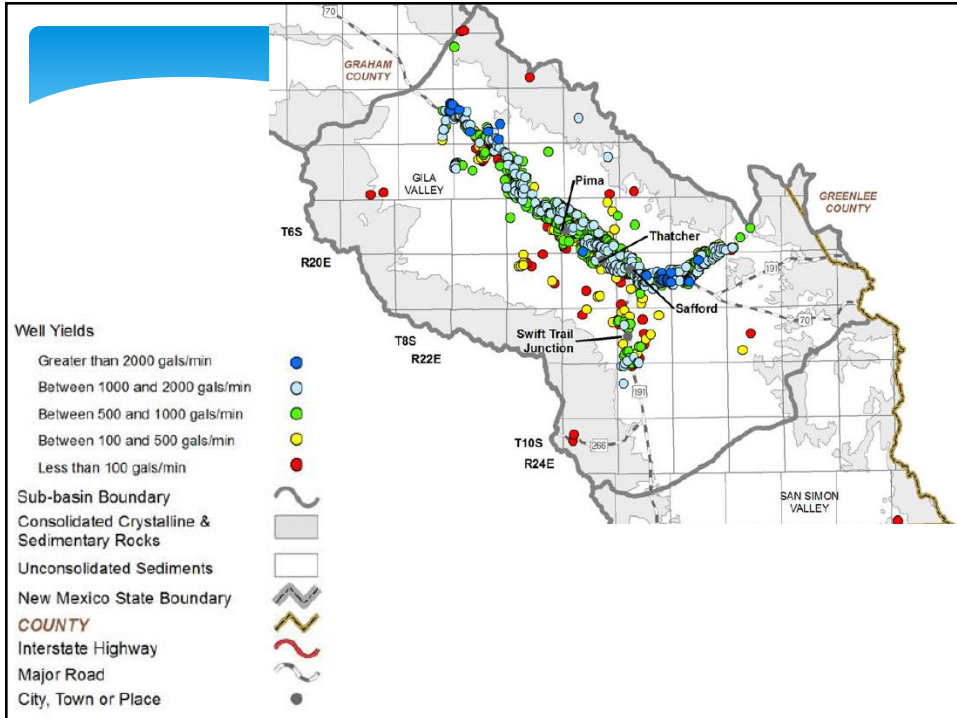
Arizona Department of Water Resources
April 2009

ARIZONA WATER ATLAS
VOLUME 3
SOUTHEASTERN ARIZONA PLANNING AREA



Figure 3.0-18 Southeastern Arizona Planning Area average annual agricultural demand 2001-2005 by basin, in acre-feet

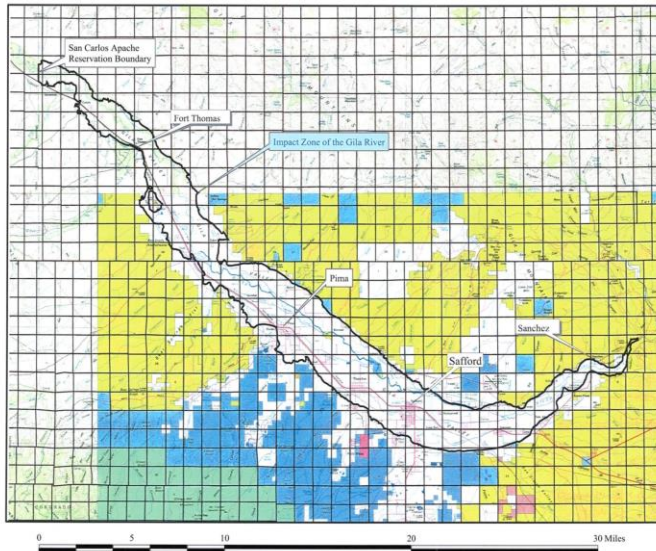




City of Safford Total Water Allotment
9740 AF per year
or 3,173,792,928 gallons
As per the agreement between the:

- * GILA RIVER INDIAN COMMUNITY
- * THE SAN CARLOS IRRIGATION AND DRAINAGE DISTRICT
- * THE CITY OF SAFFORD
- * THE UNITED STATES OF AMERICA

The "Impact Zone"



Notice to Viewer of this Exhibit:

This map is for illustrative purposes only and is not to be relied upon for any decision involving land or other transactions. The boundaries on this map have not been verified by ground observations and are subject to adjustment for accuracy.

More precise depictions of the boundaries of the impact zone can be reproduced at the desired scale from electronic media on file with the Arizona Department of Water Resources.

There is no warranty, guarantee or certification (express or implied) as to the accuracy of this document.

Explanation:

Map Base is from 1:100,000 Scale
USGS Topographic Quadrangles

One - mile squares are Sections

Heavy black lines are the exterior boundaries of the Impact Zone, which encompasses the Fluvial Depositional System of the Gila River as interpreted from inspection of Digital Orthophoto Quadrangle Quarters (DOQQs)

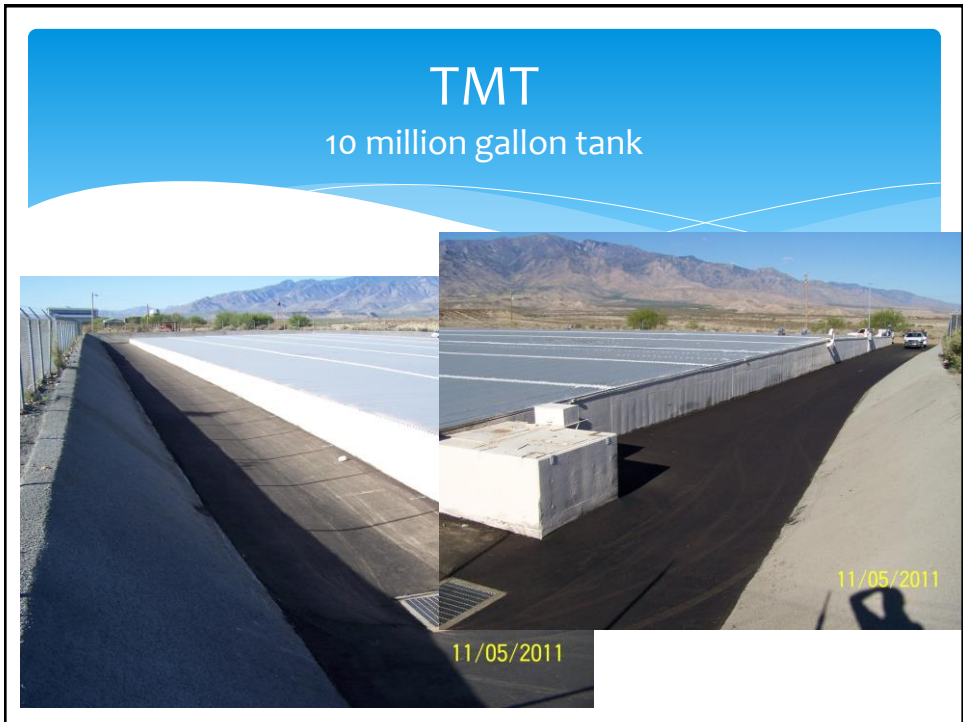
**Attachment B.1-4
Map of Gila River Impact Zone
in Vicinity of Safford, Arizona**





Storage tanks

<p>Quail Ridge 1 MG</p> <p>08/08/2013</p>	<p>Dailey Est. 1.5mg</p> <p>08/08/2013</p>	<p>Hillcrest 2 MG</p> <p>08/08/2013</p>
<p>Discovery Park 3 MG</p> <p>08/08/2013</p>	<p>Lebanon 2 MG</p> <p>08/08/2013</p>	



Ten Million Gallon Tank Rehab



TMT New Liner



Water System Facts

1. We have 1,293,449 feet of water pipe (245 miles)
2. 3,684 water valves
3. 961 fire hydrants
4. 7,895 water connections
5. We serve approximately 23,000 customers

Water Production

- * Last year we produced over 1.2 billion gallons of water.
- * 3,558 acre feet.

Solomon Project Epley's Ruin Site Dig



Archeologists digging and sifting for artifacts



When the watering hole dries up,



the animals look at each other differently.

- An old African proverb.

