

Protecting Arizona Surface Waters



What is ADEQ's regulatory authority?

Federal



WOTUS

State



Non-WOTUS

What is WOTUS?



Colorado River below Hoover Dam, Erin Jordan

WOTUS

- Traditional Navigable Water
- Flows into a TNW

Non-WOTUS

- No connectivity to a TNW

Why is flow regime important?

Perennial

- Runs year-round

Intermittent

- Runs seasonally

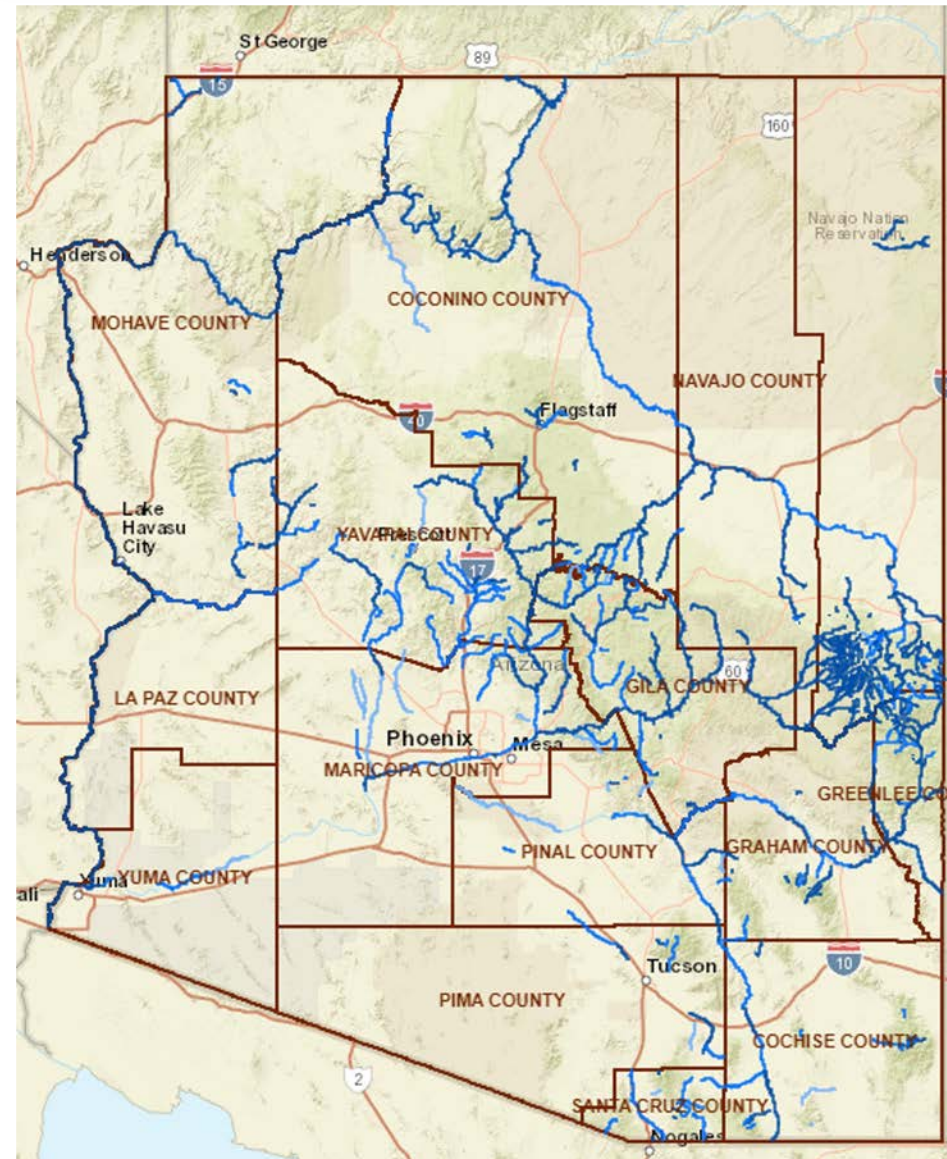
Ephemeral

- Runs in response to storm event



Tanque Verde Creek, Erin Jordan

What does that mean for ephemerals?



Legend

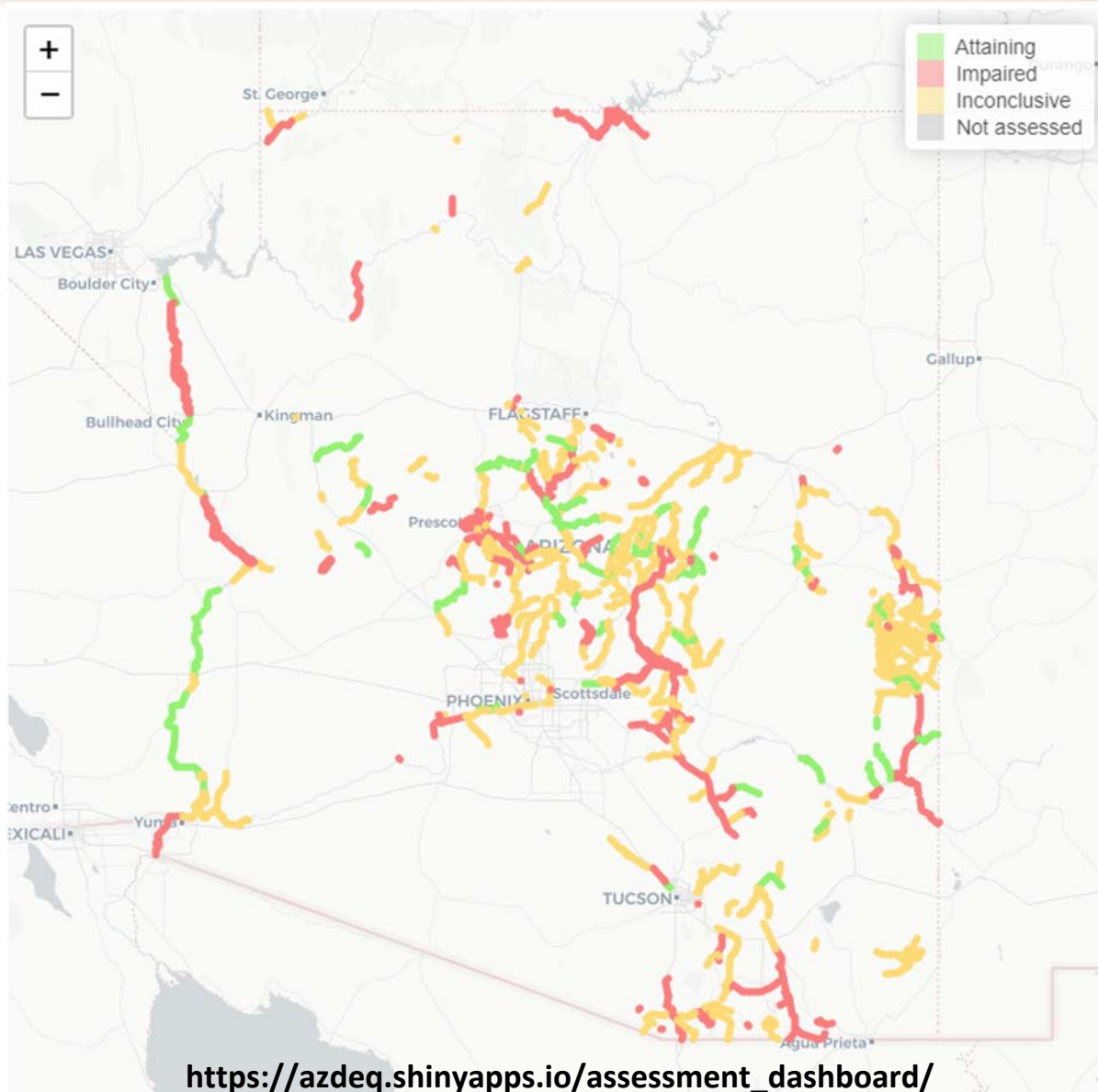
Flow Regimes - Perennial Inter
Ephemeral Streams

- Ephemeral
- Intermittent
- Perennial

Counties



How do we know if a surface water is healthy?



Canyon downstream of Arizona Hot Springs, Erin Jordan

How do we know if a surface water is healthy?



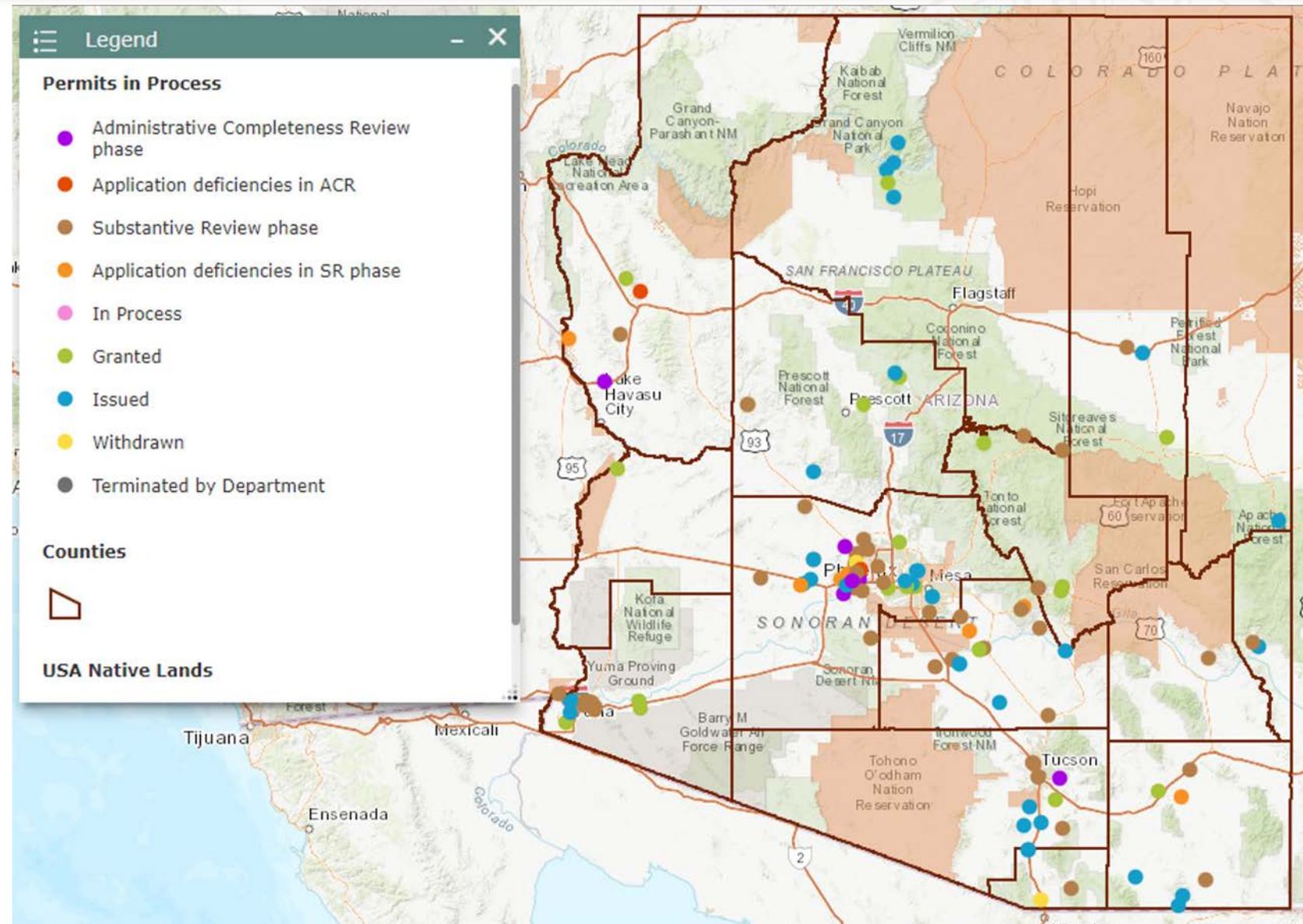
East Verde River, Erin Jordan

A large black outline of the state of Arizona is centered on the right side of the slide. Inside the outline, the text "114,000 Sq. Miles" is written in a large, bold, black font. In the background, a faint circular seal of the State of Arizona is visible, containing the text "GREAT SEAL OF THE STATE OF ARIZONA" and "1912".

**114,000
Sq. Miles**

How does permitting protect waters?

Permits in Progress
on azdeq.gov



But what about all the other ephemerals?



Canyon in the Chiricahua National Monument, Erin Jordan



What are some of the other protections?



New U.S. 60 Bridge, ADOT

- U.S Army Corps 404 permits
- Environmental Impact Statements on federal land
- Arizona Aquifer Protection Program
- Solid waste & hazardous waste regulations

Thank You

Erin Jordan, PhD

jordan.erin@azdeq.gov

