

CITY OF PHOENIX AND LARGE COMMERCIAL WATER USERS

Max Wilson, Ph.D.

Water Resources Management Advisor, City Manager's Office



PHX
WATER
SMART



PHX WATER SMART

WHERE DOES THE WATER

COME FROM?



PHOENIX WATER SUPPLY

PERCENTAGES

58% SALT & VERDE RIVER WATER

40% COLORADO RIVER WATER

2% GROUNDWATER





PHX WATER SMART

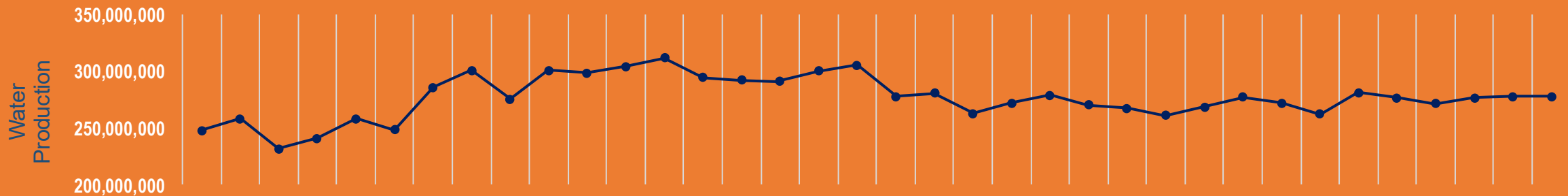
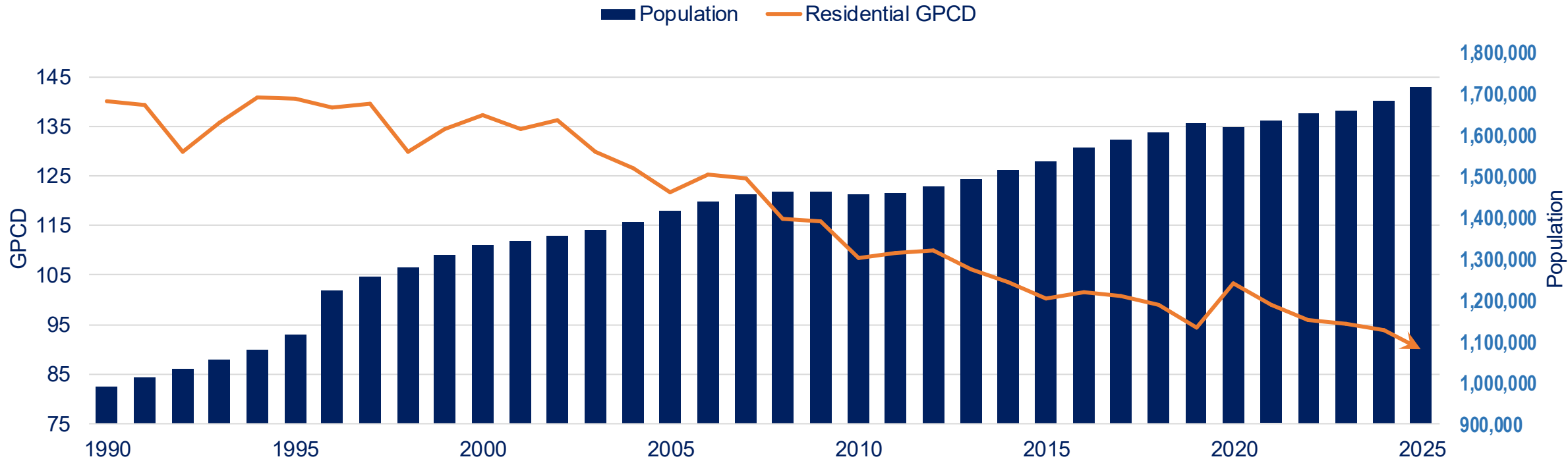
WHERE DOES THE WATER

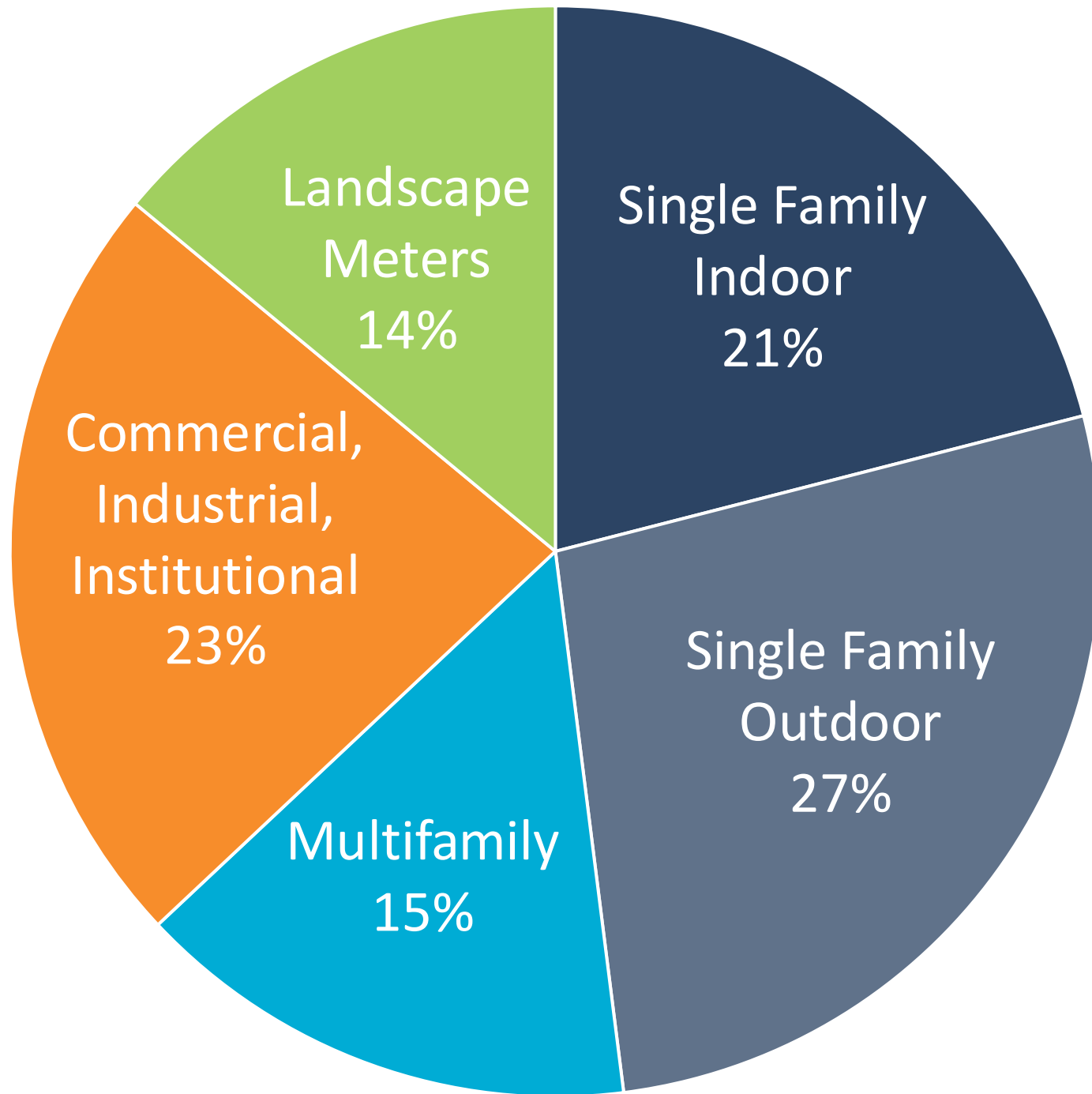
GO?

PHOENIX WATER DEMAND



Population and Residential Water Use in Gallons Per Capita Per Day (GPCD)





This pie chart represents water delivery categories in the City of Phoenix.



PHX WATER SMART

WHAT ARE THE

TAKE AWAYS?



1

Phoenix is an almost 100% surface water city.

2

There are physical, legal, and policy challenges associated with reverting to groundwater.

3

Total water demand in Phoenix is stable.

4

2/3 of water demand in Phoenix is residential.

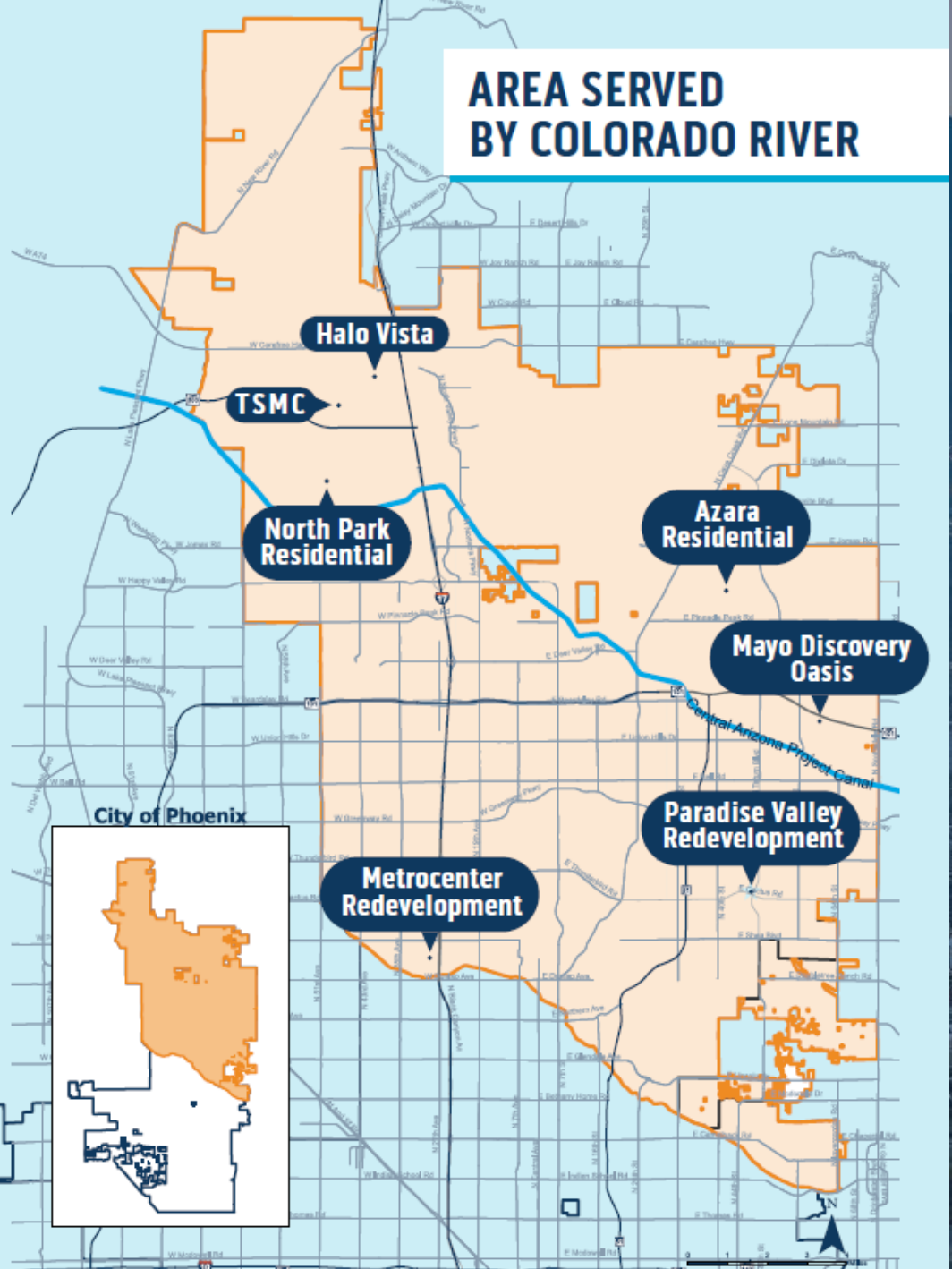


PHX WATER SMART

SO WHY TALK ABOUT

COMMERCIAL?

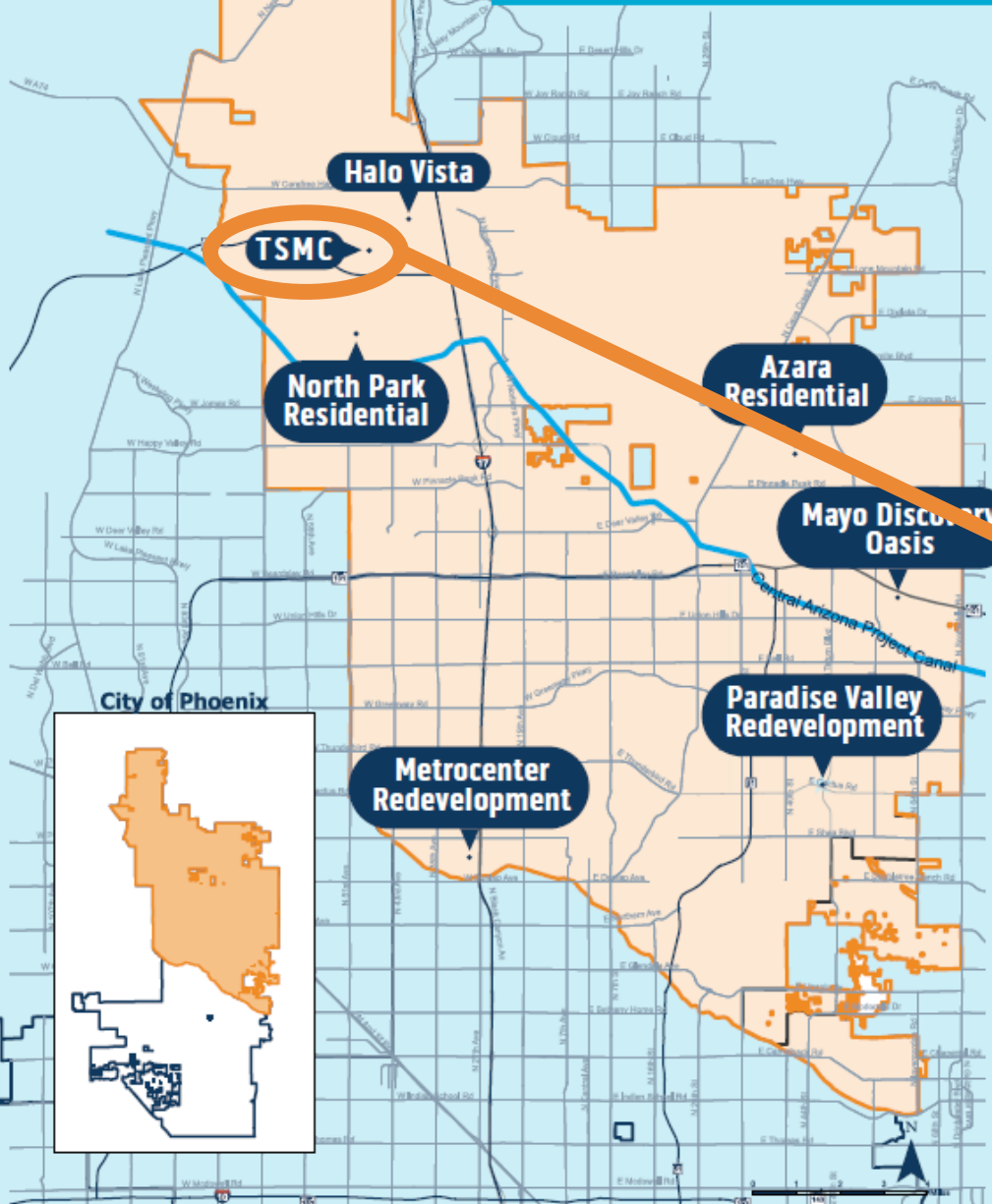
AREA SERVED BY COLORADO RIVER



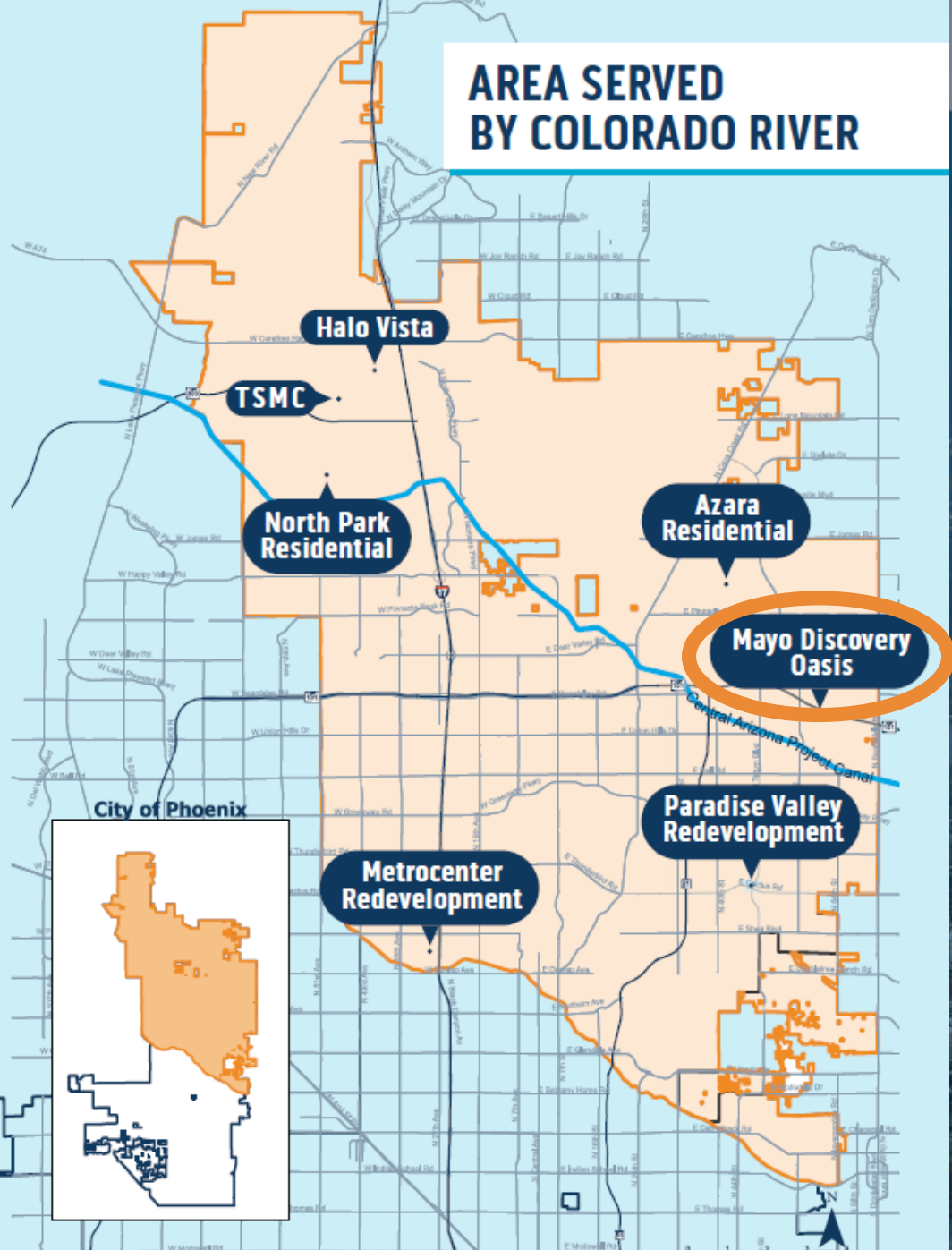
AREA SERVED BY COLORADO RIVER



AREA SERVED BY COLORADO RIVER



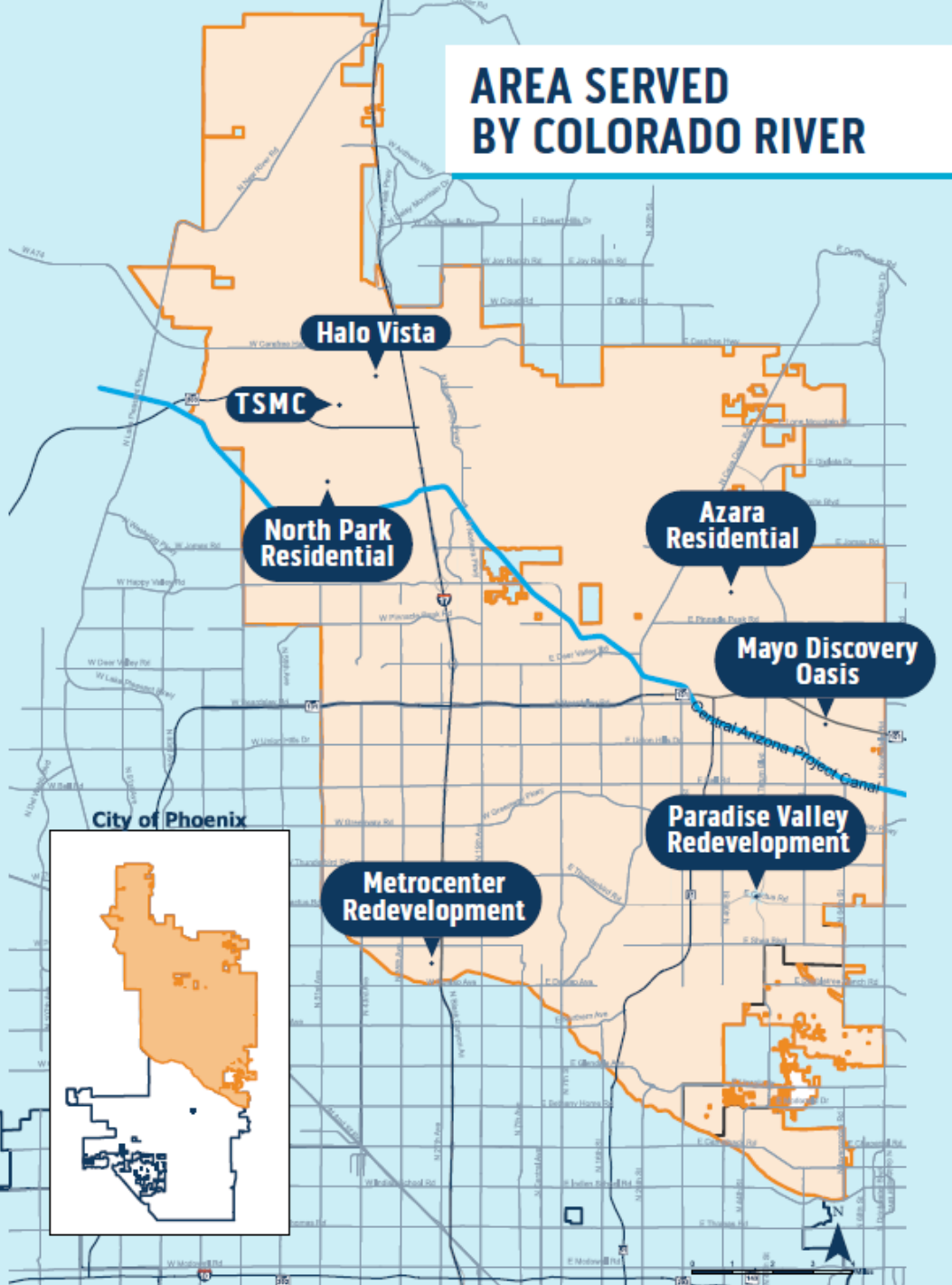
AREA SERVED BY COLORADO RIVER



PHX WATER SMART



**AREA SERVED
BY COLORADO RIVER**



PHX WATER SMART

MUST HAVE

NOT

NICE TO HAVE



PHX WATER SMART

**WE HAVE TO MEET TWO CHALLENGES
SIMULTANEOUSLY:**

- 1.) PHOENIX'S EMERGENCE INTO
NATIONALLY CRITICAL INDUSTRIES**
- 2.) A POTENTIAL RESOURCE CRISIS**



PHX WATER SMART

SO HOW ARE WE

DOING IT?

STEP ONE

1

WORK CLOSELY WITH THE EARLY ADOPTERS

- Early adopters are making the largest capital investments; they have the most to gain and lose from projects failing.
- Open and honest conversations about resource constraints and resource limitations are the key.
- Development agreements are a vehicle when standards don't exist.
- This is the story of water recycling at TSMC.



PHX WATER SMART

STEP TWO 2

PAVE THE WAY FOR THOSE WHO COME NEXT

- For better or worse, the agreements you make with early adopters sets the floor for future developments.
- You can't do everything one development agreement at a time; eventually you need standards.
- Phoenix's Sustainable Desert City Development Policy:
 - Pause on Annexation
 - Standard Stipulations
 - Large Water User Ordinance

1. When the City of Phoenix Drought Management Plan is active, the City of Phoenix should employ increased level of scrutiny regarding request for annexations.

2. Request for annexation from properties outside of the current Water Services Department service area should be discouraged to ensure that water resources are focused on areas within the current service area. County Islands located within the Water Services Department service area will not be affected by this policy.


Section 3. Applicability and Implementation

The policies will be implemented after City Council adoption. Any updates to codes or ordinances will include specific standards and will be vetted and ultimately approved through the public hearing process.

PASSED by the City Council of the City of Phoenix this 13th day of June, 2023.


MAYOR

ATTEST:


Denise Archibald, City Clerk



.....
.....
.....
.....
.....
.....



WHO IS IMPACTED?

250K GPD or GREATER

- Water Conservation Plan submittal and approval.

500K GPD or GREATER

- Must obtain approval of Water Conservation Plan
- **AND** meet at least 30% of their consumptive demand with recycled or conserved water
- **AND** fit within the City of Phoenix's resource limitations
- Economic Benefits may be considered in meeting the 30% requirement

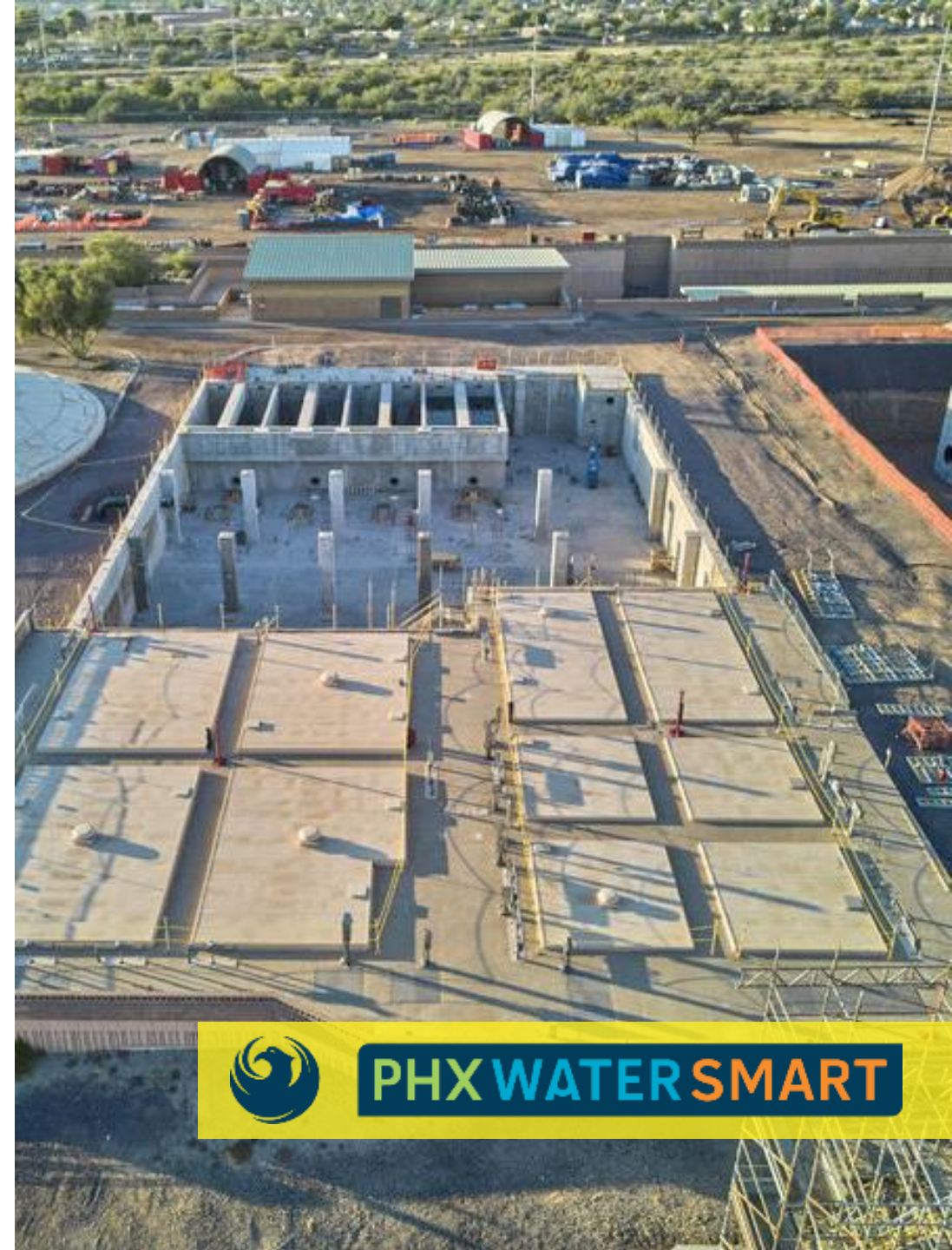


PHX WATER SMART

STEP THREE 3

ENSURE EVERYONE PAYS THEIR FAIR SHARE

- Some conservation infrastructure cannot be constructed on a project-by-project basis.
- Luckily, cities have a tool for ensure development pays (most of...) its part: impact fees.
- Fees can be expanded into new areas as long as you can demonstrate that your existing customers are making commiserate investments.
- That is how Phoenix built advanced water purification into its existing water treatment fees.



PHX WATER SMART

STEP FOUR

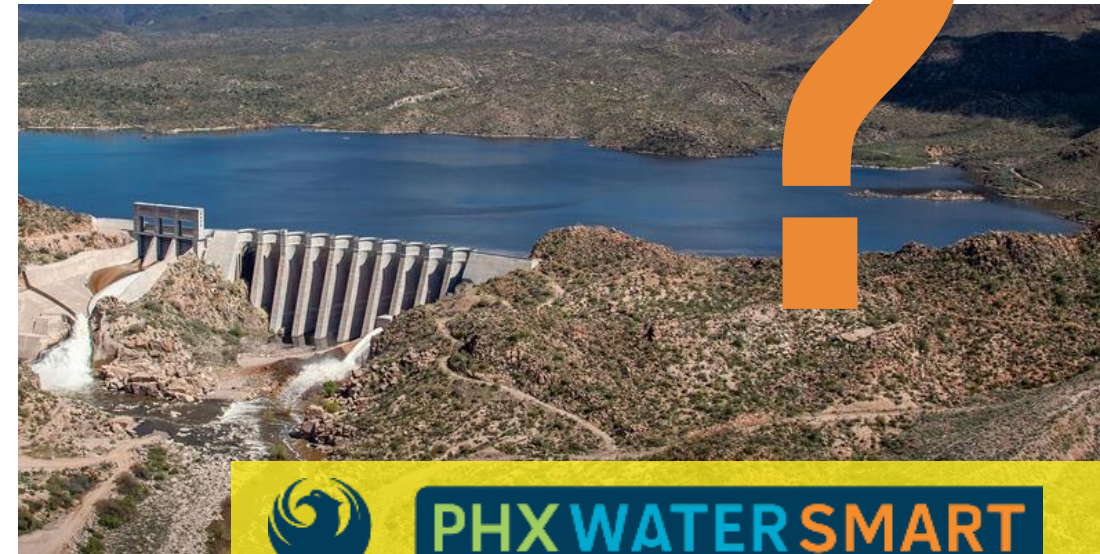
4



PURE WATER PHOENIX

DEVELOP THE WATER SUPPLIES OF THE FUTURE

- Arizona cannot conserve the entire Colorado River.
- If we are going to balance supply and demand over the long-term, we must develop new water supplies.
- Options abound, but they are all expensive.
- Funding is one thing, building is another.



PHX WATER SMART



PHX WATER SMART

THESE ARE PROBLEMS, BUT THEY ARE
SOLVABLE



PHX WATER SMART

CONTACT US

PHOENIX.GOV/DROUGHT



maxwell.wilson@phoenix.gov



(602) 261-8532



@PHXWATER



[youtube.com/user/cityofphoenixaz](https://www.youtube.com/user/cityofphoenixaz)