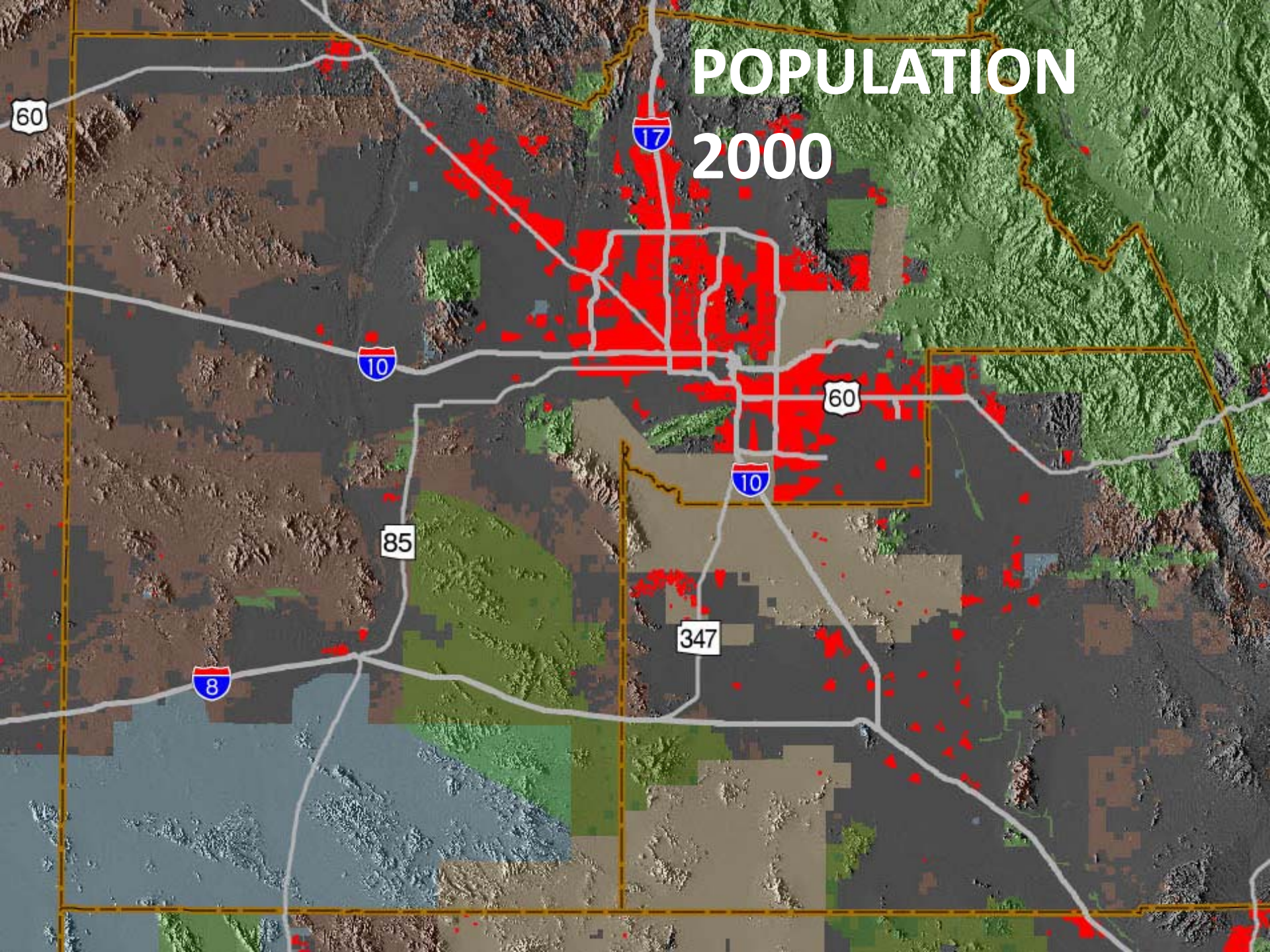


WHERE AND HOW WILL THE WATER BE USED IN 2048?

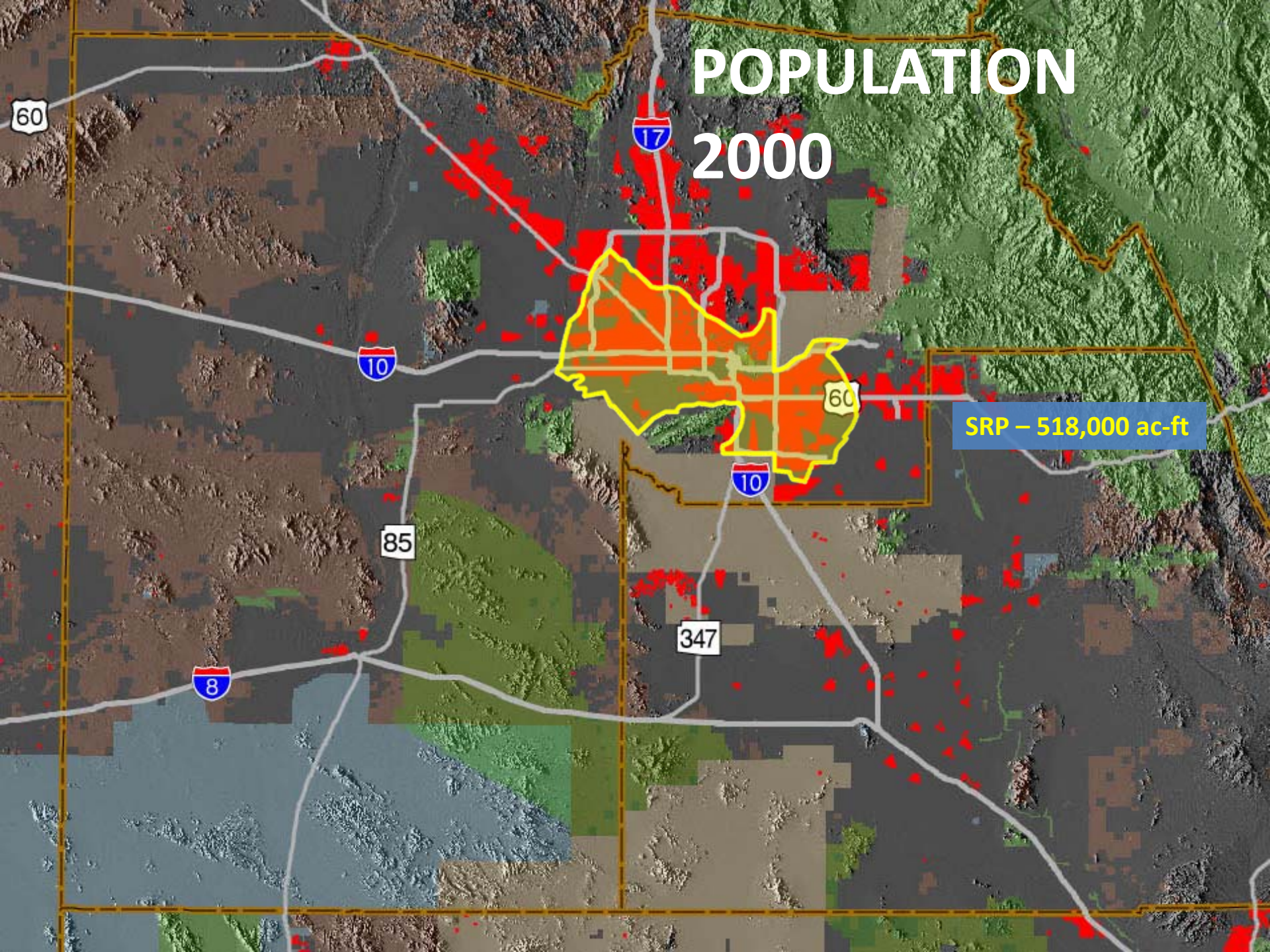
A MARICOPA COUNTY PERSPECTIVE

Ray L. Jones. P.E.
Chairman, WESTMARC

POPULATION 2000

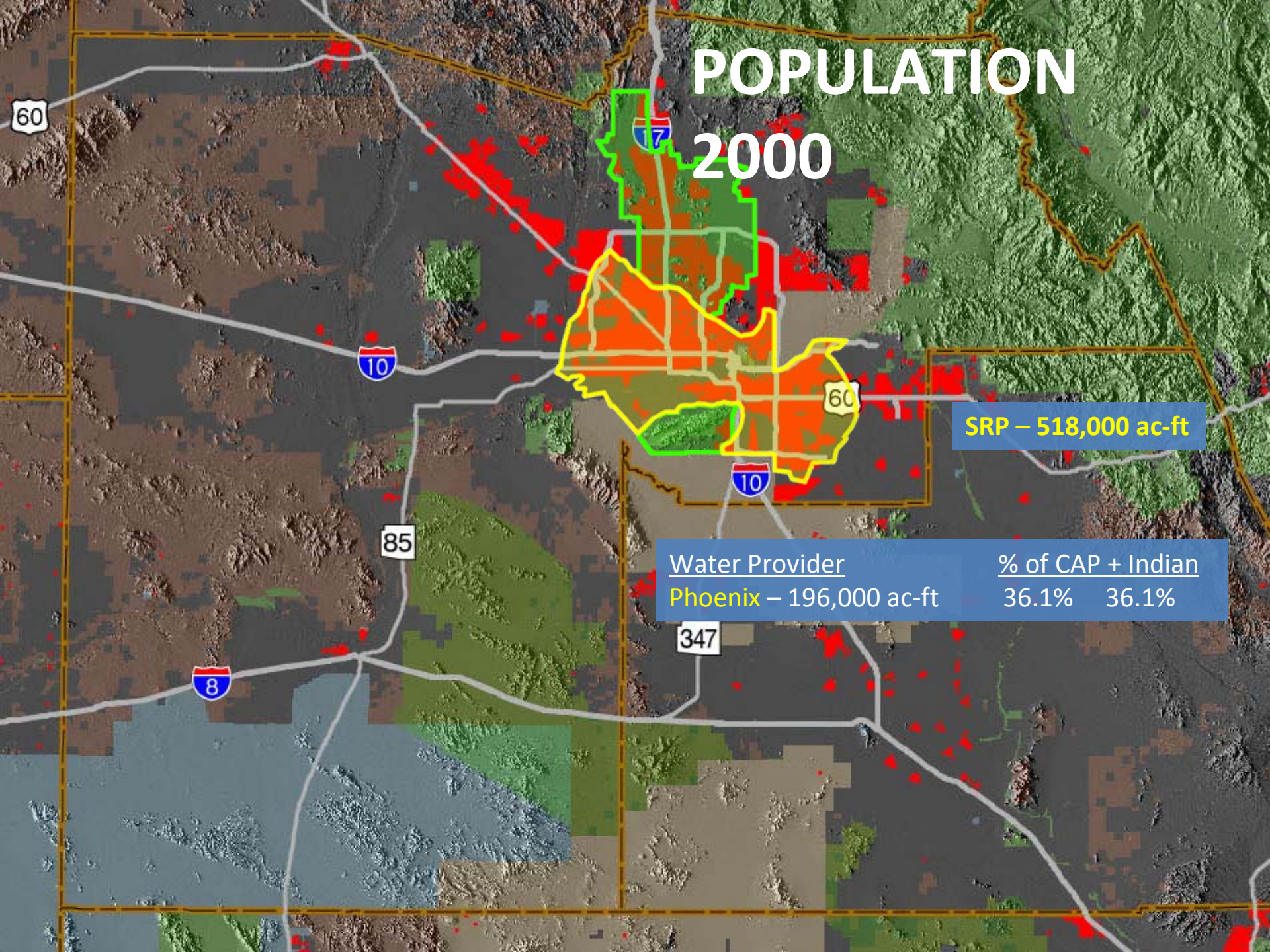


POPULATION 2000



SRP - 518,000 ac-ft

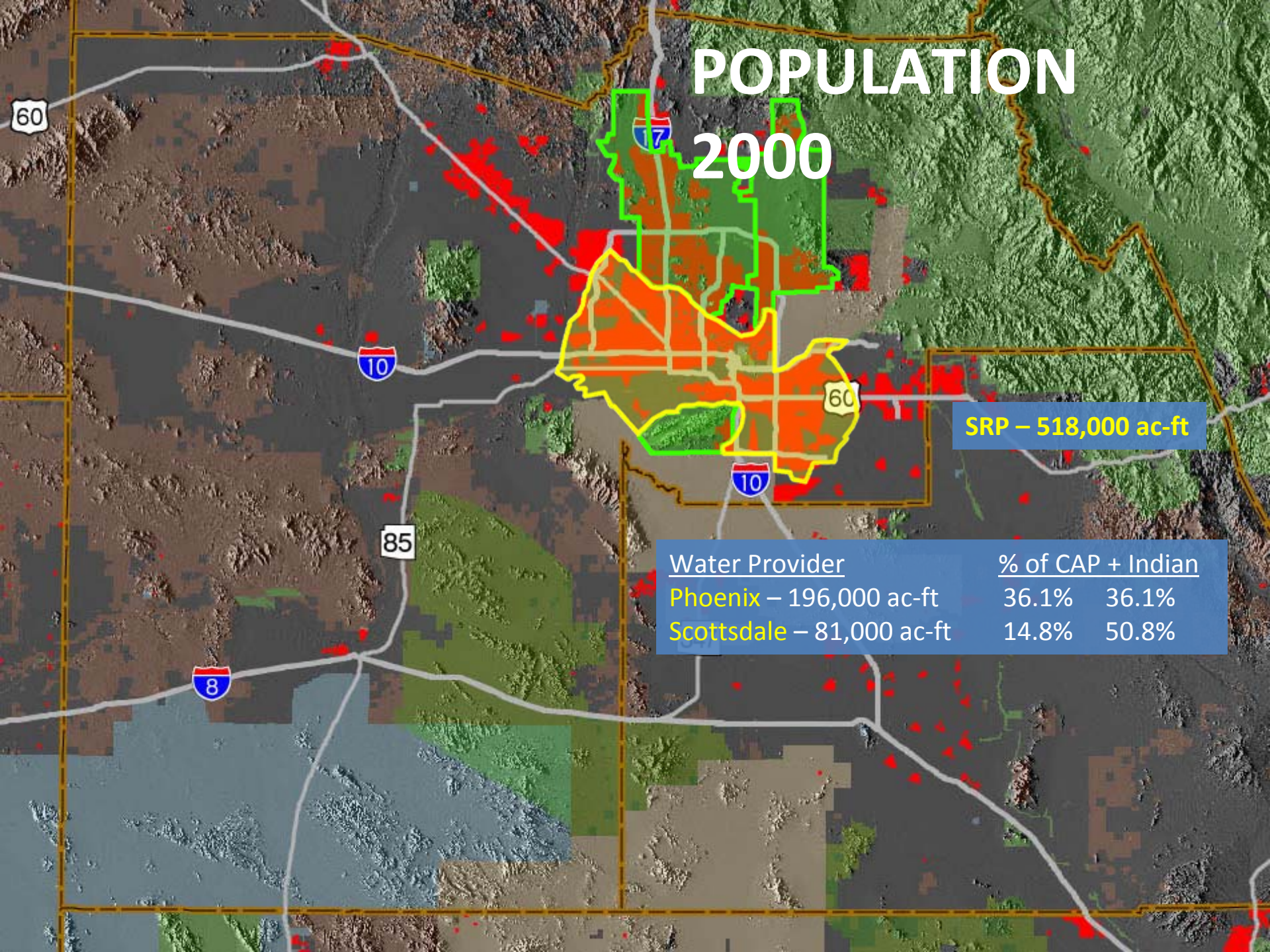
POPULATION 2000



POPULATION 2000

SRP – 518,000 ac-ft

Water Provider	% of CAP + Indian	
Phoenix – 196,000 ac-ft	36.1%	36.1%
Scottsdale – 81,000 ac-ft	14.8%	50.8%



POPULATION 2000

SRP – 518,000 ac-ft

Water Provider	% of CAP + Indian	
Phoenix – 196,000 ac-ft	36.1%	36.1%
Scottsdale – 81,000 ac-ft	14.8%	50.8%
Mesa – 77,000 ac-ft	14.0%	64.8%

POPULATION 2000

SRP – 518,000 ac-ft

Water Provider	% of CAP + Indian	
Phoenix – 196,000 ac-ft	36.1%	36.1%
Scottsdale – 81,000 ac-ft	14.8%	50.8%
Mesa – 77,000 ac-ft	14.0%	64.8%
Peoria – 32,000 ac-ft	5.9%	70.7%

POPULATION 2000

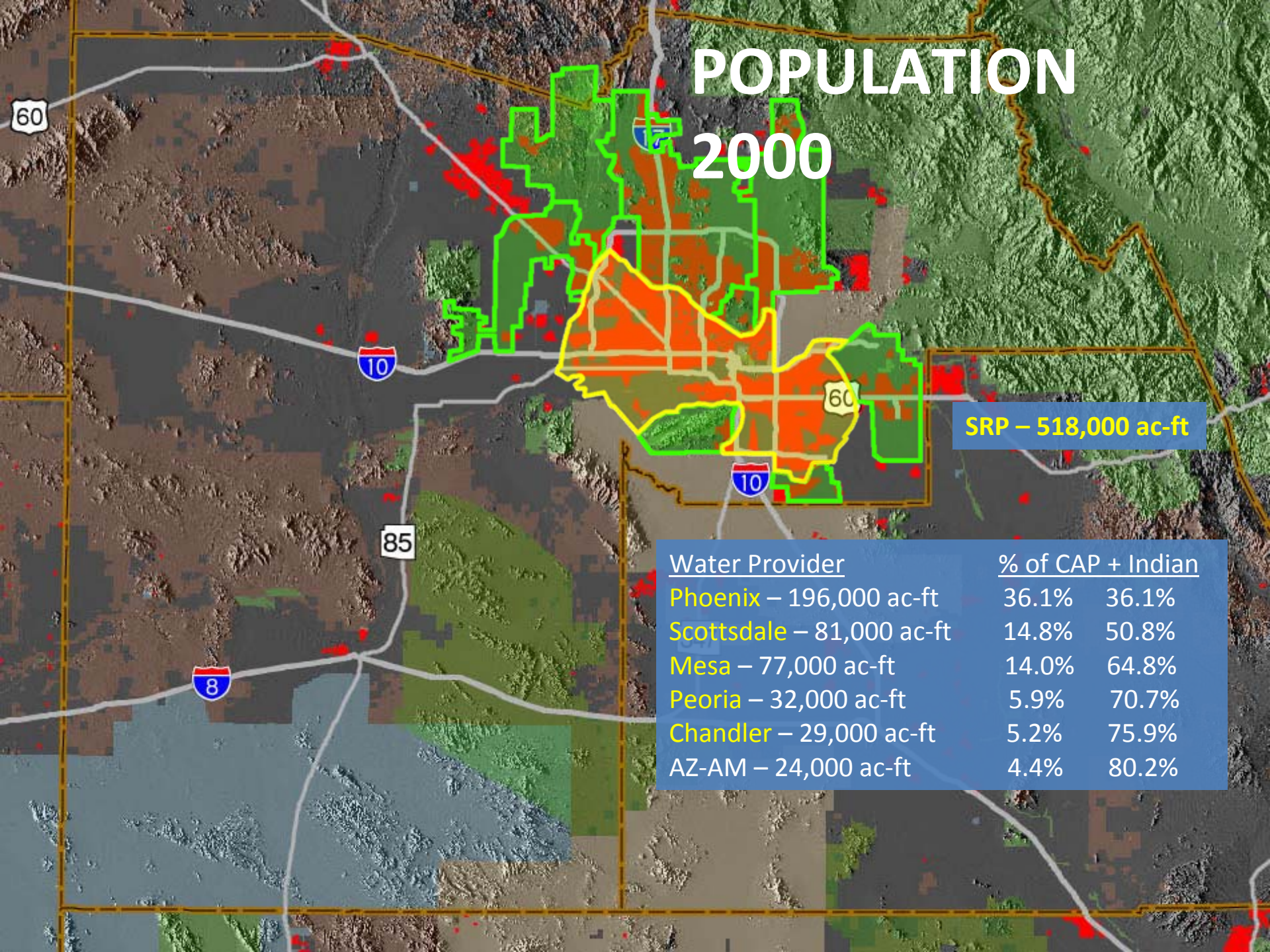
SRP – 518,000 ac-ft

<u>Water Provider</u>	<u>% of CAP + Indian</u>	
Phoenix – 196,000 ac-ft	36.1%	36.1%
Scottsdale – 81,000 ac-ft	14.8%	50.8%
Mesa – 77,000 ac-ft	14.0%	64.8%
Peoria – 32,000 ac-ft	5.9%	70.7%
Chandler – 29,000 ac-ft	5.2%	75.9%

POPULATION 2000

SRP – 518,000 ac-ft

Water Provider	% of CAP + Indian	
Phoenix – 196,000 ac-ft	36.1%	36.1%
Scottsdale – 81,000 ac-ft	14.8%	50.8%
Mesa – 77,000 ac-ft	14.0%	64.8%
Peoria – 32,000 ac-ft	5.9%	70.7%
Chandler – 29,000 ac-ft	5.2%	75.9%
AZ-AM – 24,000 ac-ft	4.4%	80.2%



POPULATION 2000

SRP – 518,000 ac-ft

<u>Water Provider</u>	<u>% of CAP + Indian</u>	
Phoenix – 196,000 ac-ft	36.1%	36.1%
Scottsdale – 81,000 ac-ft	14.8%	50.8%
Mesa – 77,000 ac-ft	14.0%	64.8%
Peoria – 32,000 ac-ft	5.9%	70.7%
Chandler – 29,000 ac-ft	5.2%	75.9%
AZ-AM – 24,000 ac-ft	4.4%	80.2%
Glendale – 23,000 ac-ft	4.1%	84.3%

POPULATION 2000

SRP – 518,000 ac-ft

<u>Water Provider</u>	<u>% of CAP + Indian</u>	
Phoenix – 196,000 ac-ft	36.1%	36.1%
Scottsdale – 81,000 ac-ft	14.8%	50.8%
Mesa – 77,000 ac-ft	14.0%	64.8%
Peoria – 32,000 ac-ft	5.9%	70.7%
Chandler – 29,000 ac-ft	5.2%	75.9%
AZ-AM – 24,000 ac-ft	4.4%	80.2%
Glendale – 23,000 ac-ft	4.1%	84.3%
Gilbert – 19,000 ac-ft	3.5%	87.8%

POPULATION 2000

SRP – 518,000 ac-ft

<u>Water Provider</u>	<u>% of CAP + Indian</u>	
Phoenix – 196,000 ac-ft	36.1%	36.1%
Scottsdale – 81,000 ac-ft	14.8%	50.8%
Mesa – 77,000 ac-ft	14.0%	64.8%
Peoria – 32,000 ac-ft	5.9%	70.7%
Chandler – 29,000 ac-ft	5.2%	75.9%
AZ-AM – 24,000 ac-ft	4.4%	80.2%
Glendale – 23,000 ac-ft	4.1%	84.3%
Gilbert – 19,000 ac-ft	3.5%	87.8%
Goodyear – 18,000 ac-ft	3.2%	91.1%

POPULATION 2000

SRP – 518,000 ac-ft

<u>Water Provider</u>	<u>% of CAP + Indian</u>	
Phoenix – 196,000 ac-ft	36.1%	36.1%
Scottsdale – 81,000 ac-ft	14.8%	50.8%
Mesa – 77,000 ac-ft	14.0%	64.8%
Peoria – 32,000 ac-ft	5.9%	70.7%
Chandler – 29,000 ac-ft	5.2%	75.9%
AZ-AM – 24,000 ac-ft	4.4%	80.2%
Glendale – 23,000 ac-ft	4.1%	84.3%
Gilbert – 19,000 ac-ft	3.5%	87.8%
Goodyear – 18,000 ac-ft	3.2%	91.1%
Surprise – 10,000 ac-ft	1.9%	92.9%

POPULATION 2050

SRP – 518,000 ac-ft

<u>Water Provider</u>	<u>% of CAP + Indian</u>	
Phoenix – 196,000 ac-ft	36.1%	36.1%
Scottsdale – 81,000 ac-ft	14.8%	50.8%
Mesa – 77,000 ac-ft	14.0%	64.8%
Peoria – 32,000 ac-ft	5.9%	70.7%
Chandler – 29,000 ac-ft	5.2%	75.9%
AZ-AM – 24,000 ac-ft	4.4%	80.2%
Glendale – 23,000 ac-ft	4.1%	84.3%
Gilbert – 19,000 ac-ft	3.5%	87.8%
Goodyear – 18,000 ac-ft	3.2%	91.1%
Surprise – 10,000 ac-ft	1.9%	92.9%

POPULATION 2050

SRP – 518,000 ac-ft

<u>Water Provider</u>	<u>% of CAP + Indian</u>	
Phoenix – 196,000 ac-ft	36.1%	36.1%
Scottsdale – 81,000 ac-ft	14.8%	50.8%
Mesa – 77,000 ac-ft	14.0%	64.8%
Peoria – 32,000 ac-ft	5.9%	70.7%
Chandler – 29,000 ac-ft	5.2%	75.9%
AZ-AM – 24,000 ac-ft	4.4%	80.2%
Glendale – 23,000 ac-ft	4.1%	84.3%
Gilbert – 19,000 ac-ft	3.5%	87.8%
Goodyear – 18,000 ac-ft	3.2%	91.1%
Surprise – 10,000 ac-ft	1.9%	92.9%

Population Is Shifting

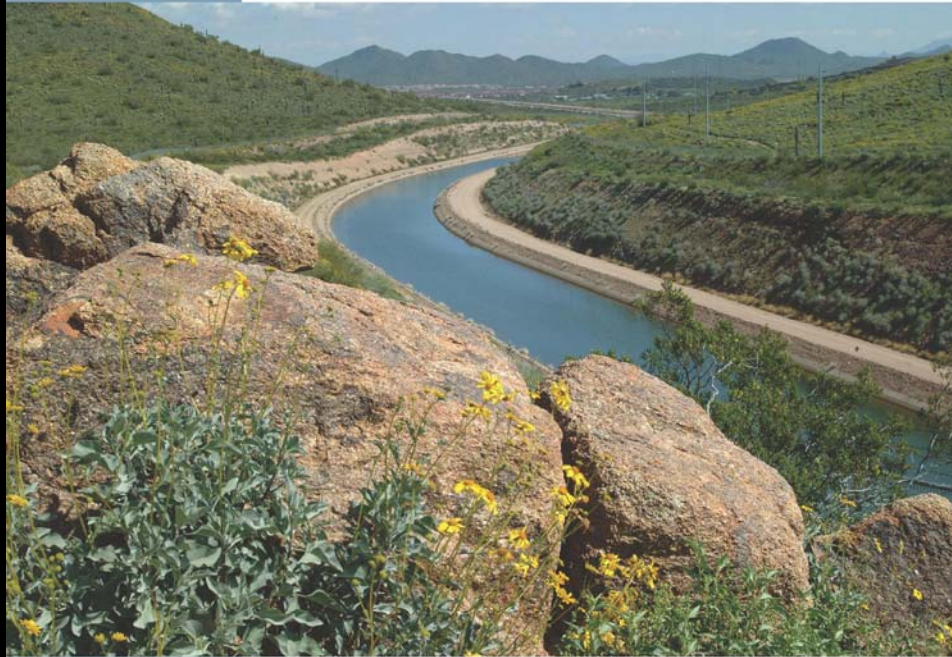
	Percent of Projected Growth <u>2005 - 2030</u>
• East Valley	26%
• West Valley	74%
• Top 75% of CAP Users	38%
• Everyone Else	62%
• Non CAGR D Providers	37%
• CAGR D Dependant Providers	63%

Changes will be more pronounced in 2048!

Use of Colorado River Water - 2048

- Increasing CAGR D Dependence
 - Increased CAGR Use of Colorado River Water
- Increasing Interest in Acquiring New/Permanent Water Supplies
 - Pressure to shift On-River uses to deliveries in Central Arizona
 - Increased pressure on CAP delivery infrastructure, expansion likely by 2048
 - Expansion of West Valley Direct Delivery Capabilities
- Increasing Competition for Water Supplies
 - “Haves” vs. “Have nots”
 - Maricopa vs. Pinal vs. Pima
 - CAP vs. River Communities
 - CAP vs. Rural Arizona

THE UNIVERSITY OF ARIZONA.
Water Resources Research Center
College of Agriculture and Life Sciences



The University of Arizona



The Importance of the Colorado River to Arizona's Future

June 24, 2008
Phoenix, Arizona

