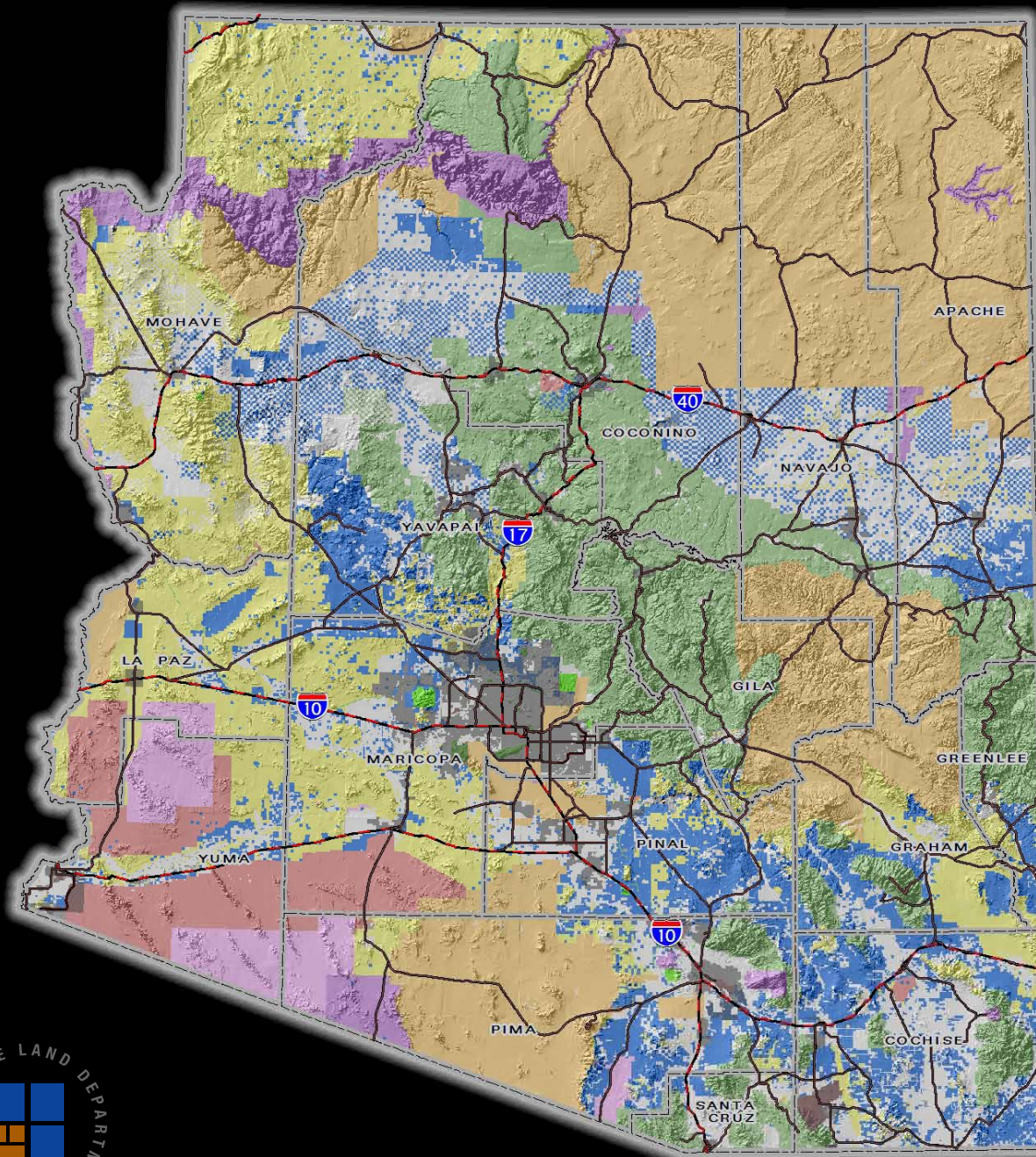


ARIZONA STATE  **LAND DEPARTMENT**

**Annual Conference of the
Arizona Water Resources
Research Center**

June 24, 2008

ARIZONA SURFACE
MANAGEMENT RESPONSIBILITY



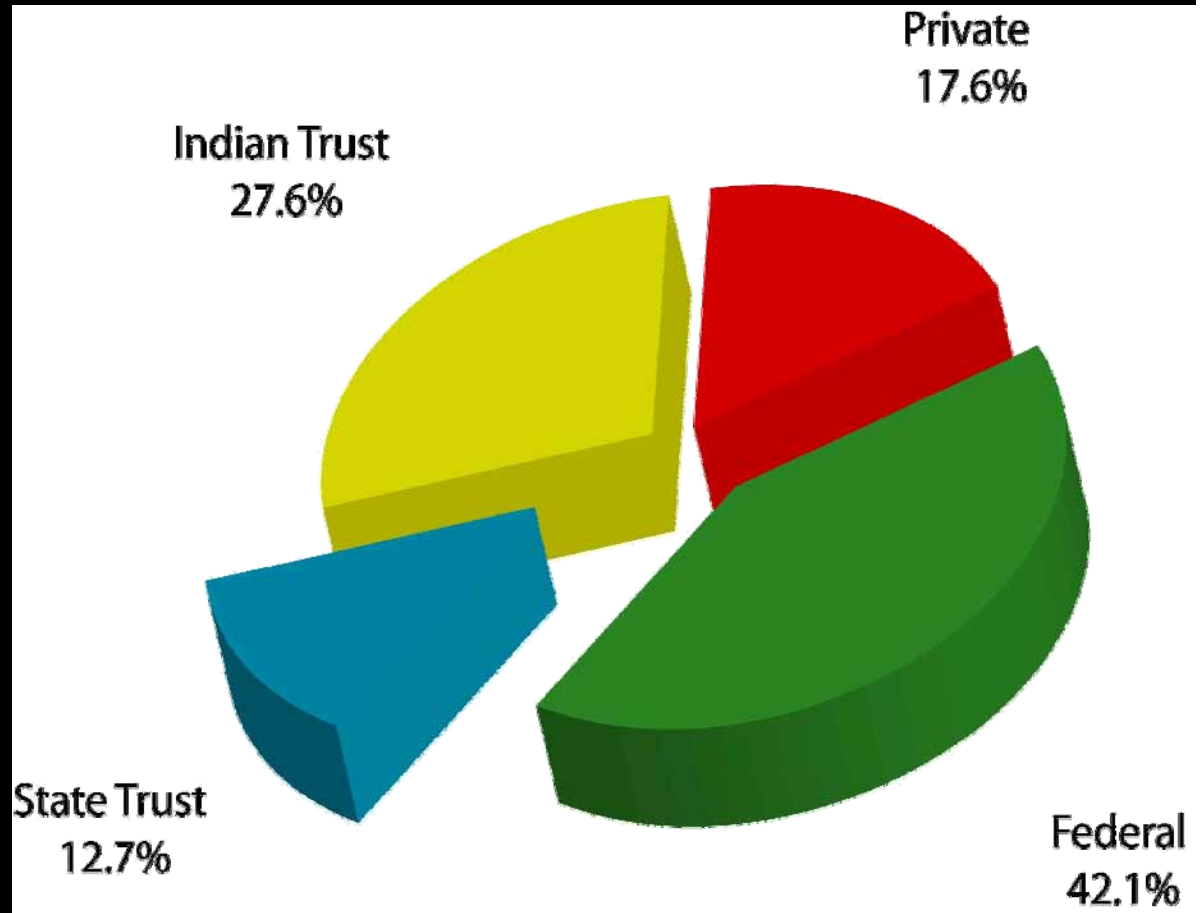
- Private
- State Trust Land
- National Parks
- Forest Service
- Wildlife Refuge
- State or Local Parks
- BLM
- Indian Reservations
- Military



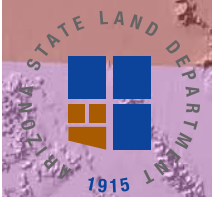
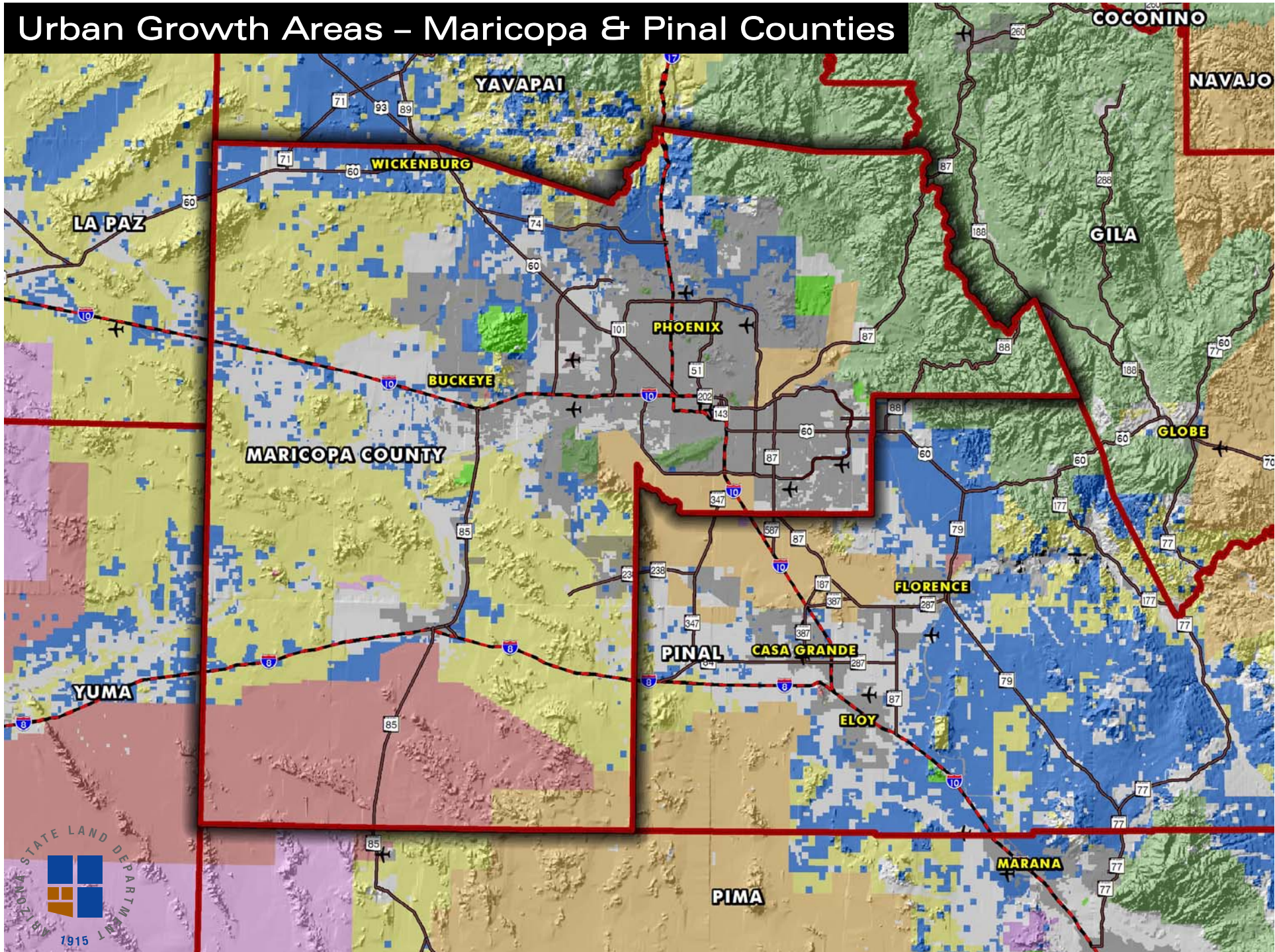
Land Ownership in Arizona

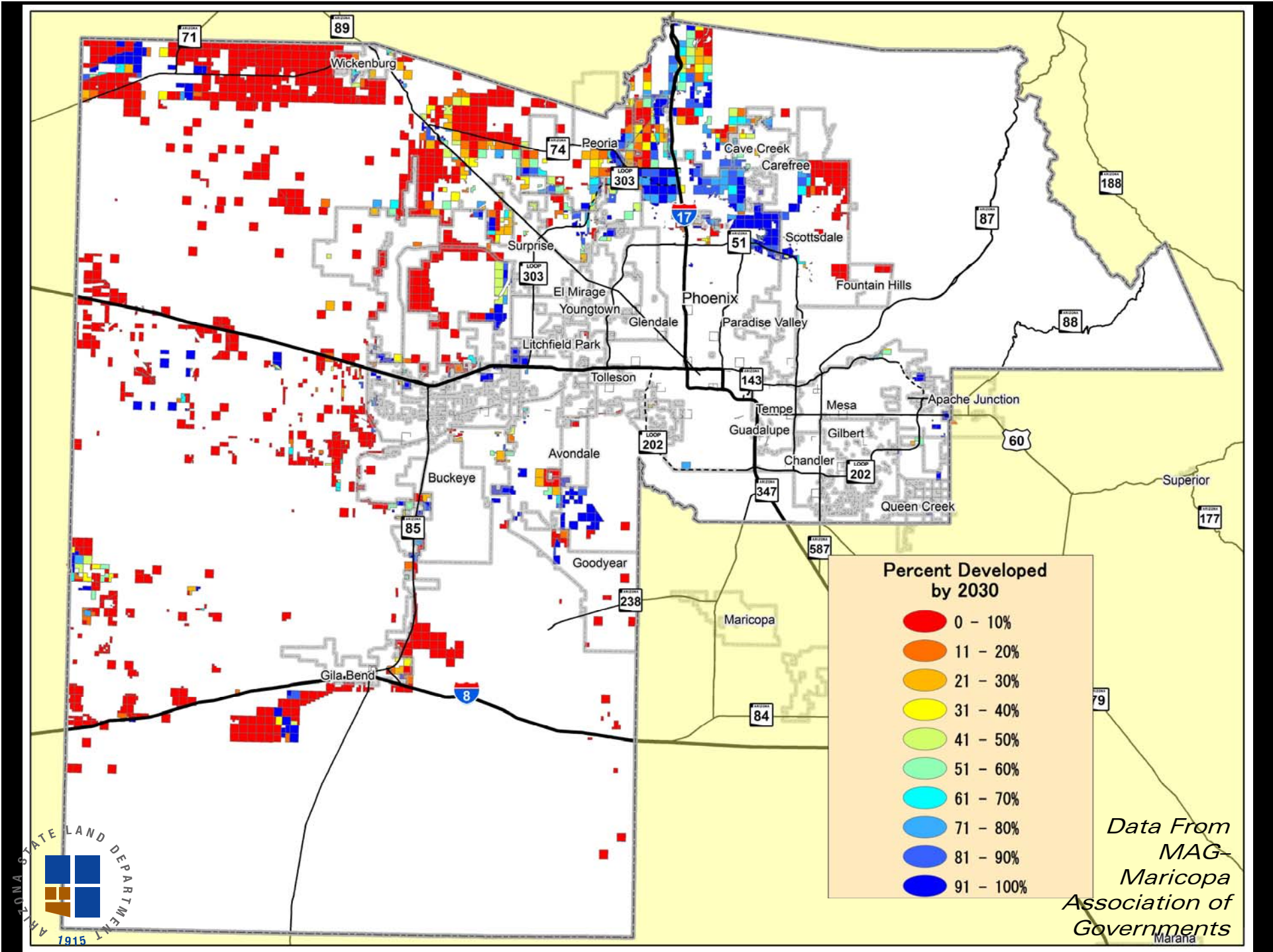
The State of Arizona contains an estimated 72,931,000 acres, or approximately 113,417 square miles, making it the fifth largest state in the United States. The surface land ownership in Arizona can be classified in four basic categories.

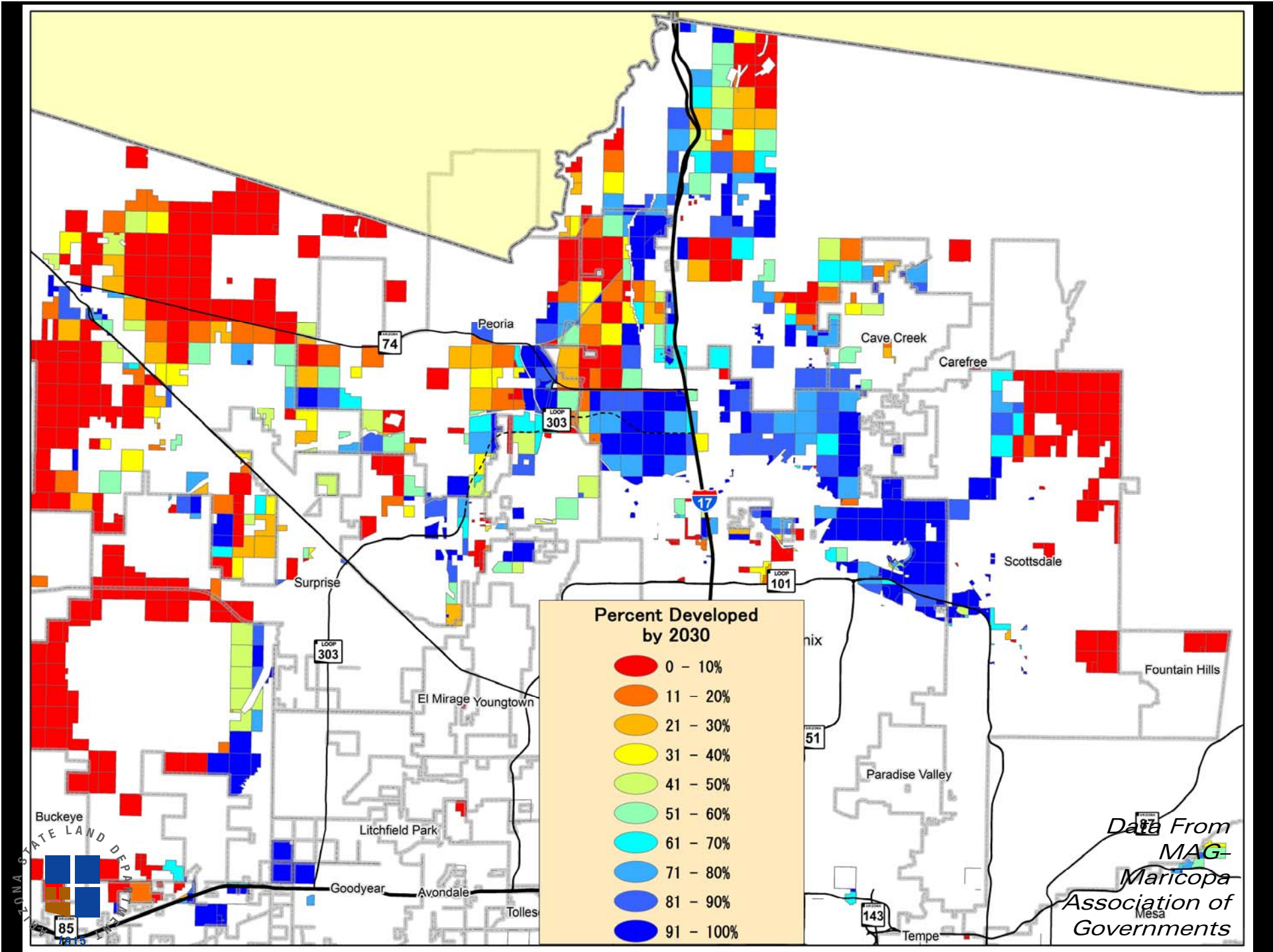
The percentages are estimates derived from digitized map data. The category called Private is overestimated due to the inclusion of small amounts of land owned by local, State, and Federal agencies.

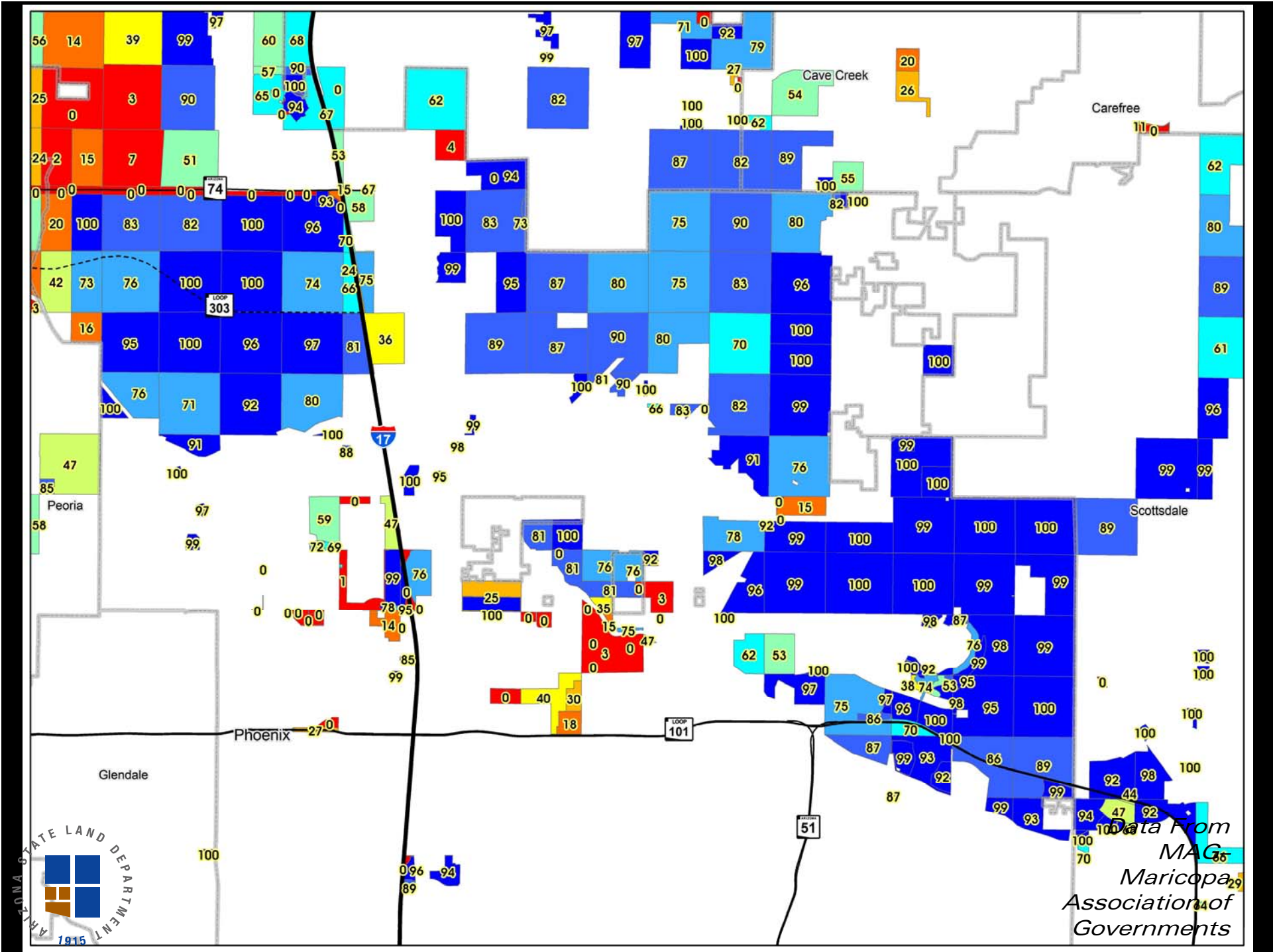


Urban Growth Areas – Maricopa & Pinal Counties



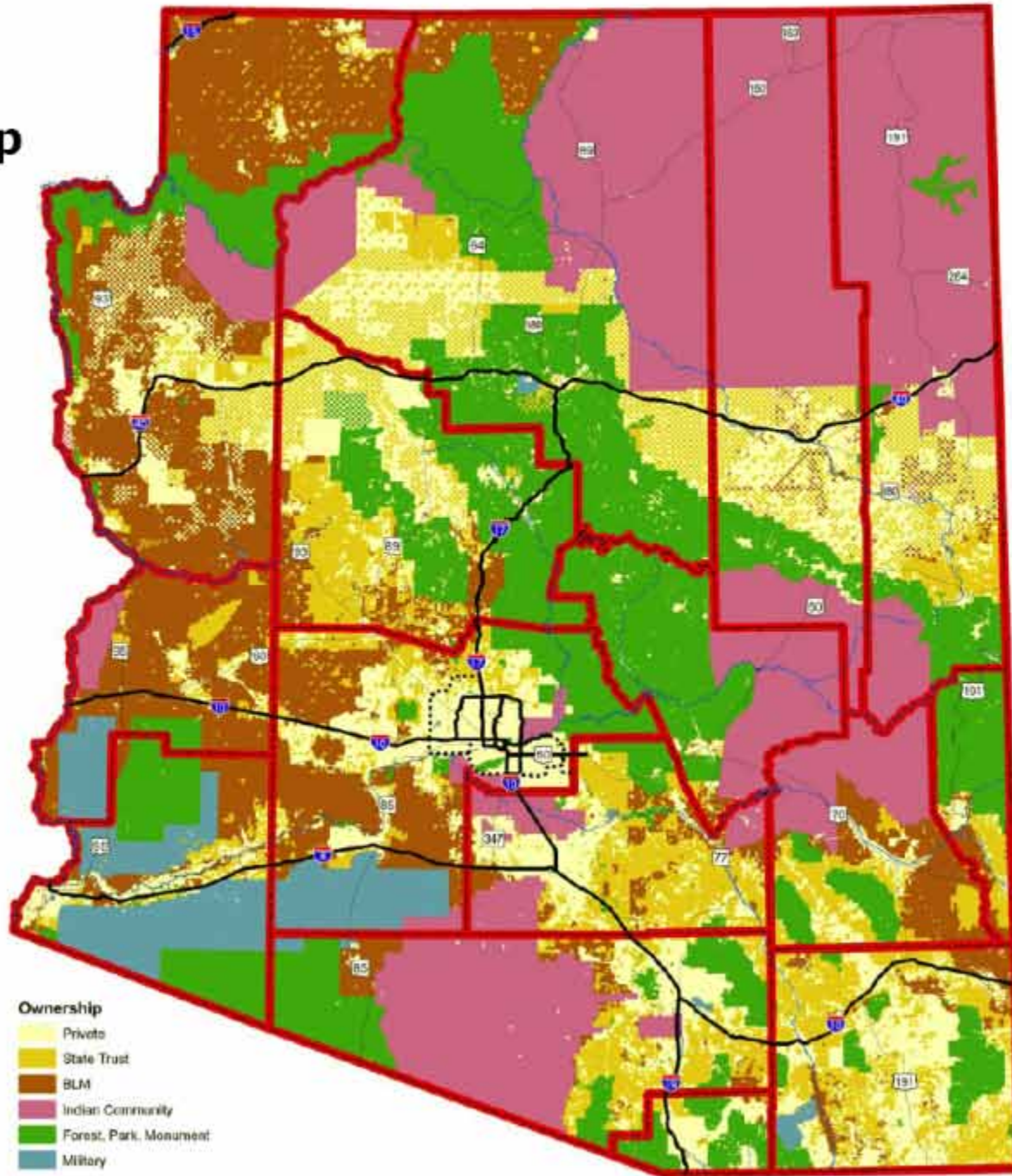






Data From
MAC
Maricopa
Association of
Governments

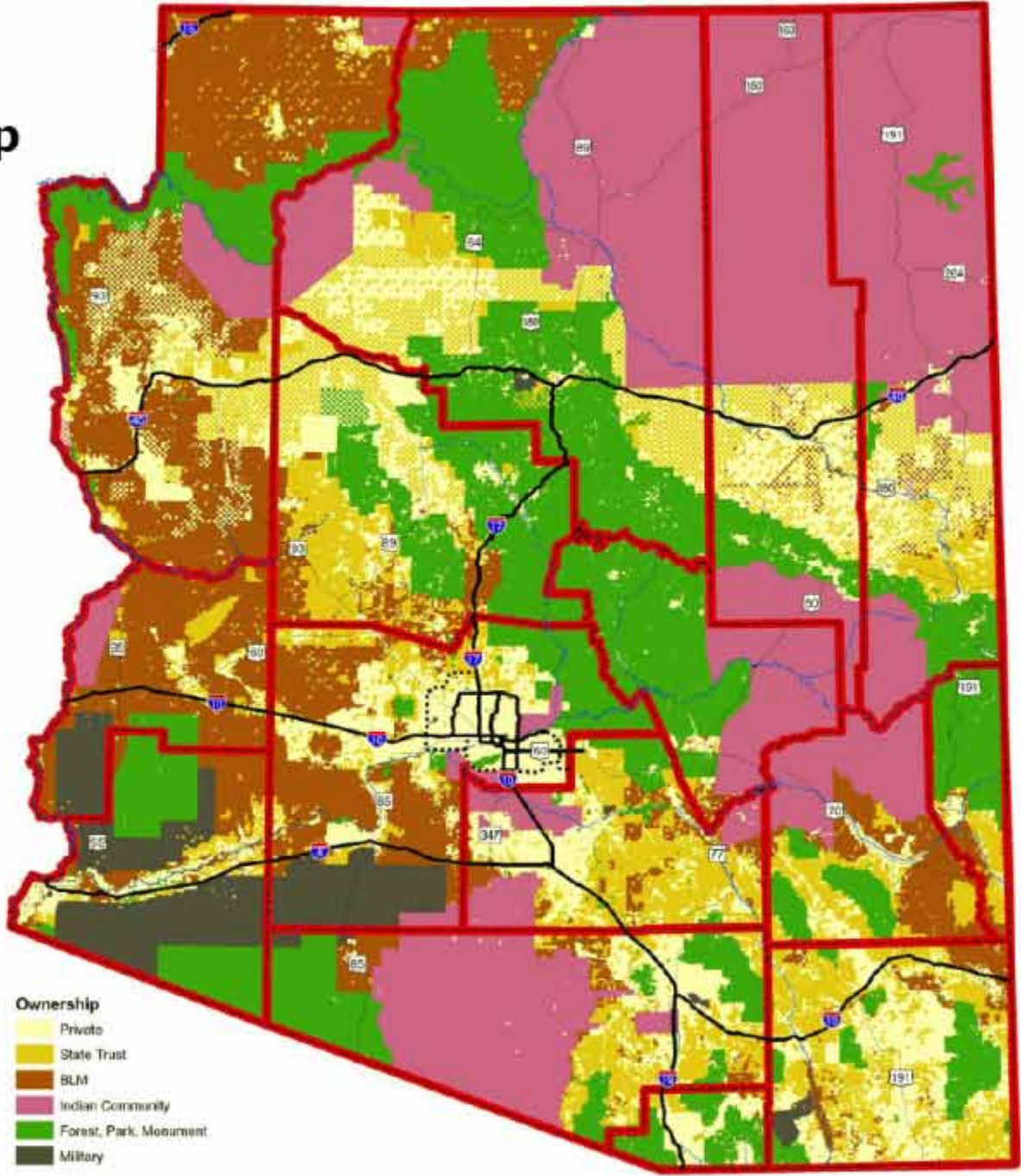
Arizona Land Ownership



*Slide Courtesy of
MAG –
Maricopa
Association of
Governments*

Arizona Land Ownership

**Subtract:
-Military**



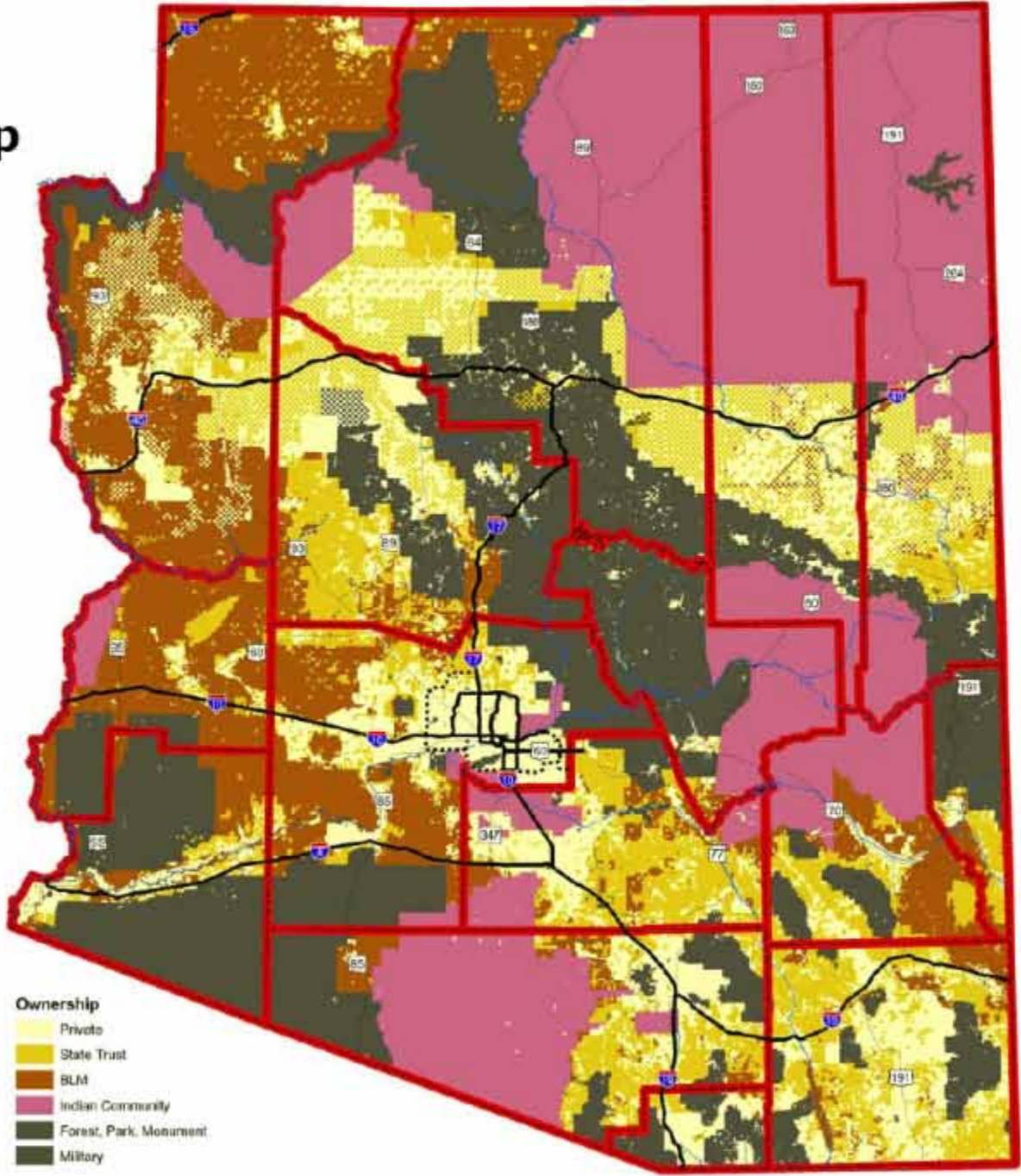
- Ownership**
- Private
 - State Trust
 - BLM
 - Indian Community
 - Forest, Park, Monument
 - Military



*Slide Courtesy of
MAG –
Maricopa
Association of
Governments*

Arizona Land Ownership

**Subtract:
-Military
-Forests**

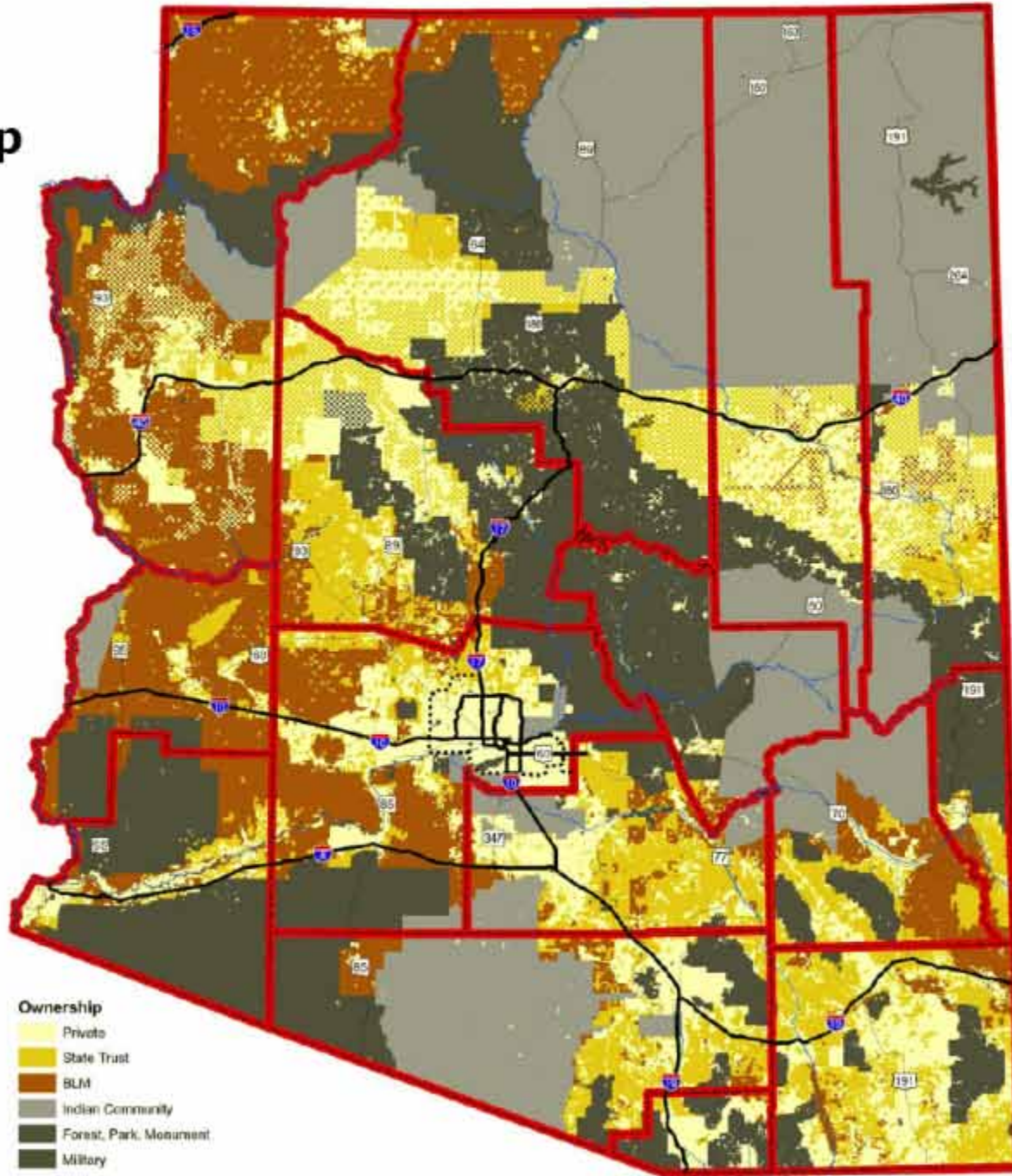


- Ownership**
- Private
 - State Trust
 - BLM
 - Indian Community
 - Forest, Park, Monument
 - Military



*Slide Courtesy of
MAG –
Maricopa
Association of
Governments*

Arizona Land Ownership

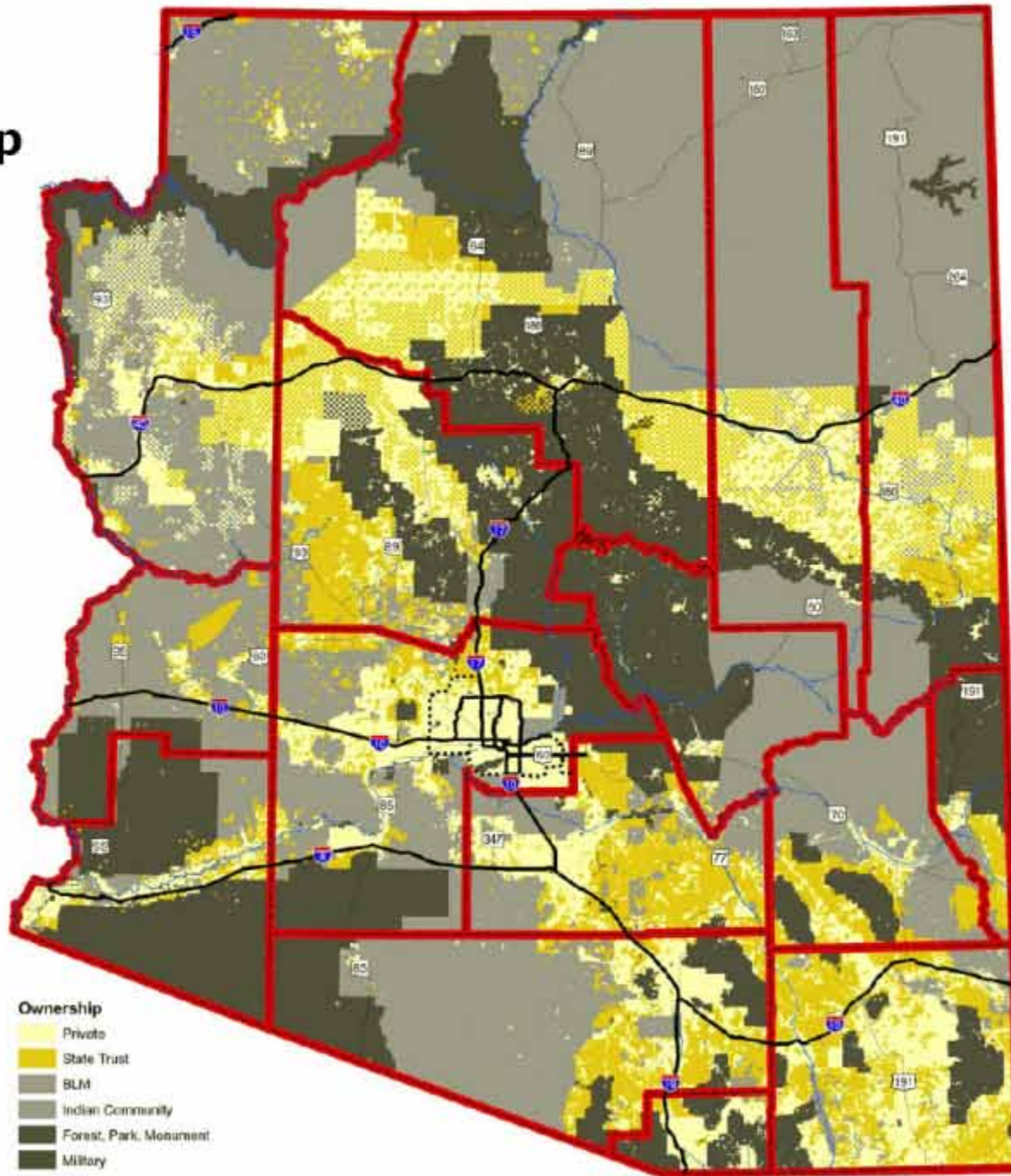


Subtract:
-Military
-Forests
-Indian
Lands



*Slide Courtesy of
MAG –
Maricopa
Association of
Governments*

Arizona Land Ownership



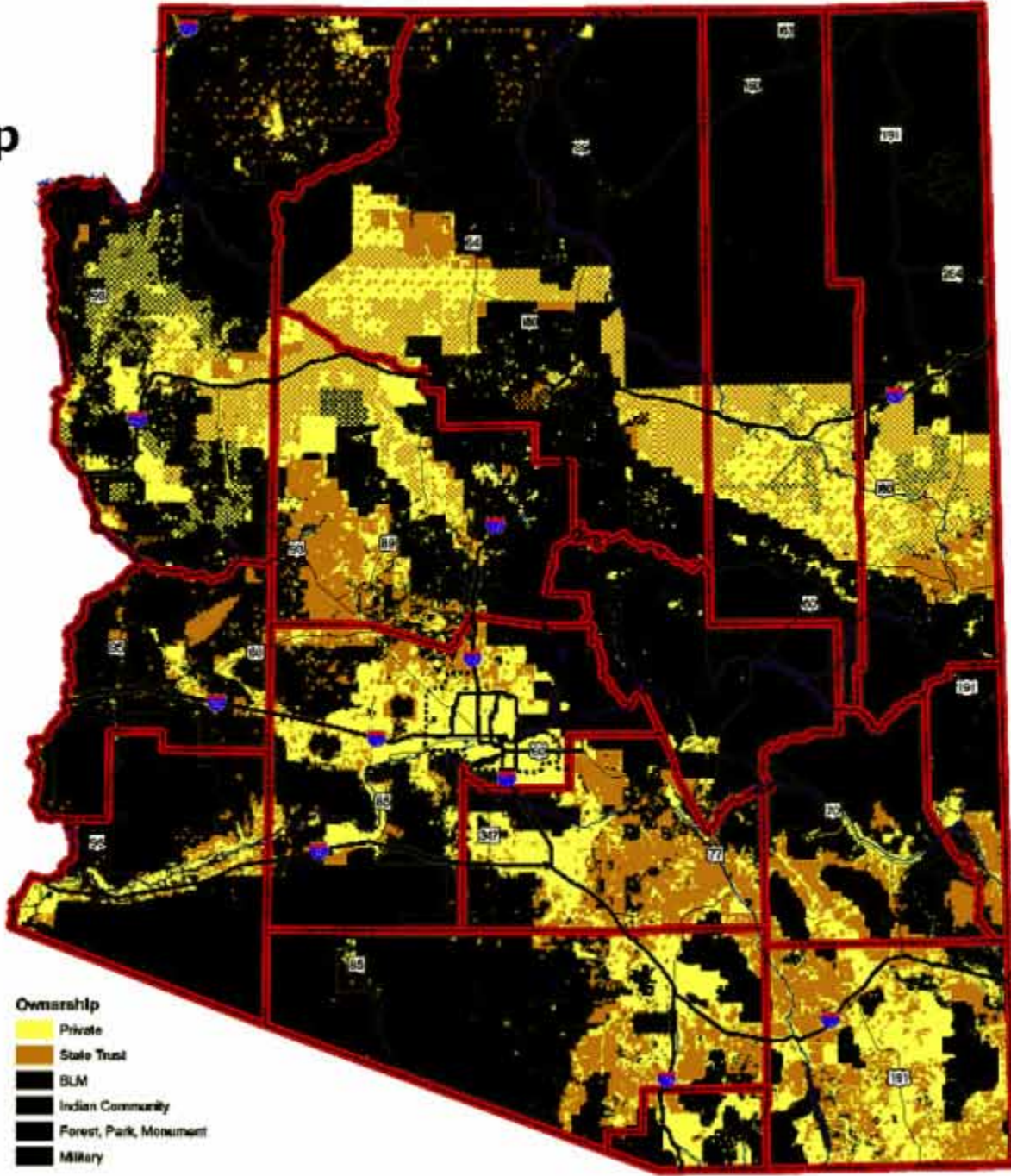
Subtract:
-Military
-Forests
-Indian
Lands
-BLM Lands

**Yellow
areas
represent
developable
land.**

*Slide Courtesy of
MAG –
Maricopa
Association of
Governments*

Arizona Land Ownership

Major Growth Areas Highlighted



- Ownership**
- Private
 - State Trust
 - BLM
 - Indian Community
 - Forest, Park, Monument
 - Military

*Slide Courtesy of
MAG –
Maricopa
Association of
Governments*





*Slide Courtesy of
MAG –
Maricopa
Association of
Governments*

Possible
Growth
Scenario
All Lands
2000-2050



2000



*Slide Courtesy of
MAG –
Maricopa
Association of
Governments*

Possible
Growth
Scenario
All Lands
2000-2050



2010



*Slide Courtesy of
MAG –
Maricopa
Association of
Governments*

Possible
Growth
Scenario
All Lands
2000-2050



2020



*Slide Courtesy of
MAG –
Maricopa
Association of
Governments*

Possible
Growth
Scenario
All Lands
2000-2050



2030



*Slide Courtesy of
MAG –
Maricopa
Association of
Governments*

Possible
Growth
Scenario
All Lands
2000-2050

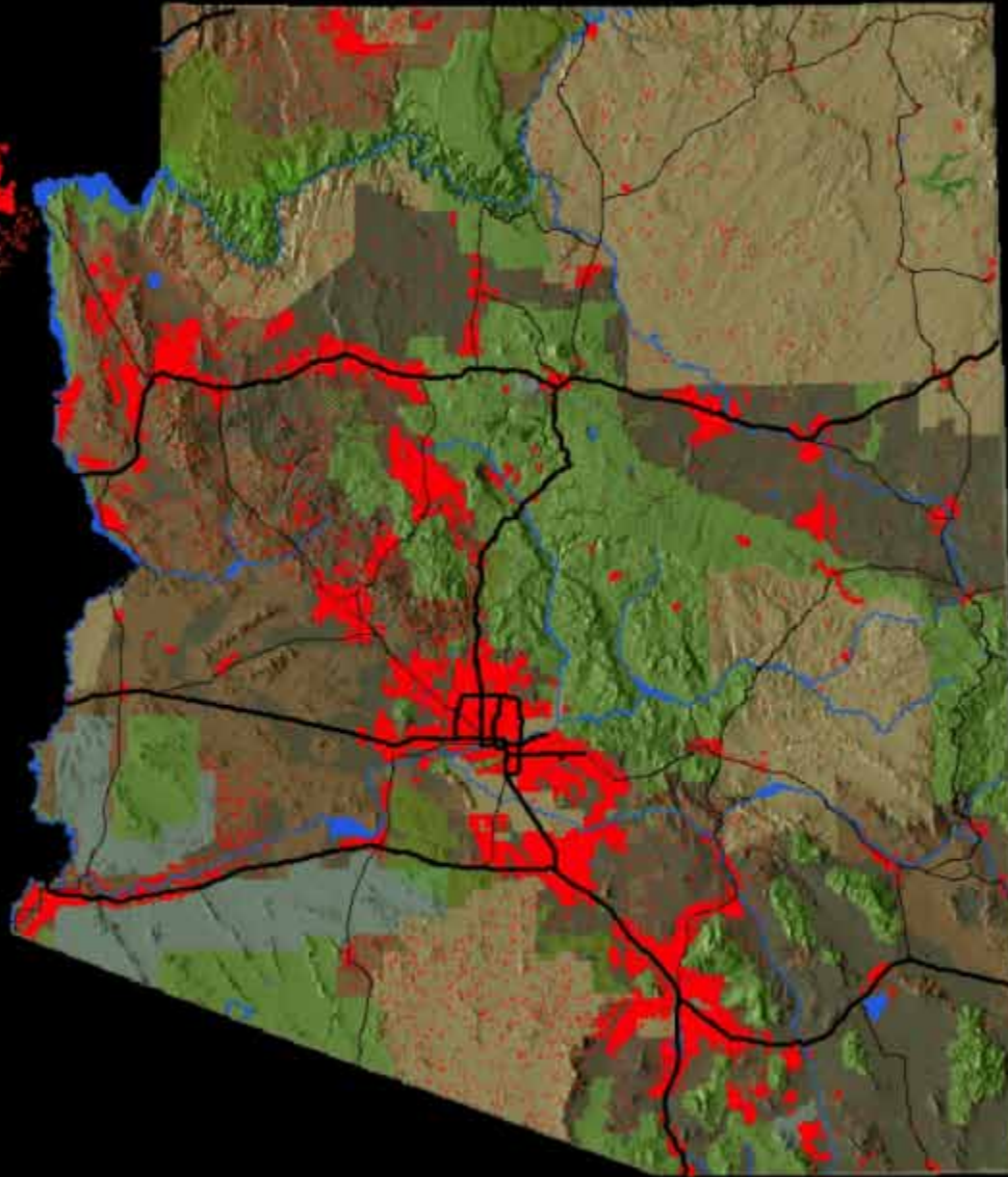


2040



*Slide Courtesy of
MAG –
Maricopa
Association of
Governments*

Possible
Growth
Scenario
All Lands
2000-2050



2050



*Slide Courtesy of
MAG –
Maricopa
Association of
Governments*

For Additional Information on
StateTrust Lands
www.land.state.az.us

Thank you to the Maricopa
Association of Governments for
slides in this presentation.

THE UNIVERSITY OF ARIZONA.
Water Resources Research Center
College of Agriculture and Life Sciences



The University of Arizona



The Importance of the Colorado River to Arizona's Future

June 24, 2008
Phoenix, Arizona

